



**UNILOCK®**  
DESIGNED TO CONNECT™

ARCHITECTURAL PAVEMENTS AND RETAINING WALLS





# BRINGING YOUR VISION TO LIFE

Designed and installed in some of the most prestigious commercial spaces in North America, Architects, Landscape Architects and Engineers trust Unilock to bring their architectural vision to life and to withstand the toughest rigor of a commercial environment.

LANDSCAPE ARCHITECT: Michael Van Valkenburgh Associates







## COLLEGE CAMPUS IN MASSACHUSETTS

Woven into the generous campus landscape fabric is a network of smaller, intimate gathering spaces designed for the social needs of contemporary undergraduate life. Within this context lies the central courtyard of the new college residences. Mediating significant site grade changes and programmatic challenges, this lively outdoor space focuses on fostering diversity and community engagement, while connecting the past and future of the college.

To achieve the desired paving pattern, two colors of 8" City Park Paver™ were used: Winter Marvel and Midnight Sky in the Umbriano® finish. This finish resembles natural granite with the proprietary ColorFusion™ technology and the built-in EasyClean™ help to ensure this space is easier to maintain. This unique patterning creates the intricate, modern and stimulating pixelated pattern.





## APPLICATIONS

# STREETSCAPES

Creating urban centers with visual appeal and style, while reflecting the character of the town or city, demands the right products to capture the spirit of the space. Our extensive range of exclusive textures, colors and sizes allow you to explore the design diversity required with products that will stand up to the application. High-traffic roads require heavy-duty paving and with Unilock, using the right unit paver can make a powerful impression.

### TOP LEFT

**PROJECT:** Yorkville Avenue. Toronto, ON

**DESIGN:** The Planning Partnership

**PRODUCT:** Promenade™ Plank Paver - Umbriano® custom colors

### TOP RIGHT

**PROJECT:** Broadway Avenue. Newport, RI

**DESIGN:** Beta Group

**PRODUCT:** Town Hall® and Copthorne® - custom colors











## APPLICATIONS

# COMMERCIAL RETAIL

In commercial environments, Unilock pavers and retaining walls offer a wide range of design solutions. Whether you are working with our standard product palette or taking advantage of our extensive custom capabilities, you will have the right products to bring your vision to life. Adding atmosphere, scale, flow and harmony, you will have the selection you need to meet your design objectives.

### TOP LEFT

**PROJECT:** Chicago Premium Outlets. Aurora, IL

**DESIGN:** Norris Design

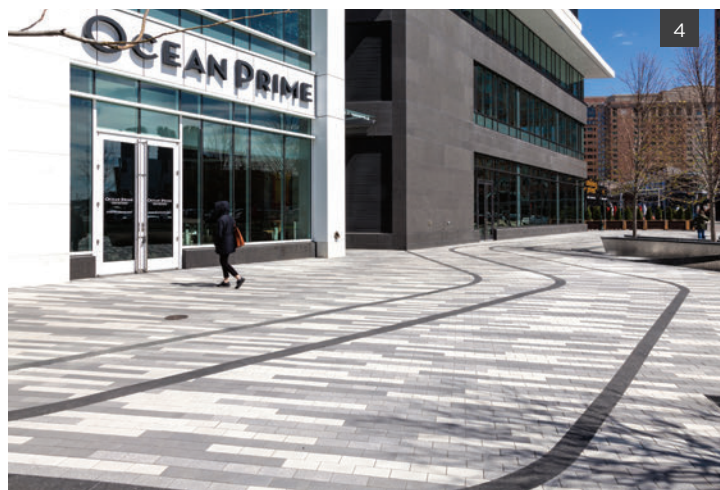
**PRODUCT:** Series 3000® / Promenade™ Plank Paver - custom colors

### TOP RIGHT

**PROJECT:** The Preserve Phase 1. Oakville, ON

**DESIGN:** NAK Design Strategies

**PRODUCT:** Artline™ - Umbriano® and Smooth Premier finish











## APPLICATIONS

# PARKS & RECREATION

Seamlessly complement the beauty of gardens, fountains and other natural or man-made design elements, with the confidence that the paving material you select will stand up to the rigor of its environment. Unilock products offer advanced surface technologies that deliver a variety of benefits including stain resistance and easy cleaning properties. This makes them an ideal choice for high-traffic pedestrian areas.

### TOP LEFT

**PROJECT:** Franklin D. Roosevelt State Park. Yorktown Heights, NY

**DESIGN:** Saratoga Associates

**PRODUCT:** Europaver® and Eco-Priora™ - custom colors

### TOP RIGHT

**PROJECT:** Niagara Falls State Park. Niagara Falls, NY

**DESIGN:** LA Group

**PRODUCT:** Umbriano®











## APPLICATIONS

# URBAN PLAZAS

For centuries, Europeans have been gathering in public squares for farmers markets, community events and entertainment. This tradition continues in modern day North America with citizens drawn to public spaces to relax or catch up with friends. The extensive collection of Unilock styles, colors and textures provide infinite design choices to reflect the surrounding environment and to bring a sense of community to any urban outdoor space.

### TOP LEFT

**PROJECT:** Public Square. Cleveland, OH  
**DESIGN:** James Corner Field Operations  
**PRODUCT:** Copthorne® - custom color

### TOP RIGHT

**PROJECT:** Polk Brothers Park. Chicago, IL  
**DESIGN:** James Corner Field Operations  
**PRODUCT:** Promenade™ Plank Paver - Series 3000®  
 finish custom color











## APPLICATIONS

# OFFICES

Successful commercial design incorporates elements which enhance a company's brand image and the building's architectural style. Linear patterns, color and texture are used to encourage flow and create stunning visual effects without compromising function. The wide range of Umbriano sizes and styles allow you to create just the right look and feel.

### TOP LEFT

**PROJECT:** 500 Totten Pond Road at CityPoint  
Waltham, MA  
**DESIGN:** CBA Landscape Architects, LLC  
**PRODUCT:** Umbriano®

### TOP RIGHT

**PROJECT:** 590 W Madison Pocket Park. Chicago, IL  
**DESIGN:** Wolff Landscape Architecture  
**PRODUCT:** Umbriano®











## APPLICATIONS

# MULTIFAMILY HOUSING

Vibrant and inviting outdoor spaces are essential in every multifamily development. Using a variety of textures, colors and sizes you can create spaces that are flexible, serving a full range of activities to encourage socialization yet offer solitude. Taking advantage of the site's exposure to sun, air and views, you can create a journey through the courtyard's social and private, open and secluded, active and passive spaces.

### TOP LEFT

**PROJECT:** East Side Bond. Pittsburgh, PA  
**DESIGN:** Design Collective Inc.  
**PRODUCT:** Umbriano®

### TOP RIGHT

**PROJECT:** 66 Water Street, Brooklyn, NY  
**DESIGN:** James Corner Field Operations  
**PRODUCT:** Copthorne® - custom colors











## APPLICATIONS

# ROOF DECKS

The opportunity to reclaim a functional space and turn it into an attractive destination has never been greater. Unilock offers a full line of architectural roof deck pavers with the same great finishes used for on-grade applications. This makes it easier than ever to create harmony between the building's outdoor space and the site paving.

### TOP LEFT

**PROJECT:** Fuse Cambridge. Cambridge, MA  
**DESIGN:** Halvorson Design Partnership, Inc.  
**PRODUCT:** 24" x 24" Smooth Premier Finish

### TOP RIGHT

**PROJECT:** Lowes Hotel. Chicago, IL  
**DESIGN:** Wolff Landscape Architecture  
**PRODUCT:** Umbriano®











## APPLICATIONS

# ACADEMIC & HEALTHCARE

The high-traffic demands of academic and healthcare applications require products that perform. Unilock EnduraColor™ and EnduraColor™ Plus Architectural Finishes give you the confidence that you are choosing beauty that will stand the test of time. These surfaces offer the most extensive selection of colors, textures and sizes, enabling you to bring to life your unique vision for the space.

### TOP LEFT

**PROJECT:** Case Reserve University. Cleveland, OH  
**DESIGN:** Behnke Landscape Architecture  
**PRODUCT:** Eco-Priora™ - Umbriano® finish

### TOP RIGHT

**PROJECT:** Western Illinois University. Moline, IL  
**DESIGN:** site  
**PRODUCT:** Promenade™ Plank Paver - Umbriano® finish







23



24





## APPLICATIONS

# GOLF COURSES & RESORTS

Creating a relaxing retreat, ensuring harmony with the natural surrounding, conveying the excitement and energy of the city or evoking the resort's world-class brand image, are all statements of your design and Unilock has the right product for each theme. Stunning architectural finishes and color options provide you with the opportunity to design what hasn't been designed before.

### TOP LEFT

**PROJECT:** Richmond County Country Club. Staten Island, NY

**DESIGN:** Perfetto Contracting Co. Inc.

**PRODUCT:** Umbriano®

### TOP RIGHT

**PROJECT:** Newport Yachting Center. Newport, RI

**DESIGN:** Birchwood Design Group

**PRODUCT:** Artline™ - Umbriano® Finish











## APPLICATIONS

# HEAVY-DUTY & PARKING LOTS

For maximum performance where load capacity, truck and trailer loading or everyday vehicular traffic are factors, Unilock can provide you with the right products. Heavy-duty pavers are available in traditional and permeable versions, in standard finishes as well as custom color and finish options to ensure that your design vision is achieved.

### TOP LEFT

**PROJECT:** Robert C Austin Operations Centre. Halton Hills, ON  
**DESIGN:** Town of Halton Hills/Valdor Engineering Inc.  
**PRODUCT:** Eco-Priora™ - Il Campo® finish

### TOP RIGHT

**PROJECT:** Port of Rochester. Rochester, NY  
**DESIGN:** Edgewater Resources / LaBella Associates  
**PRODUCT:** Eco-Optiloc™ - custom colors











## APPLICATIONS

# PERMEABLE

Environmentally conscious product choices are more in demand than ever. Over the last 25 years, Unilock has developed an extensive collection of innovative products for environmental concerns such as stormwater management. Now rainwater harvesting and water quality concerns can be alleviated by designing in style with beautiful colors and textures, while promoting sustainability.

### TOP LEFT

**PROJECT:** Casa Queretaro. Chicago, IL  
**DESIGN:** site  
**PRODUCT:** Eco-Line® - Il Campo® finish

### TOP RIGHT

**PROJECT:** Francis Street. Providence, RI  
**DESIGN:** Hali Beckman, Ltd.  
**PRODUCT:** Town Hall®











## APPLICATIONS

# SEGMENTAL RETAINING WALLS

Unilock has the right wall for every design scenario; from hand-installed to machine-set, from 2 feet to 40 feet high, we have products to meet the demands of your design. Speak with your Unilock Representative to explore the possibilities.

### TOP LEFT

**PROJECT:** Bishops Place. West Hartford, CT  
**DESIGN:** CR3 LLP  
**PRODUCT:** Concord Wall™/Pisa2™

### TOP RIGHT

**PROJECT:** Roxbury Latin School. Roxbury MA  
**DESIGN:** Stantec Boston  
**PRODUCT:** SienaStone®









# UNILOCK TECHNOLOGIES

## PROPRIETARY UNILOCK TECHNOLOGIES

### EXTRA STRENGTH

#### Ultima™ Concrete Technology

A proprietary manufacturing process that creates pavers and walls with up to four times the strength of poured concrete.

### THE LOOK OF GRANITE

#### ColorFusion™ Technology

A proprietary technology that disperses color randomly to achieve the look of natural granite.

### NATURAL STONE TEXTURE

#### Reala™ Technology

Ultra realistic textures are cast from natural stone, brick and historic cobblestones.

### STAIN RESISTANCE

#### EasyClean™ Stain Resistance

An integral surface protection that allows for easier cleanup of spills when they happen, before a stain can develop.

*There are two Clean Factors (CF\*) to choose from:*

CLEAN FACTORS (CF)	CF 90	CF 100
Pavers are pre-sealed at the factory	*	*
Enhanced resistance to weathering	*	*
Reduced dirt absorption	*	**
Stains from leaves, coffee, ketchup, mustard, wine and BBQ oils are easier to remove	*	**

Look for EasyClean in Umbriano® **CF 90**, Senzo™ **CF 100**, Arcana **CF 100** and Soreno **CF 100**.



# PAVER CONSTRUCTION

---



*Brussels Block® - Tumbled Finish*

## GOOD STANDARD THRU-MIX

This is how the first pavers were manufactured. The product mix of large and small aggregates is consistent, from top to bottom, with color mixed throughout. The Unilock® Classic pavers we manufacture exceed all ASTM standards for quality and strength.

### ENDURING COLOR

Concentrated color and special wear-resistant materials

### UNITED WITH

### STRENGTH

Coarser foundation that gives the stone its strength



*Profile View*

## BETTER FACEMIX ENDURACOLOR™

Facemix products are manufactured in a two-step process which combines a base of coarser aggregates for a stronger foundation, with concentrated color and wear-resistant finer aggregates on top. Facemix products are highly resistant to fading because the top layer prevents large, lighter color aggregates from showing through. This is the manufacturing process for Unilock EnduraColor products.



## BEST ENDURACOLOR™ PLUS ARCHITECTURAL FINISHES

**Only Unilock offers EnduraColor™ Plus Architectural Finishes**, a collection of products that deliver long-lasting beauty through a proprietary blend of exclusive and superior ingredients. A complex blend of granite and quartz, some of nature's highest performing minerals, are combined to create ultra-realistic surface textures and unique style options that are exceptionally durable. Proprietary manufacturing technologies like Ultima™, EasyClean™, ColorFusion™ and Realta™ give these products added benefits in terms of beauty and function.

**A NEW STANDARD FOR EVERLASTING BEAUTY.**

## QUALITY ASSURED

Unilock manufacturing teams have an unrelenting commitment to shipping only top quality products. Our world-class production facilities are renowned for their safety and cleanliness and are staffed with the most experienced production quality control staff in the industry. Our continual investment in the most technologically advanced equipment ensures we're able to provide the best in product quality, consistency and design.

- | Tested from raw materials to finished product
- | Tested hourly for product density
- | Designed to meet all dimensional tolerances
- | Above industry quality standards (ASTM & CSA)
- | Durable and slip-resistant
- | Made with colorfast pigments
- | Resistant to salt erosion and chlorine
- | Designed to tolerate oil or gas spills



# UNILOCK CUSTOMIZATION

Unilock® allows you to **customize products** to suit your project. Our **vast array** of sizes, edges, finish and color options make it easy to achieve your design vision. Speak with your Unilock Representative about custom options available in your market.





# SIZE OPTIONS

## SLAB SIZE OPTIONS

23½ x 23½ x 2 (60 x 60cm) T: 5cm	23⅜ x 23⅜" (60.6 x 60.6cm) T: 5cm	17⅞ x 23⅞" (45.3 x 60.6cm) T: 5cm	11⅛ x 23⅜" (30.1 x 60.6cm) T: 5cm	11⅙ x 23½ (30 x 60cm) T: 5cm

## LARGE FORMAT PAVER SIZE OPTIONS

36 x 36" (90 x 90cm) T: 10cm	18 x 36" (45 x 90cm) T: 10cm	12 x 36" (30 x 90cm) T: 7 or 10cm	24 x 24" (60 x 60cm) T: 5, 7 or 10cm	16 x 24" (40 x 60cm) T: 10cm
12 x 24" (30 x 60cm) T: 5, 7, 10 or 15cm	8 x 24" (20 x 60cm) T: 10 or 15cm	6 x 24" (15 x 60cm) T: 7 or 15cm	16 x 16" (40 x 40cm) T: 7, 8 or 10cm	12 x 12" (30 x 30cm) T: 7, 8 or 10cm

## PAVER SIZE OPTIONS

8 x 16" (20 x 40cm) T: 7 or 10cm	4 x 16" (10 x 40cm) T: 10cm	6 x 12" (15 x 30cm) T: 7, 8 or 10cm	4 x 12" (10 x 30cm) T: 7, 8 or 10cm	3 x 12" (7.5 x 30cm) T: 10cm	8 x 8" (20 x 20cm) T: 7, 8 or 10cm	8 x 8" (20 x 20cm) T: 7cm
6 x 8" (15 x 20cm) T: 7cm	4 x 8" (10 x 20cm) T: 6, 7 or 8cm	6 x 6" (15 x 15cm) T: 7 or 8cm	3 x 6" (7.5 x 15cm) T: 10cm	4 x 4" (10 x 10cm) T: 7cm	10¼ x 10¼" (26 x 26cm) T: 8cm	6x12x16¼" (15x30x42.4cm) T: 7 or 8cm

## PERMEABLE SIZE OPTIONS

8 x 8" (20 x 20cm) T: 8cm	3 x 12" (7.5 x 30cm) T: 10cm	10¼ x 10¼" (26 x 26cm) T: 8cm	10 x 10" (24 x 24cm) T: 8cm	5 x 10" (12 x 24cm) T: 8cm	5 x 5" (12 x 12cm) T: 8cm

Not all shapes and sizes are available in all regions, or in all finish or edge options (not shown). Consult your Unilock Representative for more information. All measurements are nominal. T = height / thickness of the slab or paver

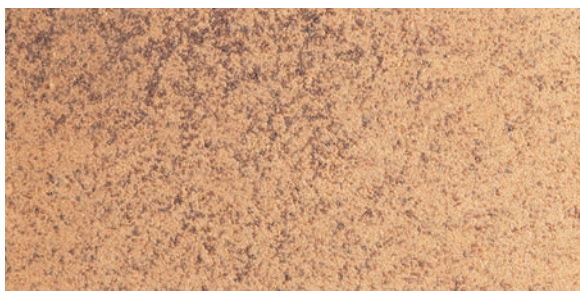


## FINISH OPTIONS

---

ENDURACOLOR **PLUS** ARCHITECTURAL FINISHES

---



UMBRIANO® Mottled Finish  
with ColorFusion™ and EasyClean™



SENZO® Matte Finish  
with EasyClean™



SERIES 3000® Exposed Aggregate Finish



REALA™ Finish  
with Ultima™ (Town Hall shown)

ENDURACOLOR™

---



IL CAMPO® Brushed Finish



RIVEN PREMIER Finish



SMOOTH PREMIER Finish

---

When texture is a primary design consideration, start here. Unilock offers the traditional surface finish as well as very unique and durable mottled, matte, exposed aggregate, brushed, smooth and riven finishes. To ensure your project delivers on durability and long-lasting color, insist on EnduraColor.



## COLOR OPTIONS

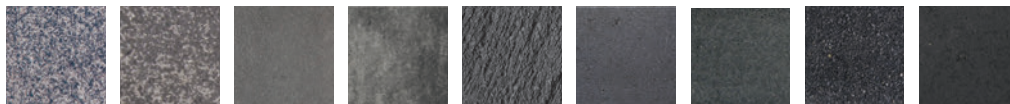
THIS PALETTE IS YOURS TO DISCOVER.



COOL GREY HUES



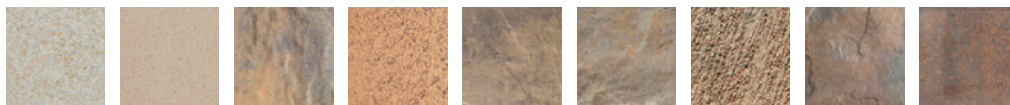
WARM GREY HUES



BLACK HUES



COOL COLOR HUES



WARM COLOR HUES



RED COLOR HUES



BROWN COLOR HUES

Your design is a product of your vision. Sometimes that means creating a unique color to bring that vision to life. As minimum custom production quantities apply, please contact your local Unilock Representative for more information.

Unilock stocks an extensive range of products in a wide variety of colors; check your regional Product Resource Guide for locally stocked product and color options.



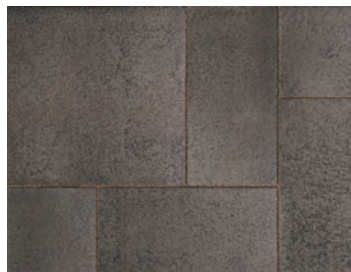


Random dispersion of color and granite particles create the beauty of Umbriano's unique mottled surface, resembling natural granite in this dramatic, large-scale paving stone. Ideal selection for high traffic areas such as commercial plazas and offices.

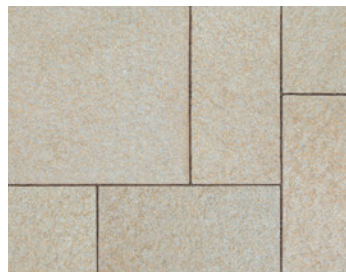
## COLORS (Consult your regional Product Data Resource Guide to find locally stocked colors)



AUTUMN SUNSET (SRI 32)



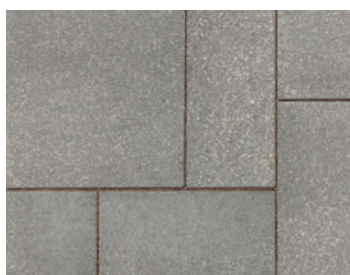
MIDNIGHT SKY



SUMMER WHEAT (SRI 48)



WINTER MARVEL (SRI 38)

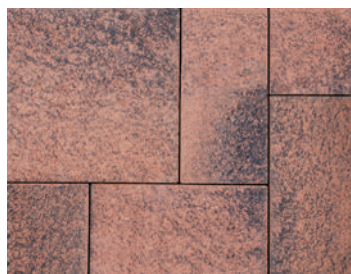


FRENCH GREY  
available in select markets - Random Bundle

## SPECIAL ORDER COLORS\*



GRENADA WHITE



SUMMER ROSE

### EASYCLEAN™ STAIN RESISTANCE - CF® 90

An integral surface protection that allows for easier cleanup of spills when they happen, before a stain can develop.

### COLORFUSION™ TECHNOLOGY

A proprietary technology that disperses color randomly to achieve the look of natural granite.

## PRODUCT SPECIFICATIONS



24 x 24 x 2 3/4"  
(60 x 60 x 7cm)



12 x 24 x 2 3/4"  
(30 x 60 x 7cm)



16 x 16 x 2 3/4"  
(40 x 40 x 7cm)



8 x 16 x 2 3/4"  
(20 x 40 x 7cm)



8 x 8 x 2 3/4"  
(20 x 20 x 7cm)

### RANDOM BUNDLE (available in select markets)



21 x 14 x 2 3/8"  
54 x 36 x 6cm



14 x 14 x 2 3/8"  
36 x 36 x 6cm



7 x 14 x 2 3/8"  
18 x 236 x 6cm



Design award  
winner 2011

Verify locally stocked sizes and colors with your Unilock Representative.



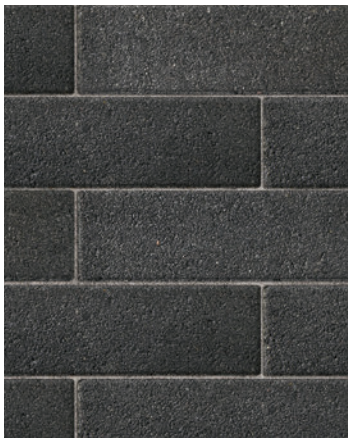





# PROMENADE™ PLANK PAVER

Clean, sleek lines are essential to any modern design. Choose the size, finish and color from Unilock’s Promenade Plank Paver series for long narrow paving ‘planks’ to create a dynamic linear aesthetic to complement any design.


## COLORS (Consult your regional Product Data Resource Guide to find locally stocked colors)




BLACK GRANITE  
Series 3000 Finish



GRANITE BLEND  
Il Campo Finish

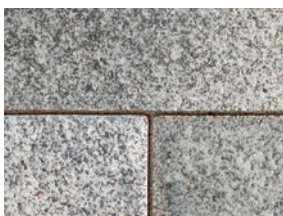


OPAL BLEND  
Smooth Premier Finish

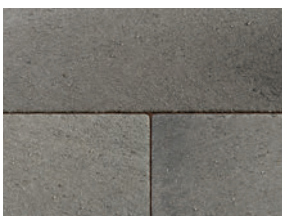


STEEL GREY BLEND  
Smooth Premier Finish

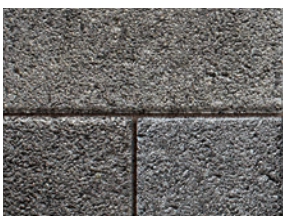
## CUSTOM FINISH OPTIONS



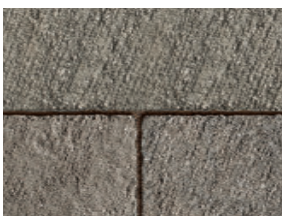
UMBRIANO®  
Mottled Finish



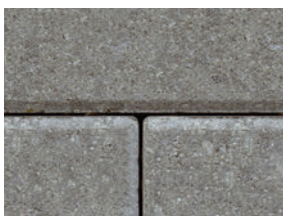
SENZO™  
Matte Finish



SERIES 3000®  
Exposed Aggregate Finish



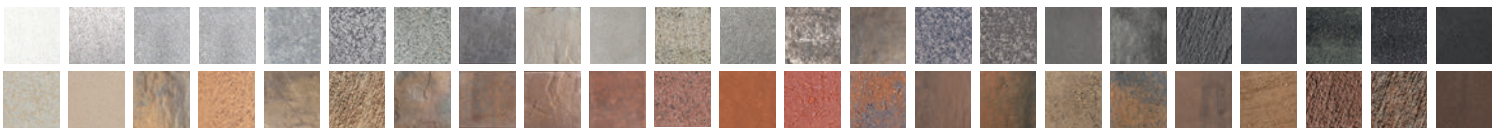
IL CAMPO®  
Brushed Finish




SMOOTH/PREMIER  
Finish

## CUSTOM COLOR OPTIONS\*


Ask your Unilock Representative about locally stocked colors.




## PRODUCT SPECIFICATIONS




8 x 24 x 4" or 6"  
(20 x 60 x 10 or 15cm)




6 x 24 x 2 ¾" or 6"  
(15 x 60 x 7cm or 15cm)



4 x 16 x 4"  
(10 x 40 x 10cm)



4 x 12 x 4"  
(10 x 30 x 10cm)



3 x 12 x 4"  
(7 x 30 x 10cm)

*Promenade can be manufactured in a variety of custom colors and textures. Minimum quantities will apply. Please contact your Unilock Representative for more details.*

 Permeable version 3 x 12", Eco-Promenade™ is available by special order. See page 57.



JOHN J. SBREGA  
HEALTH & SCIENCE BUILDING





# SERIES 3000®

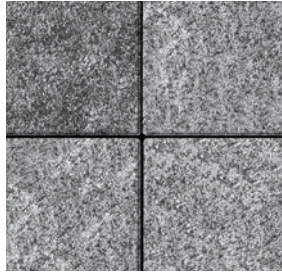
**ENDURACOLOR™**  
PLUS ARCHITECTURAL FINISHES

A sophisticated unit paver finish with a high-performance surface, made from a combination of granite and quartz aggregates, Series 3000 is the ideal component to bring your architectural vision to life.

## COLORS (Consult your regional Product Data Resource Guide to find locally stocked colors)



BLACK GRANITE



CRYSTALLINE BASALT



CRYSTAL ROSE



GOLDEN TAN



ICE GREY (SRI 38)



MINERAL ICE GREY  
(SRI 33)



MOCHA BROWN



MOUNTAIN MIST (SRI 29)

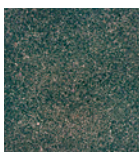


ONYX BLACK



PEPPERED GRANITE

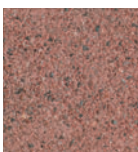
## SPECIAL ORDER COLORS\*



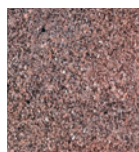
BARITONE BLACK



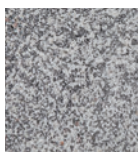
BUFF



CABERNET RED



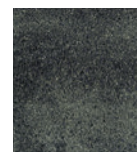
CORAL GEM



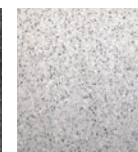
GLACIER



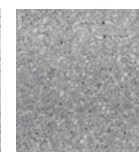
GREY



LAURENTIAN  
GREEN



PEPPERED SAND  
(SRI 60)



PLATINUM GREY  
(SRI 29)



STARLIGHT

## PRODUCT SPECIFICATIONS



24 x 24 x 2"  
(60 x 60 x 5cm)  
SPECIAL ORDER



24 x 24 x 2 3/4"  
(60 x 60 x 7cm)  
SPECIAL ORDER



12 x 24 x 2 3/4"  
(30 x 60 x 7cm)  
SPECIAL ORDER



6 x 24 x 2 3/4"  
(15 x 60 x 7cm)  
SPECIAL ORDER



12 x 12 x 2 3/4"  
(30 x 30 x 7cm)



6 x 12 x 2 3/4"  
(15 x 30 x 7cm)



6 x 6 x 2 3/4"  
(15 x 15 x 7cm)



4 x 8 x 2 3/4"  
(10 x 20 x 7cm)

*Custom colors are available by special order, minimum quantities will apply. \* Please contact your Unilock Representative for more details.*







Senzo outperforms when it comes to surface wear and color retention, allowing you to design dynamic and vibrant spaces. Ideal for high traffic areas such as commercial plazas and urban streetscapes.

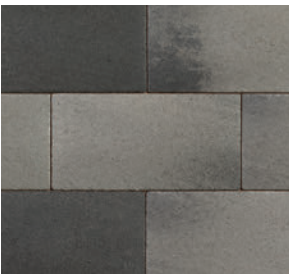


COLORS (Consult your regional Product Data Resource Guide for stocked colors)

SPECIAL ORDER COLORS\*



CASTANO



NUVOLA



CREMA (SRI 49)



BIANCO



GRIGIO



MEDITERANO  
(SRI 38)

PRODUCT SPECIFICATIONS



16 x 16 x 2 3/4"  
(40 x 40 x 7cm)



8 x 16 x 2 3/4"  
(20 x 40 x 7cm)



8 x 8 x 2 3/4"  
(20 x 20 x 7cm)

**EASYSOIL™ STAIN RESISTANCE- CF® 100**  
An integral surface protection that allows for easier cleanup of spills when they happen, before a stain can develop.

Custom colors are available by special order, minimum quantities will apply. Not all colors are stocked in all regions. \* Please contact your Unilock Representative for more details.



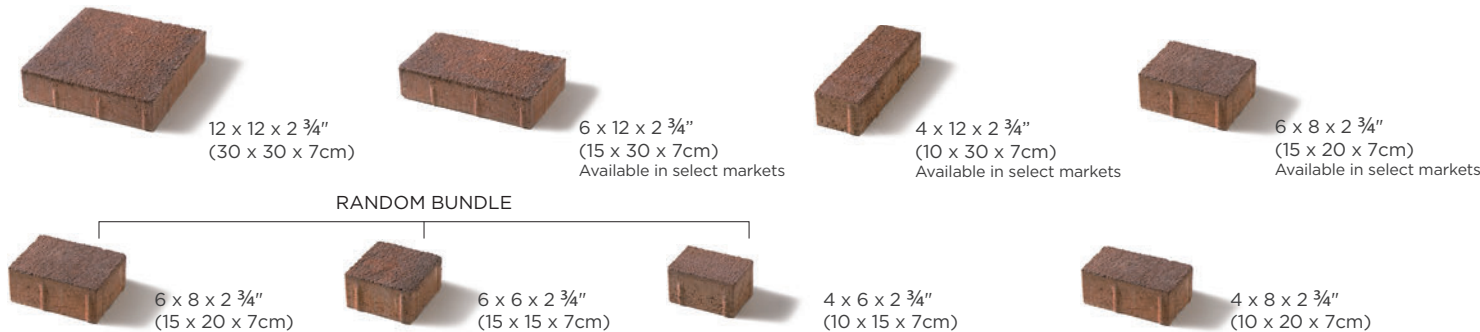
Il Campo features irregular etched lines across each unit paver for a richly detailed look that's striking and inviting. Il Campo gives you the ability to create both geometric and random patterns with a large range of available sizes.



**COLORS** (Consult your regional Product Data Resource Guide to find locally stocked colors)



**PRODUCT SPECIFICATIONS**



Verify locally stocked sizes and colors with your Unilock Representative .

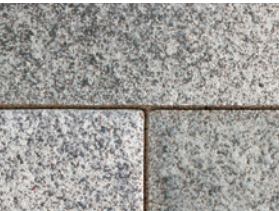


# CITY PARK PAVER™

City Park Paver is a traditional urban paver shape available in many custom finishes and colors. This paver shape is a class-act no matter what the application, residential, park or plaza.



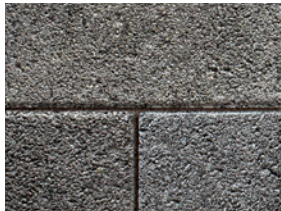
## CUSTOM FINISH OPTIONS



UMBRIANO®  
Mottled Finish



SENZO™  
Matte Finish



SERIES 3000®  
Exposed Aggregate Finish



IL CAMPO®  
Brushed Finish



SMOOTH/PREMIER  
Finish

## CUSTOM COLOR OPTIONS\*



## PRODUCT SPECIFICATIONS



8 x 8 x 2 3/4"  
(20 x 20 x 7cm)



Permeable 8cm version is available by special order. Not available in Senzo. See page 58

*City Park Paver can be manufactured in a variety of custom colors and textures. Minimum quantities will apply. \* Please contact your Unilock Representative for more details.*



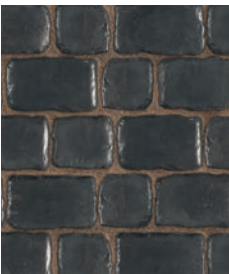
# COURTSTONE®



Bring a sense of old-world Europe to your design with Courtstone. The unsurpassed strength and realistic texture create an everlasting product which is ideal for vehicular paving and accents.



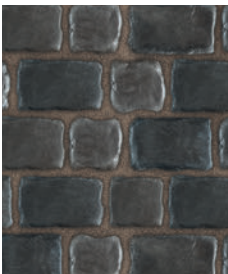
## COLORS



BASALT



BELGIAN BLUE



BASALT /  
BELGIAN BLUE  
BLENDED ON SITE



DAWN MIST

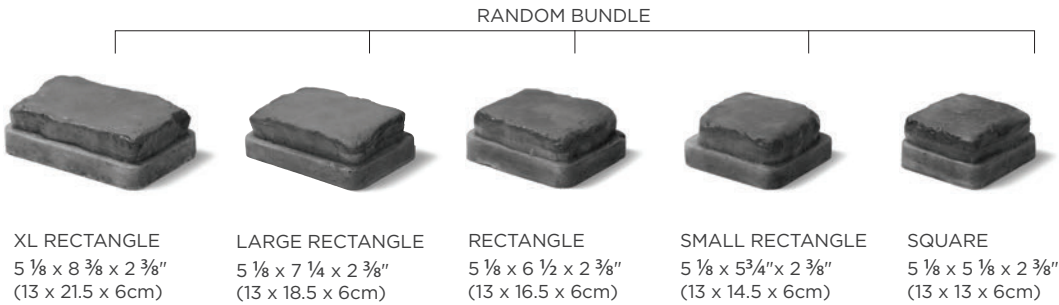


PEBBLE TAUPE



DAWN MIST /  
PEBBLE TAUPE  
BLENDED ON SITE

## PRODUCT SPECIFICATIONS



### REALA™ TECHNOLOGY

Ultra realistic textures are cast from natural stone, brick and historic cobblestones.

### ULTIMA™ CONCRETE TECHNOLOGY

A proprietary manufacturing process that creates pavers and walls with up to four times the strength of poured concrete.



Create a look reminiscent of the brick pavers used in old European cities, towns and villages. Crafted using a special forming process, each piece is uniquely altered, yet the dimensions are consistent for efficient installation.



COLORS



BASALT



BURGUNDY RED



BURNT CLAY



OLD OAK



BURGUNDY RED /  
BURNT CLAY / OLD OAK  
BLENDED ON SITE

PRODUCT SPECIFICATIONS



2 1/2 x 7 7/8 x 2 3/8"  
(6.5 x 20 x 6cm)

REALA™ TECHNOLOGY

Ultra realistic textures are cast from natural stone, brick and historic cobblestones.

ULTIMA™ CONCRETE TECHNOLOGY

A proprietary manufacturing process that creates pavers and walls with up to four times the strength of poured concrete.





With Unilock's ever increasing focus on permeable pavers, the Town Hall street paver has been designed to satisfy both traditional and permeable installation methods while maintaining a time-worn, historical and distressed appearance.



## COLORS



BASALT



BURGUNDY RED



BURNT CLAY



OLD OAK



BURGUNDY RED  
BURNT CLAY  
OLD OAK  
BLENDED ON SITE



HERITAGE CLAY



HERITAGE RED



HERITAGE 2  
COLOR BLEND  
BLENDED ON SITE

## PRODUCT SPECIFICATIONS



4 x 9 3/4 x 2 3/4"  
(10 x 25 x 7cm)



Town Hall is also available for permeable installations. See page 58

### REALA™ TECHNOLOGY

Ultra realistic textures are cast from natural stone, brick and historic cobblestones.

### ULTIMA™ CONCRETE TECHNOLOGY

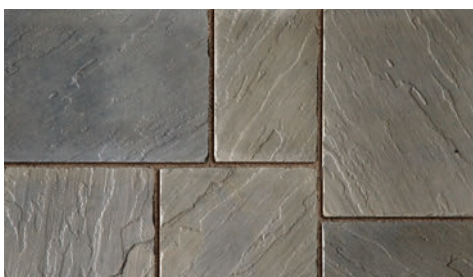
A proprietary manufacturing process that creates pavers and walls with up to four times the strength of poured concrete.



The realistic, embossed surface texture of Richcliff is cast from hundreds of natural stone surface textures to ensure a random natural appearance. It is up to four times stronger than ordinary poured concrete, making it an ideal choice for any application.



## COLORS



DAWN MIST



PEBBLE TAUPE



PEBBLE TAUPE / DAWN MIST  
BLENDED ON SITE

## PRODUCT SPECIFICATIONS

### RANDOM BUNDLE



LARGE RECTANGLE  
12 x 9 x 2 3/8"  
(30 x 22.6 x 6cm)



SQUARE  
9 x 9 x 2 3/8"  
(22.6 x 22.6 x 6cm)



SMALL RECTANGLE  
6 x 9 x 2 3/8"  
(15 x 22.6 x 6cm)

### REALA™ TECHNOLOGY

Ultra realistic textures are cast from natural stone, brick and historic cobblestones.

### ULTIMA™ CONCRETE TECHNOLOGY

A proprietary manufacturing process that creates pavers and walls with up to four times the strength of poured concrete.



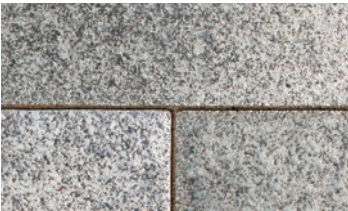
# ARTLINE™

The long, clean lines of Artline reflect an emerging trend to a minimalist, modern design approach. This is the perfect product to combine different finishes to create unique graphic interest.



**STOCK COLORS** (Consult your regional Product Data Resource Guide to find locally stocked colors)

## CUSTOM FINISH OPTIONS



UMBRIANO®  
Mottled Finish



SERIES 3000®  
Exposed Aggregate Finish



IL CAMPO®  
Brushed Finish



SMOOTH PREMIER  
Finish

## CUSTOM COLOR OPTIONS\*



## PRODUCT SPECIFICATIONS

RANDOM BUNDLE						
6 3/4" x 4 7/8" x 2 3/4" 16.9 x 12.5 x 7cm	10 3/8" x 4 7/8" x 2 3/4" 26.25 x 12.5 x 7cm	13 3/8" x 4 7/8" x 2 3/4" 33.75 x 12.5 x 7cm	17 3/4" x 4 7/8" x 2 3/4" 45 x 12.5 x 7cm	8 7/8" x 7 1/2" x 2 3/4" 22.5 x 18.75 x 7cm	13 3/8" x 7 1/2" x 2 3/4" 33.75 x 18.75 x 7cm	17 3/4" x 7 1/2" x 2 3/4" 45 x 18.75 x 7cm

*10cm (4") Artline is available for custom orders only and minimum quantities will apply. \* Please contact your Unilock Representative for more details.*



# TRIBECA COBBLE

Reminiscent of granite cobbles, these dimensionally accurate pavers are ideal for vehicular and traffic calming applications and make a great accent in your paving design.



## COLORS (Consult your regional Product Data Resource Guide to find locally stocked colors)



CRYSTALLINE BASALT



PEPPERED GRANITE

## PRODUCT SPECIFICATIONS

RANDOM BUNDLE



LARGE RECTANGLE  
5 1/8" x 12" x 2 3/8"  
(13cm x 30.5cm x 6cm)



SMALL RECTANGLE  
5 1/8" x 9" x 2 3/8"  
(13cm x 23cm x 6cm)



SQUARE  
5 1/8" x 7" x 2 3/8"  
(13cm x 17.5cm x 6cm)



Thornbury is available for both standard and permeable installations. Its modestly textured surface and three compatible sizes allow for a pleasingly random look and feel.



COLORS (Consult your regional Product Data Resource Guide to find locally stocked colors)



ALMOND GROVE   ALPINE GREY   BAVARIAN BLEND   GRANITE   MAHOGANY   NEW YORK BLEND   OAK BROWN   SYCAMORE

PRODUCT SPECIFICATIONS





Bristol Valley has a natural appearance and is ideal for almost any landscape project you can imagine. Its soft blended colors and subtle surface design give it a relaxed historical look and feel.



## COLORS (Consult your regional Product Data Resource Guide to find locally stocked colors)

				
ALMOND GROVE	ALPINE FUSION*	BAVARIAN	COPPER RIDGE	GRANITE
				
GRANITE FUSION*	NEW YORK	SIERRA	SIERRA FUSION*	STEEL MOUNTAIN

## PRODUCT SPECIFICATIONS

RANDOM BUNDLE		
		
LARGE RECTANGLE 21 x 14 x 2 3/8" (54 x 36 x 6cm)	SQUARE 14 x 14 x 2 3/8" (36 x 36 x 6cm)	SMALL RECTANGLE 7 x 14 x 2 3/8" (18 x 36 x 6cm)

Bristol Valley is not recommended for vehicular traffic.  
\* Premium pricing may apply to this color.



# MATTONI

ENDURACOLOR™

A reinterpretation of classic Roman brick with a modern spin. Available in a palette of deep, natural colors, the slim format is ideal for curved pathways, vehicular and pedestrian applications.



**COLORS** (Consult your regional Product Data Resource Guide to find locally stocked colors)



COCOA BROWN



DARK CHARCOAL



SABLE BLEND

## PRODUCT SPECIFICATIONS



9 1/2" x 2 1/4" x 2 3/8"  
(24 x 6 x 7cm)



# BRUSSELS BLOCK®

The original tumbled unit paver of North America. Its timeless warmth, relaxed appearance and tumbled finish make Brussels Block a one-of-a-kind product that reflects the design cues of quarried stone.



## COLORS (Consult your regional Product Data Resource Guide to find locally stocked colors)

					
ALMOND GROVE	COFFEE CREEK	DESERT SAND	LIMESTONE (SRI 29-ON)	MIDNIGHT CHARCOAL	MAHOGANY
					
NEW YORK BLEND	PRAIRIE	SANDSTONE (SRI 40-MA)	SIERRA	TERRA COTTA	

## PRODUCT SPECIFICATIONS



DIMENSIONAL PAVER  
8 x 12 x 4"  
(20 x 30 x 10cm)



XL STONE  
8 1/4 x 13 3/4 x 2 3/4"  
(20.8 x 34.8 x 7cm)



STANDARD STONE  
6 7/8 x 8 1/4 x 2 3/4"  
(17.4 x 20.8 x 7cm)



HALF STONE  
4 1/8 x 6 7/8 x 2 3/4"  
(10.4 x 17.4 x 7cm)



FULLNOSE  
6 x 12 x 2 3/4"  
(15 x 30 x 7cm)  
NOT AVAILABLE IN NEW YORK BLEND



# UNILOCK PERMEABLE

Since Unilock **introduced permeable** pavers to North America more than twenty-five years ago we have **steadily increased** our selection of sizes, shapes, colors and finishes. Our permeable unit pavers are self-aligning, with joint spacing that complies with the Americans with Disabilities Act.





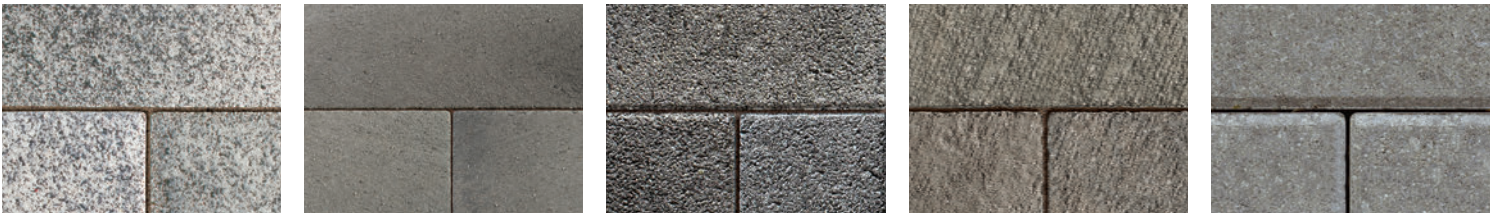
# ECO-PRIORA™

This versatile, customizable, permeable unit paver is designed with special spacer bars. The resulting 7mm gap is filled with a clear, fine stone chip that allows the rapid penetration of rainwater into the sub-base and subsoil.



**COLORS** (Consult your regional Product Data Resource Guide to find locally stocked colors)

## CUSTOM FINISH OPTIONS



UMBRIANO®  
Mottled Finish

SENZO™  
Matte Finish

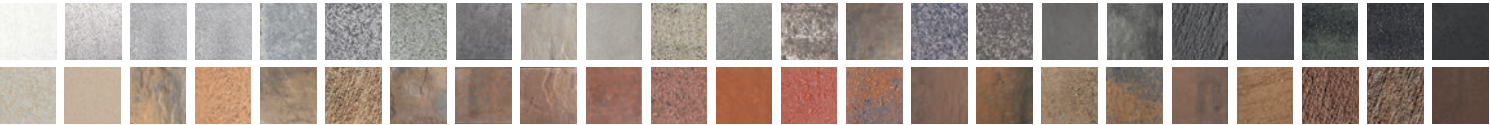
SERIES 3000®  
Exposed Aggregate Finish

IL CAMPO®  
Brushed Finish

SMOOTH/PREMIER  
Finish

## CUSTOM COLOR OPTIONS\*

Ask your Unilock Representative about locally stocked colors.



## PRODUCT SPECIFICATIONS



10 x 10 x 3 1/8"  
(24 x 24 x 8cm)  
SPECIAL ORDER



5 x 10 x 3 1/8"  
(12 x 24 x 8cm)



5 x 5 x 3 1/8"  
(12 x 12 x 8cm)  
SPECIAL ORDER

Herringbone bundles available for mechanical installation in select markets. Ask your Unilock Representative for more details.

*Eco-Priora can be manufactured in a variety of custom colors and textures. Minimum quantities will apply.\* Please contact your Unilock Representative for more details.*



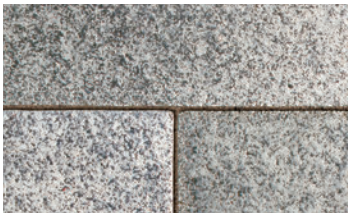
# ECO-OPTILOC™

Utilizing 'tri-axis engineering' first introduced to North America by Unilock, Eco-Optiloc is one of the best solutions for vehicular pavements. It seamlessly combines both superior load-bearing properties and drainage capabilities.

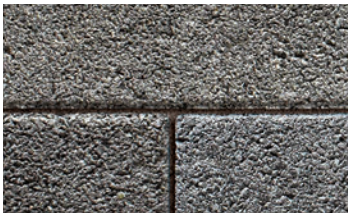


**COLORS** (Consult your regional Product Data Resource Guide to find locally stocked colors)

## CUSTOM FINISH OPTIONS



UMBRIANO®  
Mottled Finish



SERIES 3000®  
Exposed Aggregate Finish



IL CAMPO®  
Brushed Finish



SMOOTH PREMIER  
Finish

## CUSTOM COLOR OPTIONS\*

Ask your Unilock Representative about locally stocked colors.



## PRODUCT SPECIFICATIONS



10 1/4 x 10 1/4 x 3 1/8"  
(26cm x 26cm x 8cm)

*Eco-Optiloc can be manufactured in a variety of custom colors and textures. Minimum quantities will apply. \* Please contact your Unilock Representative for more details.  
Designed for mechanical installation.*



Permeable, heavy duty unit pavers have never been so 'on-trend'. With custom finish and color options and the ability to be mechanically installed, this product is not only beautiful, but cost effective.



## CUSTOM FINISH OPTIONS



UMBRIANO®  
Mottled Finish

SERIES 3000®  
Exposed Aggregate Finish

IL CAMPO®  
Brushed Finish  
Not available in all markets

SMOOTH PREMIER  
Finish

## CUSTOM COLOR OPTIONS\*



## PRODUCT SPECIFICATIONS

SPECIAL ORDER RANDOM BUNDLE							
							
14 x 3 5/16 x 4" (35.7 x 8.4 x 10cm)	12 1/2 x 3 5/16 x 4" (31.7 x 8.4 x 10cm)	11 x 3 5/16 x 4" (27.7 x 8.4 x 10cm)	9 3/8 x 3 5/16 x 4" (23.7 x 8.4 x 10cm)	14 x 4 1/2 x 4" (35.7 x 11.4 x 10cm)	12 1/2 x 4 1/2 x 4" (31.7 x 11.4 x 10cm)	11 x 4 1/2 x 4" (27.7 x 11.4 x 10cm)	9 3/8 x 4 1/2 x 4" (23.7 x 11.4 x 10cm)

Eco-Line can be manufactured in a variety of custom colors and textures. Minimum quantities will apply. \* Please contact your Unilock Representative for more details.  
Designed for mechanical installation.



# ECO-PROMENADE™ PERMEABLE

Eco-Promenade plank paver brings the long linear look and feel to any contemporary permeable application while being capable of vehicular loads. Available in many custom finishes and colors to suit your project design.



*Eco-Promenade can be manufactured in a variety of custom colors and textures. See product details on page 36. Minimum quantities will apply. \*Please contact your Unilock Representative for more details.*

# THORNBURY™ PERMEABLE **ENDURACOLOR™**

Thornbury permeable has a modestly textured surface and three compatible sizes allowing for a pleasingly, random look and feel. Available in many stock colors, yet open to customization to complement your design.



*Thornbury is available in stock colors and custom colors. See product details on page 49. Minimum quantities will apply. \*Please contact your Unilock Representative for more details.*



# TOWN HALL<sup>®</sup> PERMEABLE



**ENDURACOLOR<sup>™</sup>**  
**PLUS** ARCHITECTURAL FINISHES

Town Hall street paver with Ultima<sup>™</sup> Technology has been designed to satisfy both traditional and permeable installation methods while maintaining a time-worn, historical and distressed appearance using Reala<sup>™</sup> Technology.



See product details on page 45 \*Please contact your Unilock Representative for more details.

# CITY PARK PAVER<sup>™</sup> PERMEABLE



City Park Paver permeable is a traditional urban paver shape with the added benefit of being permeable and is available in many custom finishes and colors. This paver shape is a class-act no matter what the application, residential, park or plaza.



City Park Paver can be manufactured in a variety of custom colors and textures. See product details on page 42. Minimum quantities may apply. \*Please contact your Unilock Representative for more details.



# DETAILS

## JOINTING COMPOUND OPTIONS

---

### POLYMERIC SAND

A special mix of graded sand and binder specifically formulated for achieving optimum lock-up of pavers and slabs.

### EASY-PRO™

Pre-mixed and ready to use, no haze formulation, that can be applied during dry or wet weather.

For joint widths from ¼" (6.3mm) and depths from 1 ¼" (30mm).

### UNILOCK FLEXIBLE EPOXY MORTAR - D1

Many times stronger than polymeric, this high strength, permeable, yet flexible, epoxy mortar is suitable for medium traffic loads up to 7.5 tons. It is easy to install, self-compacting and can be applied during dry or wet weather and does not require additional expansion joints. For joint widths from ¼" (6.3mm) and depths from 1 ¼" (30mm).

### GRANITE CHIP

This high-strength crushed and washed granite meets ASTM No. 9 Stone Specifications for permeable joint filler.

Available in a range of colors to work with your paving design.

## JOINTING COLORS

Changing the jointing sand color can dramatically change the look and feel of the pavement surface. Various colors are available in traditional sands or polymer modified and epoxy modified compounds.

Courtstone® (Basalt / Belgian Blue)



BLACK  
SAND



TAN  
SAND



GREY  
SAND

## NIGHTEC®

---

NighTec is a subtle way to provide accent lighting on your project without wiring, batteries or charging. NighTec photo luminescent pavers glow from absorbed sunlight during the day and can be installed like any other unit paver.



NighTec paver during daytime.



NighTec paver during nighttime.



# UNILOCK ARCHITECTURAL SLABS

Unilock's full line of **architectural slabs** offer many **different finish and color options**. Continue themes from on-grade to rooftop applications creating a harmony between building site paving and outdoor spaces.





# SORENO

Soreno features a flamed-like texture made of fine-grained, natural stone grit for a surefooted surface that is smooth and elegant in appearance.



## COLORS (Consult your regional Product Data Resource Guide to find locally stocked colors)



LIGHT GRANITE



SLATE GREY



TOSCANA BEIGE

## PRODUCT SPECIFICATIONS



23 7/8 x 23 7/8 x 2"  
606 x 606 x 50mm



17 7/8 x 23 7/8 x 2"  
453 x 606 x 50mm



11 7/8 x 23 7/8 x 2"  
301 x 606 x 50mm

### EASYSOIL™ STAIN RESISTANCE- CF® 100

An integral surface protection that allows for easier cleanup of spills when they happen, before a stain can develop.

*Soreno is not recommended for vehicular traffic.*



# ARCANA



Arcana has a fine blasted texture of natural stone chips in subtle color tones creating an extremely durable surface, ideal for high traffic pedestrian areas.



## COLORS (Consult your regional Product Data Resource Guide to find locally stocked colors)



VIVANTO



MODENA



LUGANO

## PRODUCT SPECIFICATIONS



23 7/8 x 23 7/8 x 2"  
606 x 606 x 50mm



17 7/8 x 23 7/8 x 2"  
453 x 606 x 50mm



11 7/8 x 23 7/8 x 2"  
301 x 606 x 50mm

### EASYCLEAN™ STAIN RESISTANCE- CF® 100

An integral surface protection that allows for easier cleanup of spills when they happen, before a stain can develop.

*Arcana is not recommended for vehicular traffic.*



Ideally suited for roof decks, walkways, patios and pool decks, Rivenstone offers the subtleties of natural flagstone while maintaining the durability and consistency of concrete.



COLORS (Consult your regional Product Data Resource Guide to find locally stocked colors)



BLUESTONE



CANYON

REALA™ TECHNOLOGY

Ultra realistic textures are cast from natural stone, brick and historic cobblestones.

PRODUCT SPECIFICATIONS



24 x 24 x 1 3/4"  
(60 x 60 x 4.5cm)



18 x 24 x 1 3/4"  
(45 x 60 x 4.5cm)



18 x 18 x 1 3/4"  
(45 x 45 x 4.5cm)



12 x 24 x 1 3/4"  
(30 x 60cm x 4.5cm)



12 x 12 x 1 3/4"  
(30 x 30 x 4.5cm)

*Rivenstone is not recommended for vehicular traffic or vehicular snow plowing. Selection may vary by market.*



Ideally suited for roof decks, walkways, patios and pool decks, Yorkstone offers the subtleties of limestone while maintaining the durability and consistency of concrete.



COLORS (Consult your regional Product Data Resource Guide to find locally stocked colors)



HONEY GOLD



IRON RIVER (SRI 61)

REALA™ TECHNOLOGY

Ultra realistic textures are cast from natural stone, brick and historic cobblestones.

PRODUCT SPECIFICATIONS



24 x 24 x 1 3/4"  
(60 x 60 x 4.5cm)



18 x 24 x 1 3/4"  
(45 x 60 x 4.5cm)



12 x 24 x 1 3/4"  
(30 x 60 x 4.5cm)

*Yorkstone is not recommended for vehicular traffic or vehicular snow plowing. Selection may vary by market.*



# ROOF DECKS ARCHITECTURAL SLABS & LARGE FORMAT PAVING

Unilock offers a full line of architectural roof pavers with EnduraColor™ and EnduraColor™ Plus Architectural Finish options that were traditionally designed for on-grade applications. This creates a harmonious looking project between building outdoor spaces and site paving.

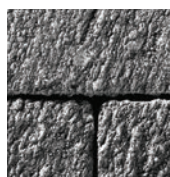
## SIZE & FINISH OPTIONS



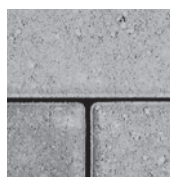
UMBRIANO®  
Mottled Finish



SERIES 3000®  
Exposed  
Aggregate Finish



II CAMPO®  
Brushed Finish



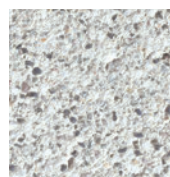
ENDURACOLOR™  
Smooth Premier  
Finish



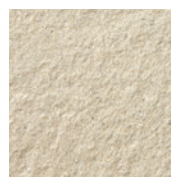
RIVENSTONE™  
Flagstone Finish



YORKSTONE™  
Limestone Finish



ARCANA  
Fine Blasted  
Finish



SORENO  
Flamed-like Finish

Available Sizes	Thickness	Weight	Umbriano®	Series 3000®	Il Campo®	EnduraColor™ Premier Smooth	Rivenstone™	Yorkstone™	Arcana	Soreno
	4"	46 lbs/sq.ft.	•	•	•	•				
	4"	46 lbs/sq.ft.	•	•	•	•				
	1¾"	19lbs/sq. ft.					✓	✓		
	2"	22lbs/sq.ft.	•	•	•	•			✓	✓
	2¾"	31lbs/sq.ft.	✓	•	•	•				
	4"	46 lbs/sq.ft.		•	•	•				
	1¾"	19lbs/sq. ft.					✓	✓		
	2"	22lbs/sq.ft.							✓	✓
	2¾"	31lbs/sq.ft.					✓	✓		
	1¾"	19lbs/ sq.ft.					✓	✓		
	2"	22lbs/sq.ft.							✓	✓
	2¾"	31lbs/sq.ft.	✓	•	•	•				
	1¾"	19lbs/ sq.ft.					✓	✓		
	2¾"	31lbs/sq.ft.	•	•	•	•				

Contact your Unilock Representative to determine available finishes and colors in your region.

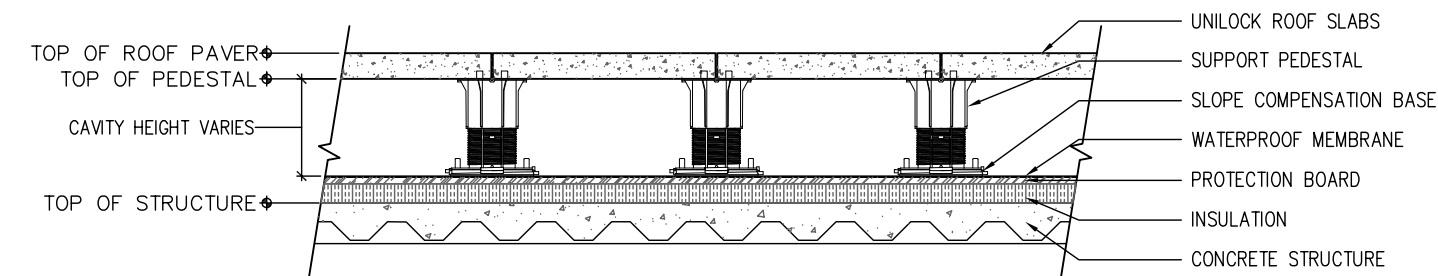
- ✓ stocked product in select locations, contact your Unilock Representative
  - order only (verify locally manufactured finishes with your Unilock Representative)
- All sizes are nominal. Verify actual paver dimension to establish grid spacing.



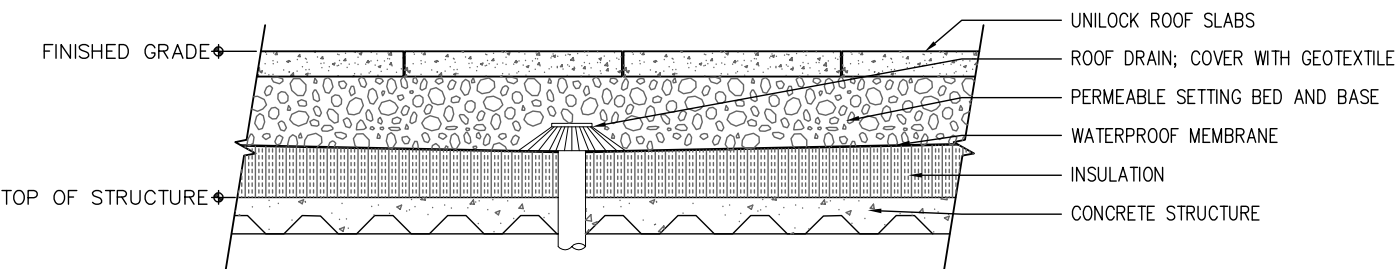
# ROOF DECK INSTALLATION SYSTEMS

Unilock products can be installed on the roof deck using different installation systems, relevant to the site conditions. The cross sections below are examples of the type of installation. Please contact your Unilock Representative for further technical information.

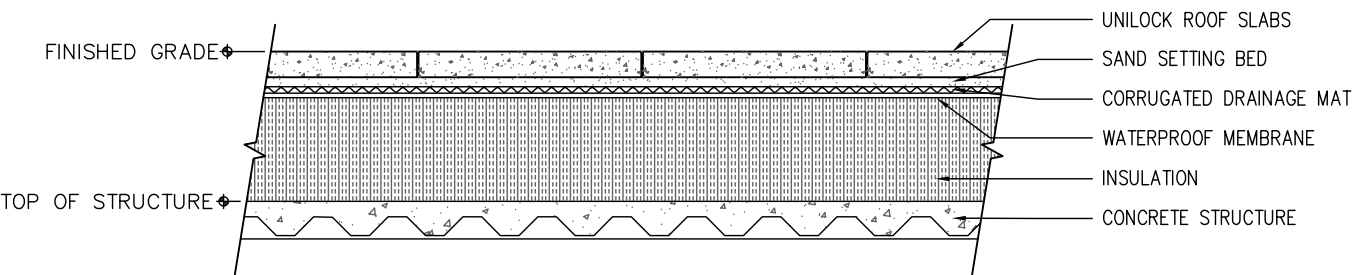
## PEDESTAL SYSTEM



## GRANULAR BASE SYSTEM



## SAND SET WITH DRAINAGE MAT AND INSULATION



Unilock architectural roof pavers are manufactured in four thicknesses and range from 19 lbs/sq.ft. to 46 lbs/sq.ft. to accommodate various roof structural weight limits. Each is manufactured to exceed minimum flexural strength requirements of both the ASTM\* C293 and CSA\*\* A231.1, to be placed on pedestal systems.

Contact your Unilock Representative for specific product results.

Paver Thickness	ASTM C140 Compressive Strength	ASTM C140 Water Absorption	ASTM C1645 Freeze/Thaw†	ASTM C293 Flexural Strength	CSA 231.1 Flexural Strength
1¾", 2", 2¾", 4"	8,500 PSI MIN.	5% MAX.	< 500 G/M2	>1,000 PSI MIN.	>650 PSI MIN.

† Results after 49 cycles

\*ASTM – American Society of Testing and Materials    \*\*CSA – Canadian Standards Association



## PEDESTAL SYSTEMS

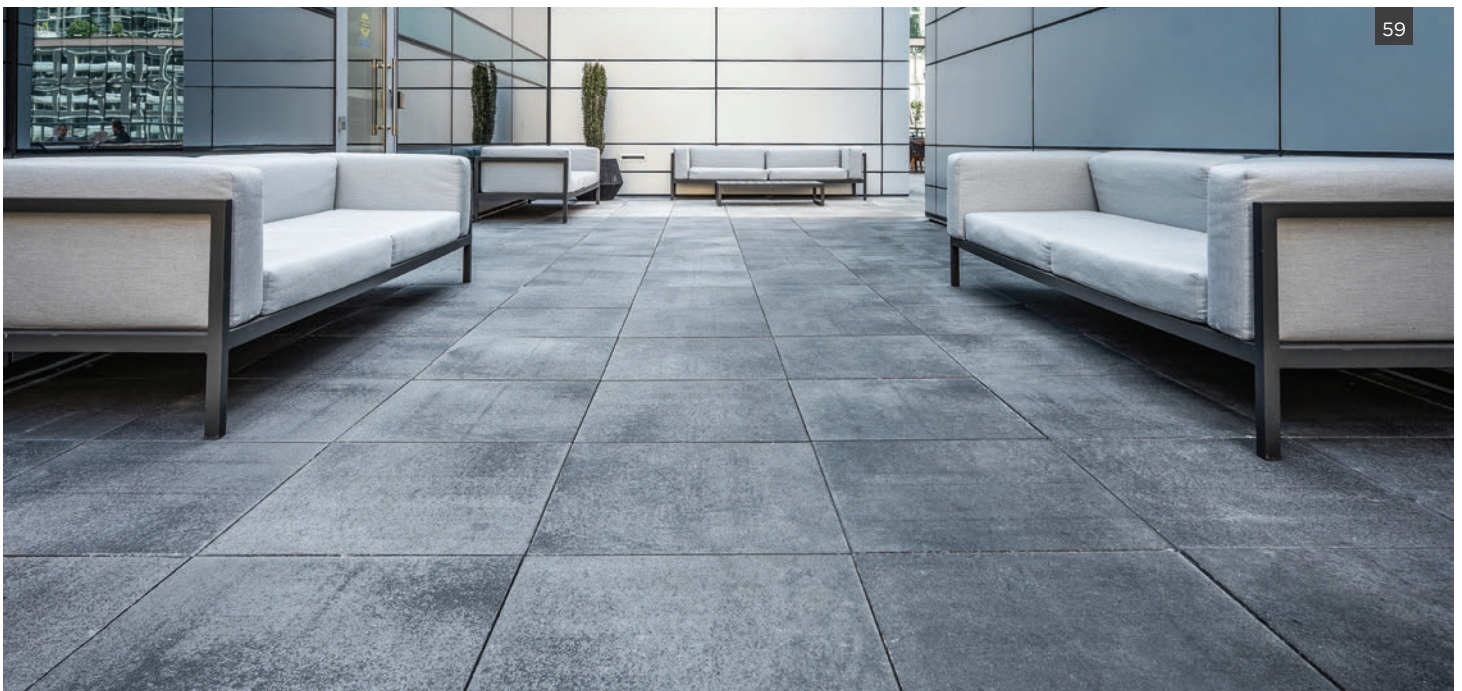
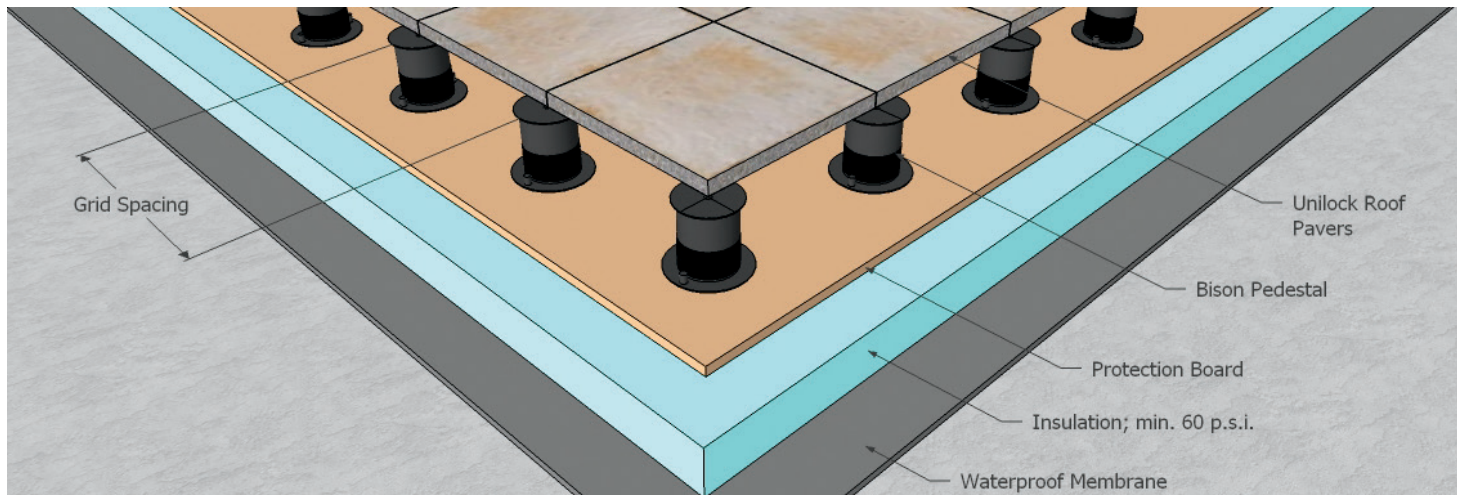
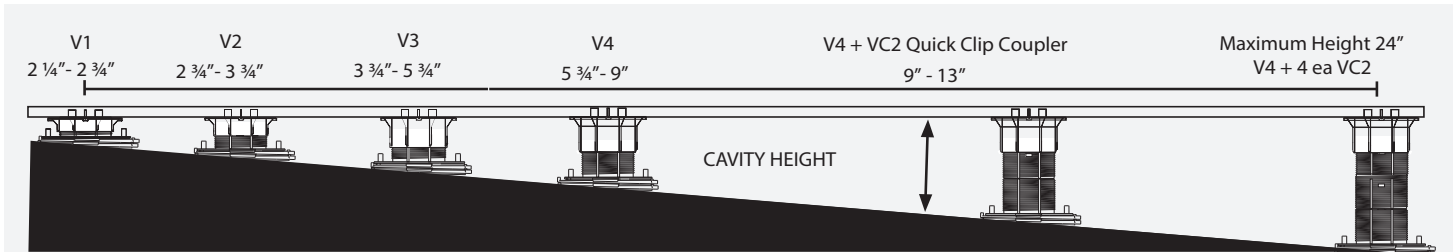
As an authorized distributor of Bison Innovative Products, Unilock can provide required pedestals and accessories.

### VERSADJUST

- Supports heaviest load 1250 lbs per pedestal (FS:3)
- Integrated leveler accommodates zero to 0.5"/foot slope
- Height adjustment ranges from 2 ¼" to 36"
- Accessories for heights from ⅛" to 2 ¼"
- Contains 20% post industrial recycled material
- Impervious to water, mold and freeze/thaw
- Made in U.S.A.

### LEVEL-IT

System available for height adjustment ranges from ⅛" to 12" and supports heaviest loads of 750 lbs per pedestal (FS:3).





# LEED® CREDIT OPPORTUNITIES

LEED, or Leadership in Energy & Environmental Design, is a green building certification program that recognizes best-in-class building strategies and practices that have a positive impact on the health of occupants, while promoting renewable, clean energy. To receive LEED certification, building projects satisfy prerequisites and earn points to achieve different levels of certification. Unilock products can help with your certification goals.

## POTENTIAL LEED CREDITS FOR UTILIZING PERMEABLE PAVERS

### RAINWATER MANAGEMENT: LEED V4

Up to three points can be achieved for retaining rainwater onsite based on the percentile kept. 85% (zero lot line projects only) • 3 points, 95% - 2 points and 98% - 3 points. (all except Healthcare - subtract one point)  
See LEED v4 for more specific project/site details.

### MATERIALS AND RESOURCES: LEED V4






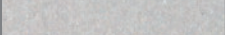



Building Product Disclosure and Optimization - Sourcing of Raw Materials - Sourcing of Raw Materials and Extraction • 1 point  
Building Product Disclosure and Optimization - Sourcing of Raw Materials - Leadership Extraction Practices • 1 point  
Building Product Disclosure and Optimization - Material Ingredient Reporting- Material Ingredient Reporting • 1 point  
Building Product Disclosure and Optimization - Material Ingredient Reporting - Material Ingredient Optimization • 1 point  
Building Product Disclosure and Optimization - Environmental Product Declaration • 1 point

### HEAT ISLAND REDUCTION - NON-ROOF: LEED V4

Paving materials with a three-year aged solar reflectance (SR) value of at least 0.28. If three-year aged value information is not available, use materials with an initial SR of at least 0.33 at installation OR use an open grid pavement at least 50% pervious • 2 points (except Healthcare - 1 point)  
See LEED v4 for more specific site calculations.

### SOLAR REFLECTANCE

Solar Reflectance Index (SRI) is a criterion used by USGBC that measures values of sunlight and radiation bouncing from built surfaces. It is used to measure urban heat island effects in city centers. Dark pavement absorbs heat during the day and then releases it at night. This process creates a situation that causes urban centers to stay warmer all the time which contributes to air pollution and increased energy consumption. Careful selection of materials and colors can help reduce urban heat island effects.

SAMPLE OF QUALIFIED UNILOCK COLORS (≥33)				
Surface Finish	Color	Swatch	Solar Reflectance	SRI*
Umbriano® (mottled)	Summer Wheat		0.42	48
	Winter Marvel		0.35	38
Series 3000® (exposed aggregate)	Golden Tan		0.40	45
	Chardonnay Tan		0.39	44
	Coral Gem		0.37	41
	Ice Grey		0.35	38
	Mineral Ice		0.31	33
Smooth/Premier (any Unilock paver shape)	TX Active White		0.46	53
	Tuscany Blend		0.39	44
	Opal		0.32	34
Standard Finish	Nevada		0.31	33
Stonemark Finish	Iron River		0.52	61

Values may change slightly by region due to variations in local aggregate. Please be sure to contact your Unilock Representative for a comprehensive and current list of SRI product values.





## RECYCLED CONTENT

### SUPPLEMENTARY CEMENTITIOUS MATERIALS (SCM)

Concrete is a mixture of sand, coarse aggregate, water and the principal cementitious material which is Portland cement. Today, most concrete recipes also contain supplementary cementitious material (SCM) admixtures. These can be by-products from other processes or natural materials that may or may not have been further processed for use in concrete. These materials may include Fly Ash (Class C or F), Ground Granulated Blast Furnace Slag (GGBFS), Silica Fume, Natural Pozzolans, recycled glass and more.

These admixtures can contribute toward achieving the cumulative minimum recycled content criteria for Leadership Extraction Practices.

Speak with your Unilock Representative about local SCM's available for custom orders.

**PROJECT:** Navy Pier, Chicago, Illinois

**DESIGN:** James Corner Field Operations

**PRODUCT:** Promenade™ Plank Paver - Series® 3000  
finish in custom colors

Navy Pier, the world's largest public pier was reimaged for its centennial with pier-wide enhancements designed to elevate its status as the top-attended leisure destination in the Midwest.

James Corner Field Operations worked closely with Unilock to create pavers that would help achieve SITES® certification. Using 30% copper slag as recycled content in the pavers created a stronger paver and when combined with local aggregate an attractive 'salt and pepper' effect was achieved on the exposed aggregate finish. Subtle changes in the aggregate and pigment created four colors for the pier which will withstand this highly trafficked environment. The reimagination of Navy Pier has created a contemporary 'pierscape' with engaged social spaces that encourage movement, exploration, interaction and discovery.



# APPLICATION BY SIZE, BY THICKNESS AND PRODUCT

The aspect ratio of the paver unit (length / height = aspect ratio) directly correlates to the recommended usage. A ratio of 3:1 or less is recommended for Commercial and Heavy-Duty Vehicular applications, 4:1 for Residential and Light-Duty Vehicular applications, and over 5:1 for Pedestrian only. Reference the chart below as a guideline and contact your Unilock Representative for more information.

Product	Product Size	Thickness	Pedestrian	Commercial Pedestrian*	Light-Duty Vehicular	Commercial Vehicular	Heavy-Duty	Permeable
	36 x 36	10 cm	✓					
	18 x 36	10 cm	✓					
	24 x 24	15 cm	✓	✓	✓			
	24 x 24	10 cm	✓	✓	✓			
	24 x 24	7 cm	✓					
	24 x 24	5 cm	✓					
	24 x 24	4.5 cm	✓					
	18 x 24	5 cm	✓					
	18 x 24	4.5 cm	✓					
	18 x 18	4.5 cm	✓					
	16 x 24	10 cm	✓	✓	✓**			
	12 x 24	15 cm	✓	✓	✓	✓		
	12 x 24	10 cm	✓	✓	✓**			
	12 x 24	7 cm	✓					
	12 x 24	5 cm	✓					
	12 x 24	4.5 cm	✓					
	8 x 24	15 cm	✓	✓	✓			
	8 x 24	10 cm	✓	✓	✓**			
	6 x 24	15 cm	✓	✓	✓	✓		
	6 x 24	7 cm	✓					
	16 x 16	10 cm	✓	✓	✓	✓		
	16 x 16	8 cm	✓	✓	✓			
	16 x 16	7 cm	✓	✓	✓			
	8 x 16	10 cm	✓	✓	✓	✓		
	8 x 16	7 cm	✓	✓	✓			
	4 x 16	10 cm	✓	✓	✓	✓		
	12 x 12	10 cm	✓	✓	✓	✓		
	12 x 12	8 cm	✓	✓	✓			
	12 x 12	7 cm	✓	✓	✓			
	12 x 12	4.5 cm	✓					
	6 x 12	10 cm	✓		✓	✓	✓	
	6 x 12	8 cm	✓	✓	✓	✓		
	6 x 12	7 cm	✓	✓	✓			
	10 x 10	8 cm	✓	✓	✓	✓		✓
	5 x 10	8 cm	✓	✓	✓	✓	✓	✓
	8 x 8	7 cm	✓	✓	✓	✓		
	6 x 8	7 cm	✓	✓	✓	✓	✓	
	4 x 12	10 cm	✓	✓	✓	✓	✓	
	4 x 12	8 cm	✓	✓	✓			
	4 x 12	7 cm	✓	✓	✓			
	3 x 12	10 cm	✓	✓	✓	✓	✓	✓
	6 x 6	8 cm	✓	✓	✓	✓		
	6 x 6	7 cm	✓	✓	✓	✓		
	5 x 5	8 cm	✓		✓	✓		✓
	4 x 8	8 cm	✓	✓	✓	✓	✓	
	4 x 8	7 cm	✓	✓	✓	✓		
	4 x 8	6 cm	✓	✓	✓			
	4 x 4	7 cm	✓	✓	✓	✓		
	3 x 6	10 cm	✓	✓	✓	✓	✓	
Anchorlock®		8 cm	✓	✓	✓	✓	✓	
Artline™		7 cm	✓					
Artline™		10 cm	✓	✓	✓			
Avante Ashlar™		7 cm	✓	✓	✓			
Bristol Valley™		6 cm	✓					
Brussels Block®		7 cm	✓	✓	✓			
Brussels Dimensional™ Paver		10 cm	✓	✓	✓	✓		
City Park Paver™		7 cm	✓	✓	✓	✓		✓ (8cm)
Cophorne®		6 cm	✓	✓	✓	✓		
Courtstone®		6 cm	✓	✓	✓	✓		
Dura-Mat™		10 cm			✓			✓
Eco-Line™		10 cm	✓	✓	✓	✓	✓	✓
Eco-Optiloc™		8 cm	✓	✓	✓	✓	✓	✓
Mattoni		7 cm	✓	✓	✓			
Optiloc®		8 cm	✓	✓	✓	✓	✓	
Richcliff®		6 cm	✓	✓	✓	✓		
Thornbury™		7 cm	✓	✓	✓			✓
Town Hall™		7 cm	✓	✓	✓	✓		✓

All pavements require a site specific design.

A Herringbone laying pattern is essential for most vehicular trafficked pavements and becomes more critical as the demands on the pavements increase. Please contact your local Unilock Representative for specific design details. This chart is only a guideline.

\* subject to occasional light duty service vehicles

\*\* installed on a concrete base



# UNILOCK RETAINING WALLS

A great retaining wall should provide an **aesthetic that blends** subtly with the environment and **surrounding architecture**. Segmental retaining walls have been the choice of Landscape Architects, Designers and Engineers who are looking for classic, clean lines and timeless appeal.





# LINEO™ DIMENSIONAL STONE

Contemporary and sleek lines define Lineo Dimensional Stone with a linear multi-length plank look. Ideal for garden walls, pillars and other outdoor vertical elements, Lineo Dimensional Stone offers up modern design and exceptional flexibility.



## COLORS (Consult your regional Product Data Resource Guide to find locally stocked colors)

				
ALMOND GROVE	GRANITE	LIMESTONE	MAHOGANY ASH	MIDNIGHT CHARCOAL
				
PLATINUM	SANDALWOOD	SANDSTONE	SIERRA	WALNUT

## PRODUCT SPECIFICATIONS

RANDOM BUNDLE



UNIT 1 12 x 8 x 4 " 30 x 20 x 10cm	UNIT 2 16 x 8 x 4 " 40 x 20 x 10cm	UNIT 3 20 x 8 x 4 " 50 x 20 x 10cm	UNIT 4 24 x 8 x 4 " 61 x 20 x 10cm
--	--	--	--



# RIVERCREST® WALL

Unilock's most natural, versatile and easy-to-use wall system. The unique engineered S-shape and patent pending-design creates vertical and lateral interlock for added strength, making it ideal for retaining walls up to 1.8m (6.0') when combined with geogrid reinforcement.



## WALL FINISH RIVERCREST



BUFF



COASTAL SLATE

Ask your Unilock Representative about local color availability.



## PRODUCT SPECIFICATIONS



### REALA™ TECHNOLOGY

Ultra realistic textures are cast from natural stone, brick and historic cobblestones.

### ULTIMA™ CONCRETE TECHNOLOGY

A proprietary manufacturing process that creates pavers and walls with up to four times the strength of poured concrete.



PILLAR UNIT



# PISA 2<sup>®</sup>/CONCORD WALL<sup>™</sup>

The built-in setback design of Pisa2/Concord Wall automatically forms the correct slope, ensuring a highly stable retaining wall. Utilizing the tapered components, you can form curved walls and steps. Gravity walls up to 3.5 ft (1m) and grid reinforced walls up to 25 ft (7.5m) high under typical conditions.



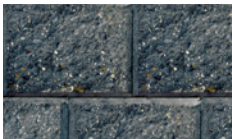
## COLORS (Consult your regional Product Data Resource Guide to find locally stocked colors)



ALMOND GROVE



BEECHWOOD



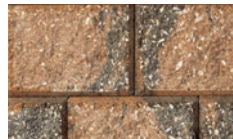
CHARCOAL



GRANITE



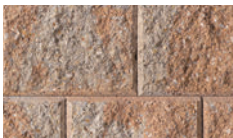
MAHOGANY ASH



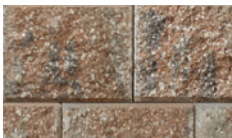
ST CLAIR



NATURAL



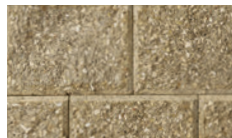
NEVADA



RIVER



RUSTIC RED



SANDSTONE



SIERRA

## PRODUCT SPECIFICATIONS



STANDARD  
8 x 6 x 12"  
20 x 15 x 30cm



TAPERED  
8 x 6 x 12"  
20 x 15 x 30cm



CORNER  
12 x 6 x 8"  
30 x 15 x 20cm



PISA COPING  
12 x 3 x 12"  
30 x 7.5 x 30cm



XL UNIT  
16 x 6 x 12"  
40 x 15 x 30cm

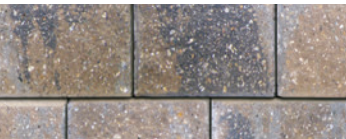


# ROMAN PISA®/ROMAN WALL®

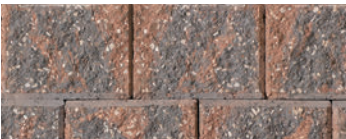
RomanPisa boasts a distressed appearance that gives the impression that it has been around for decades. Admired for versatility and style, RomanPisa can be used to form straight or curved walls, as well as planters and steps. Gravity walls up to 3.5 ft (1m) and grid reinforced walls up to 25 ft (7.5m) high under typical conditions.



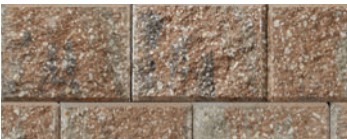
## COLORS (Consult your regional Product Data Resource Guide to find locally stocked colors. Not available in all markets)



ALMOND GROVE



BEECHWOOD



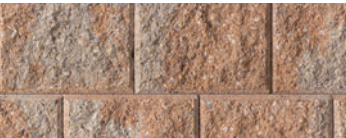
COFFEE CREEK



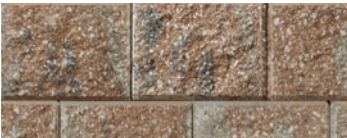
GRANITE



MAHOGANY ASH



NEVADA



RIVER



SIERRA

## PRODUCT SPECIFICATIONS



STANDARD  
8 x 6 x 12"  
20 x 15 x 30cm



TAPERED  
8 x 6 x 12"  
20 x 15 x 30cm



CORNER  
12 x 6 x 8"  
30 x 15 x 20cm



ROMAN COPING  
12 x 3 x 12"  
30 x 7.5 x 30cm



# SIENA STONE®

This big, bold stone is impressive as a wall or as treads in large outdoor staircases. SienaStone's long lines and split face appearance make it an attractive alternative for heavier load bearing applications. Gravity walls up to 10 ft (3m) or grid reinforced up to 40 ft (12m) under typical conditions.



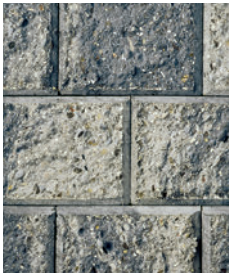
## COLORS (Consult your regional Product Data Resource Guide to find locally stocked colors)



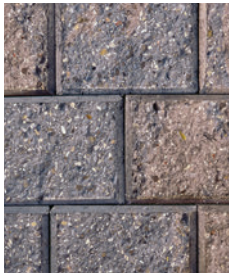
NATURAL



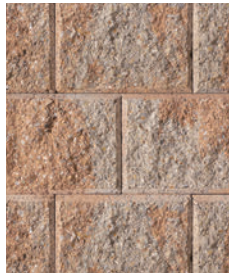
BROWN\*\*



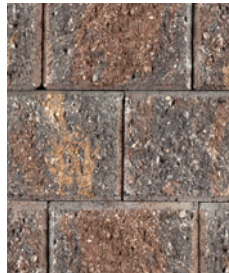
GRANITE\*\*



MAHOGANY ASH\*\*



NEVADA\*\*



SIERRA\*\*

## PRODUCT SPECIFICATIONS



STANDARD 333



STANDARD 500



STANDARD 925



COPING

Refer to Product Data Resource Guide for unit measurements.  
Also available: Corner 90 Right & Left, Corner 45 Right & Left, Closed End Coping.  
For detailed product information and local color availability contact your Unilock Representative.  
\*\* Available only in Closed End Coping.



# DURA HOLD®

The large size of DuraHold (1680lbs./762kg.) makes it an appropriate choice for demanding structures up to 40ft. (12.2m). Proper engineering and a good selection of components make this an exceptional wall system for gravity, tie-back or grid reinforced walls. A great alternative to “poured in place” concrete. Gravity walls up to 6 ft (1.8 m) in typical conditions.



For detailed product information and local color availability contact your Unilock Representative.

# DURA HOLD2®

DuraHold2 is similar to DuraHold in appearance, but is almost half the size, (820lbs./363kg.), making it economical for low walls. Concrete tiebacks or Geogrid reinforcement expands the various engineering options, allowing for structures up to 25 ft. (7.62m) high. Gravity walls up to 4 ft (1.2 m) in typical conditions.



For detailed product information and local color availability contact your Unilock Representative.



# PHOTO INDEX

#	Project Name	City	State	Product	Project Size	Designer	Page
1	Town of Williamsville	Williamsville	NY	Town Hall	2,000	Joy Kuebler Landscape Associates	4
2	Fleet Avenue	Cleveland	OH	Courtstone / Copthorne	30,000	AECOM	5
3	North Union Streetscape	Olean	NY	Eco-Priora - custom color	23,000	Mott-MacDonald	5
4	100 Pier 4	Boston	MA	Holland Premier	20,000	Mikyoung Kim Design	6
5	Boulangerie Paillard	Quebec City	QC	Artline with Umbriano finish	2,000	Groupe Espace Vie	7
6	Mechanics Plaza	Worcester	MA	Umbriano	30,000	CBA Landscape Architects, LLC	7
7	Navy Pier	Chicago	IL	Promenade Plank Paver / Eco-Promenade with Series 3000 finish custom color	175,000	James Corner Field Operations	8
8	Westfield River Overlook	Westfield	MA	Hollandstone / Europaver / Eco-Priora / ADA / 12x24 custom	11,000	VHB	9
9	Centre D'Art Diane Dufresne	Repentigny	QC	Promenade Plank Paver with Il Campo and Smooth Premier finishes	22000	Group BC2-	9
10	Plaza de las Americas	Manhattan	NY	Senzo / Eco-Priora - custom colors	30,000	RBA Group / HOK Architects	10
11	Storrs Center	Mansfield	CT	Series 3000 / Eco-Priora with Series 3000 finish - custom colors	14,000	Kent + Frost Landscape Architecture	11
12	City Square Parking Garage	Worcester	MA	Hollandstone with Umbriano finish	22,000	CBA Landscape Architects, LLC	11
13	Hudson Valley Office Complex	Tarrytown	NY	Promenade Plank Paver - Umbriano finish	24,000	W Architecture & Landscape Architect / Perkin + Will	12
14	Oakbrook Business Park	Oak Brook	IL	Artline / Umbriano / Lineo Dimensional Stone	9,800	Oakbrook Business Park	13
15	Continental Towers	Rolling Meadows	IL	Series 3000	10,000	Teska Associates	13
16	Bishops Place Condominium	West Hartford	CT	Umbriano / Richcliff / Copthorne	4,500	CR3 LLP	14
17	Fuse Condominium	Cambridge	MA	Eco-Priora - custom colors	15,000	Halvorson Design Partnership, Inc	15
18	The Preserve - Phase 1	Oakville	ON	Artline - Umbriano and Smooth Premier finish	54,000	NAK Design Group	15
19	One Federal	Boston	MA	Umbriano	4,500	Carol R Johnson Associates, Inc.	16
20	Central Park Zoo - Bear Exhibit	Manhattan	NY	Rivenstone	3,000	Central Park Commission	17
21	The Solena Retirement Community	Deer Park	IL	24 x 24" with Smooth Premier finish	8,000	Daniel Weinbach & Partners, LTD	17
22	SUNY Cortland Tennis Courts	Cortland	NY	Town Hall / Eco-Priora	5,000	HMH Sports Sites and Design	18
23	Hutchinson Metro Center	Bronx	NY	Umbriano	8,000	owner	19
24	Triton College Stadium	River Grove	IL	Eco-Priora with Il Campo / Series 3000 finish	1,500	Wight & Company	19
25	Holiday Valley Resort	Ellicottville	NY	Hollandstone	7,000	Steve Beatty	20
26	Nemacolin Woodlands Resort	Farmington	PA	Richcliff / Natural Stone	8,000	LaQuatra Bonci Associates	21
27	Tickles Restaurant	Swansea	MA	Bristol Valley / Copthorne	4,000	Birchwood Design Group	21 / 50
28	Canon Canada	Brampton	ON	Umbriano	80,850	Moriyama & Teshima Architects	22
29	Delrose Street	Pittsburgh	PA	Eco-Optiloc custom color	32,000	MS Consultants	23
30	Riverside Parking Lot	Riverside	IL	Eco-Priora with Il Campo finish	6,000	Christopher B Burke Engineering Ltd	23
31	Munger Hall at University of Michigan	Ann Arbor	MI	Eco-Priora - custom color with TX Active	13,000	Beckett and Raider	24
32	Norwalk Streetscape	Norwalk	CT	Eco-Priora - custom color	20,000	Didona Associates Landscape Architects LLC	25
33	Frick Environmental Center	Pittsburgh	PA	Eco-Priora - custom color	6,000	LaQuatra Bonci Associates	25



#	Project Name	City	State	Product	Project Size	Designer	Page
34	Car Dealership	Rochester	NY	Estate Wall	600	Wayside Construction	26
35	Parkridge Streetscape Wall	Chicago	IL	Rivercrest Wall	600	Van Horst	27
36	Cobblestone Hotel & Suites	Erie	PA	DuraHold	4,100	Risi Stone Engineering	27 / 75
37	Wilfrid Laurier University	Waterloo	ON	Umbriano	7,000	Du Toit Allsopp Hillier	35
38	Bristol Community College	Fall River	MA	Promenade Plank Paver - Umbriano finish	9,500	Sasaki Associates	37
39	Canary District Streetscape former Pan Am Athletes Village 2015	Toronto	ON	Series 3000	330,000	The Planning Partnership	39
40	University of Chicago Pavilion	Chicago	IL	Senzo	2,000	Campus Design	40
41	East Side Bond	Pittsburgh	PA	Il Campo / Umbriano / Promenade Plank Paver / Natural Stone	22,600	Design Collective	41
42	Ontario Square at York Quay	Toronto	ON	City Park Paver with custom Series 3000 finish	80,000	MVVA	42
43	Miss Porter's School Administration Building	Farmington	CT	Town Hall / Richcliff / Rivercrest Wall	6,000	The Berkshire Design Group, Inc.	45
44	Pittsburgh Theological Seminary	Pittsburgh	PA	Richcliff	750	LaQuatra Bonci Associates	46
45	Newport Yachting Center	Newport	RI	Artline - Umbriano finish	17,000	Birchwood Design Group	47
46	Francis Street Parking Lot	Providence	RI	Tribeca Cobble	150	Hali Beckman Ltd.	48
47	Mohawk College	Hamilton	ON	Thornbury	15,000	IBI Group L.A.	49
48	Pier 27	Toronto	ON	Brussels Dimensional Paver / Umbriano / Il Campo	35,000	The MBTW Group	52
49	Western Illinois University	Moline	IL	Eco-Priora custom color	21,000	site	54
50	SKF Parking Lot	Warrenville	IL	Eco-Optiloc	96,000	Manhard Consulting	55
51	Casa Queretaro	Chicago	IL	Eco-Line - custom color	2,400	site	56
52	Navy Pier	Chicago	IL	Eco-Promenade with Series 3000 finish and colors	20,400	James Corner Field Operations	57
53	3rd Street	Bloomington	IL	Thornbury / Series 3000 / Il Campo	15,000	Christopher B Burke Engineering Ltd	57
54	East Burlington Street	Riverside	IL	Town Hall	18,000	Christopher B Burke Engineering Ltd	58
55	New York Botanical Gardens	Manhattan	NY	City Park Paver with custom Series 3000 finish	15,000	New York Botanical Gardens	58
56	Town Hall Square	Rotterdam	NL	Arcana			62
57	Central Park Zoo - Bear Exhibit	New York	NY	Rivenstone	3,000	Central Park Zoo	63
58	Chicago Roof Deck	Chicago	IL	Yorkstone	800	Chicago Green Design	64
59	Loews Hotel Roof Deck	Chicago	IL	Umbriano	20,000	Wolff Landscape Architecture, Inc.	67
60	Woodbury Commons	White Plains	NY	Lineo Dimensional System	30,000	Henon	72
61	Succo Cafe	Birmingham	MI	Rivercrest Wall	600	Risi Stone Inc.	73
62	Mill Street	Halton Hills	ON	Pisa2 / Concord Wall	1,500	Town of Halton Hills	74
63	Private Residence	Foxboro	MA	RomanWall / RomanPisa	2,800	Curbs, Inc	75
64	Roxbury Latin School	Roxbury	MA	SienaStone	5,000	Stantec Boston	76
65	Charles H. Wright Museum of African American History	Detroit	MI	DuraHold2	1,000	owner	77





# UNILOCK PROJECT SUPPORT

Take advantage of our years of industry leading expertise and unparalleled personal attention and collaboration, to ensure every intricate detail of your project runs smoothly. Our level of support is tailored to meet your needs, including:

- | Product customization
- | Budget pricing
- | Providing specifications, cross sections and details
- | Lunch and Learn continuing education credits
- | Samples
- | Outdoor Idea Centers





## CUSTOM OPTIONS

Every project is unique. We have the expertise, technology and capabilities to create just what you need. Talk to your local representative about combining the many shapes, finishes and colors offered by Unilock to create the ideal product for your project.

## UVISION® AND SAMPLES

Choosing the perfect product to complete your vision has never been easier. Our Uvision sample sheets are true-to-life-scale and color to help facilitate your initial product selection. And when the time comes to finalize your selections, your Unilock Representative will bring you all the real life samples you need.

## OUTDOOR IDEA CENTERS

Unilock's Outdoor Idea Centers provide you with the perfect places for inspiration and great destinations for client feedback. When you visit be sure to see, touch and experience all that Unilock has to offer and ask our knowledgeable team any questions you have.

## LUNCH AND LEARN

At Unilock, there is always something new. Ask your Unilock Representative about a Lunch and Learn session that also earns you valuable continuing education credits.

We're here to help through every step of your project. Talk to your Unilock Representative today to get all the details.



# INDEX



Academic and Healthcare.....	18
Application Chart.....	70
Arcana .....	62
Architectural Slabs .....	60
Artline™ .....	47
Bristol Valley™ .....	50
Brussels Block® .....	52
City Park Paver™ .....	42
City Park Paver™ Permeable .....	58
Color Options.....	33
Commercial Retail.....	6
Concord Wall™ .....	74
Copthorne®.....	44
Courtstone® .....	43
Custom Product Options .....	30
DuraHold® .....	77
DuraHold2® .....	77
Eco-Line™ .....	56
Eco-Optiloc™ .....	55
Eco-Priora™ .....	54
Eco-Promenade™ .....	57
EnduraColor™ & EnduraColor™ Plus.....	29
Finish Options.....	32
Golf Courses and Resorts.....	20
Heavy Duty and Parking Lots.....	22
Il Campo® .....	41
Jointing Compound Options .....	59
LEED .....	68
Lineo™ Dimensional Stone .....	72
Mattoni .....	51
Multifamily Housing.....	14
Nightec® .....	59
Offices.....	12
Parks and Recreation .....	8
Pedestal Systems .....	67
Permeable.....	24
Permeable Pavers .....	53
Photo Index.....	78
Pisa2® .....	74
Project Support.....	80
Promenade™ Plank Paver .....	36
Recycled Content.....	69
Retaining Walls.....	71
Richcliff® .....	46
Rivenstone™ .....	63
Rivercrest® Wall .....	73
Roof Decks .....	16
Roof Deck Installation Systems.....	66
Roof Deck Size & Finish Options.....	65
RomanPisa® .....	75
RomanWall® .....	75
Segmental Retaining Walls.....	26
Senzo™ .....	40
Series 3000® .....	38
SienaStone® .....	76
Size Options.....	31
Soreno .....	61
Streetscapes.....	4
Thornbury™ .....	49
Thornbury™ Permeable .....	57
Town Hall™ .....	45
Town Hall™ Permeable.....	58
Tribeca Cobble .....	48
Umbriano® .....	34
Unilock Technologies .....	28
Urban Plazas .....	10
Yorkstone™ .....	64





**PROJECT:** Chinatown Library. Chicago, IL  
**DESIGN:** site  
**PRODUCT:** Eco-Promenade™ - Smooth  
Premier finish



