

# ARCHITECTURAL SLABS FOR ROOF DECK SYSTEMS

TECHNICAL GUIDE



**UNILOCK**  
DESIGNED TO CONNECT.





**PRODUCT:** Umbriano® - Winter Marvel, French Grey, Midnight Sky  
**PROJECT:** City Square Parking Garage Roof Deck, Worcester, MA  
**DESIGNER:** CBA Landscape Architects LLC





# ROOF DECK SYSTEMS

Unilock® offers a wide variety of textures and finishes that complement any pedestal paver system or roof deck application. Roof deck hardscape systems act to protect the roof from the elements while providing additional usable space for gathering and entertaining in a unique outdoor setting.

With the many color, finish and size options available from Unilock, we will make your vision come to life.

- 3** Roof Deck Systems
- 4** Urban Terraces
- 5** Commercial Projects
- 6** General Overview
- 7** Quality Assurance
- 8** Large Format Pavers & Slabs
- 18** Natural Stone
- 19** Porcelain Tile
- 20** Wall Options
- 24** Wall Coping Options
- 26** Roof Deck Installation Systems



**PRODUCT:** Porcelain - Davinci Birch and Gotham Nero  
**PROJECT:** The Residences at 1111 Beacon St. Brookline, MA  
**DESIGNER:** Warner Larson Group

## URBAN TERRACES

In an urban environment, even the tiniest outdoor oasis can serve as a reprieve from bustling surroundings. However, tight lots can present a design challenge. Roof deck applications allow for more usage of space by providing functionality in an area that is often overlooked.

Unilock architectural slabs and retaining walls come in a wide selection of shapes, textures and colors designed to deliver high aesthetic impact and maximum function in hardscapes that are designed to complement their organic counterparts.





**PRODUCT:** Umbriano® Winter Marvel  
**PROJECT:** One Old Mill, Toronto, ON  
**DESIGNER:** Janet Rosenberg & Studio

## COMMERCIAL PROJECTS

Roof deck applications let you capitalize on previously unusable space to create a functional outdoor amenity area. The installation technologies behind suitable pavers for rooftops and pedestal systems are transforming elevated and sloped roof surfaces into outdoor amenities that are not only functional but aesthetically beautiful.

Transform existing unused roof spaces into functional outdoor amenity areas with Unilock products.

# GENERAL OVERVIEW

The full line of Unilock architectural roof deck slabs, pavers, natural stone slabs and porcelain tile offer many different finish and color options. Continue design themes from on-grade to rooftop applications creating a harmonious project between building site paving and outdoor spaces.

Unilock architectural slabs are offered in six thicknesses and range from 9 lbs/sqft to 48 lbs/sqft for various roof structural weight limits.



## SOLAR REFLECTANCE

Solar Reflectance Index (SRI) is a criterion used by USGBC that measures values of sunlight and reflectance from built surfaces. It is used to measure urban heat island effects in city centers. Dark pavement absorbs heat during the day and then releases it at night. This process creates a situation that causes urban centers to stay warmer all the time which contributes to air pollution and increased energy consumption. Careful selection of materials and colors can help reduce urban heat island effects.

Potential LEED® credits are available for products with an SRI greater than 33. Look for SRI values beside the color name within our product selection, where applicable.

## ARCHITECTURAL SLAB OPTIONS

Measurements shown in this catalog are meant for pedestal applications. The dimensions shown are taken from the side of the paver to the side of the paver. Consult your regional Product Data Resource Guide for locally stocked colors.

THICKNESS	PRODUCT TYPES	SHAPE	PRODUCT WEIGHTS
2cm	Porcelain Tile	600 x 600mm 400 x 800mm	9 lbs/sq.ft.
2.2cm	Natural Stone	600 x 900mm 600 x 600mm 450 x 600mm 300 x 600mm	11 lbs/sq.ft.
4.5cm	Rivenstone™ Yorkstone™	600 x 600mm 450 x 600mm 300 x 600mm	19 lbs/sq.ft.
5cm	+ Skyline™	600 x 600mm 606 x 606mm	24lbs/sq.ft.
6cm	Beacon Hill™ XL	900 x 540mm** 720 x 540mm**	27.5/sq.ft.
7cm	Umbriano® + Series™ + Il Campo® + Smooth Premier Finish	600 x 600mm 400 x 400mm 300 x 600mm	33 lbs/sq.ft.
10cm	+ Umbriano® + Series™ + Il Campo® + Smooth Premier Finish	600 x 600mm 400 x 400mm 300 x 600mm	48 lbs/sq.ft.

+ Special order only (verify locally manufactured finishes with your Unilock® Representative). \*\*Available in select markets. All sizes are nominal, please refer to finish page for actual face dimensions to establish grid spacing. Additional shapes are available, please contact your local Unilock Representative for more information.

# QUALITY ASSURED

Unilock manufacturing teams have an unrelenting commitment to shipping only top quality products. Our world-class production facilities are renowned for their safety and cleanliness and are staffed with the most experienced production people in the industry. Our continual investment in the most technologically advanced equipment ensures we're able to provide the best in product quality, consistency and style.



## UNILOCK PRODUCTS ARE

- | Tested from raw materials to finished product
- | Tested hourly for product density
- | Designed to meet all dimensional tolerances
- | Inspected by dedicated quality control staff
- | Meet and exceed industry quality standards (ASTM & CSA)
- | Durable and slip-resistant
- | Made with colorfast pigments
- | Resistant to salt erosion and chlorine

## TESTING SPECIFICATIONS

Unilock architectural roof deck slabs, natural stone and porcelain tile have been manufactured and quarried to meet and exceed ASTM and CSA standards. Contact your Unilock Representative for specific product results.

UNILOCK CONCRETE SLAB - MINIMUM STANDARDS					
Thickness	ASTM C140 Compressive Strength	ASTM C140 Water Absorption	ASTM C1645 Freeze/Thaw*	ASTM C1782 Flexural Strength	CSA 231.1 Flexural Strength
1¾"	8,500 PSI MIN.	5% MAX	<500 G/M2	>725 PSI AV.	>650 PSI MIN.
2"	8,500 PSI MIN.	5% MAX	<500 G/M2	>725 PSI AV.	>650 PSI MIN.
2¾"	8,500 PSI MIN.	5% MAX	<500 G/M2	>725 PSI AV.	>650 PSI MIN.
4"	8,500 PSI MIN.	5% MAX	<500 G/M2	>725 PSI AV.	>650 PSI MIN.

\* Results after 49 cycles

UNILOCK NATURAL SANDSTONE & LIMESTONE - UNILOCK TESTED (MINIMUM STANDARDS)			
Thickness	ASTM C170 Compressive Strength*	ASTM C97 Water Absorption by weight	ASTM C99 Flexural Strength*
¾"	>25,000 (4,000 MIN.) PSI	<1.4% (3-12% MAX.- LIMESTONE) <0.2% (3-8% MAX.- SANDSTONE)	(350 PSI MIN.)

\* Tested dry

UNILOCK PORCELAIN TILE - MINIMUM STANDARDS				
Thickness	ASTM C373 Water Absorption	ASTM C1026 Freeze/Thaw	ASTM C648 Breaking Strength	ANSI 137.1 Slip Resistance
¾"	-0.1%	Resistant	≥ 3400 LBS	≥ 0.60

ASTM - American Society of Testing and Materials    CSA - Canadian Standards Association    ANSI - American National Standards Institute





# ARCANA

**ENDURACOLOR™**  
PLUS ARCHITECTURAL FINISHES



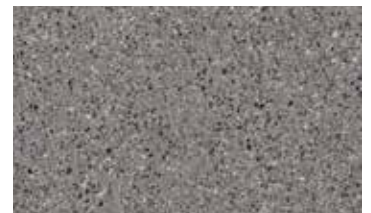
Lugano



Modena (SRI 53)



Corvara



Vivanto



23 $\frac{3}{8}$  x 23 $\frac{3}{8}$  x 2"  
606 x 606 x 50mm

*Ideal for Pedestals*



17 $\frac{1}{8}$  x 23 $\frac{3}{8}$  x 2"  
453.5 x 606 x 50mm



11 $\frac{1}{8}$  x 23 $\frac{3}{8}$  x 2"  
301 x 606 x 50mm

## TECHNICAL ADVANTAGES

### EASYSOFT™ STAIN RESISTANCE

Factory sealed to provide integral surface protection from stains





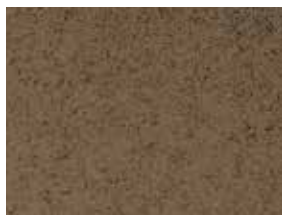
**PRODUCT:** Umbriano - Winter Marvel  
**PROJECT:** 1035 W VanBuren, Chicago, IL  
**DESIGNER:** site | site design group, ltd.

# UMBRIANO®

**ENDURACOLOR®**  
**PLUS** ARCHITECTURAL FINISHES



Summer Wheat (SRI 48)



Harvest Brown



French Grey



Winter Marvel (SRI 38)



Midnight Sky



Skyline™ Umbriano  
 23 1/8 x 23 1/8 x 2" \*  
 606 x 606 x 50mm\*  
*Ideal for Pedestals*



Skyline Umbriano  
 23 1/2 x 23 1/2 x 2" \*  
 600 x 600 x 50mm\*



23 1/2 x 23 1/2 x 2 3/4 or 4" \*  
 600 x 600 x 70 or 100mm\*



15 x 15 x 2 3/4 or 4" \*  
 400 x 400 x 70 or 100mm\*



11 x 23 1/2 x 2 3/4 or 4" \*  
 300 x 600 x 70 or 100mm\*

## TECHNICAL ADVANTAGES

### EASYSOFT™ STAIN RESISTANCE

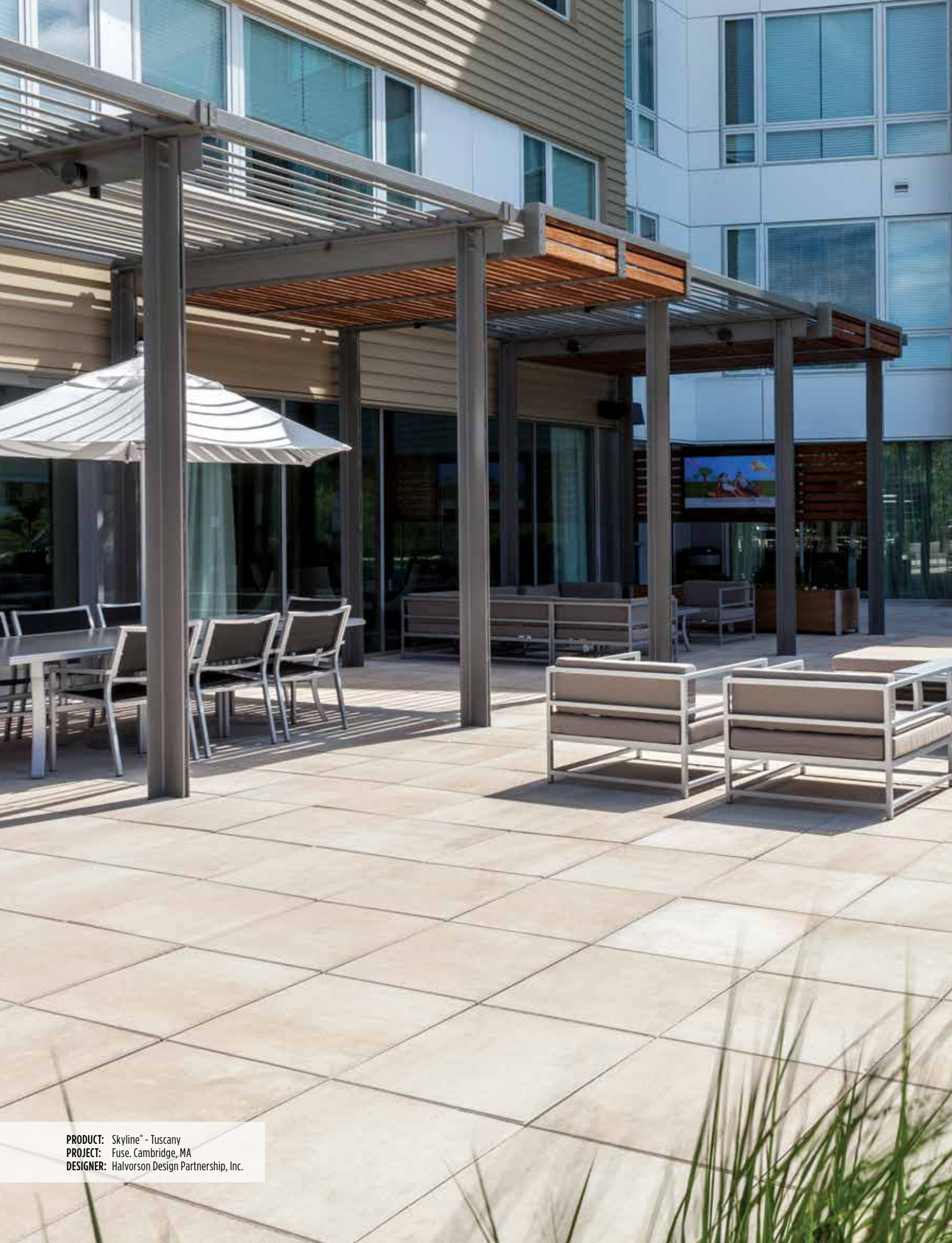
Factory sealed to provide integral surface protection from stains

### COLORFUSION™ TECHNOLOGY

Subtly mottled color finish

Consult your regional Product Data Resource Guide for locally stocked colors. Additional Special Order colors available.  
 \*Special Order, please contact your local Unilock Representative for availability and available custom options.





**PRODUCT:** Skyline™ - Tuscany  
**PROJECT:** Fuse, Cambridge, MA  
**DESIGNER:** Halvorson Design Partnership, Inc.



# SKYLINE™ SLAB

## SMOOTH PREMIER FINISH SPECIAL ORDER

**ENDURACOLOR™**

Ask about adding  
**EASYCLEAN™ STAIN RESISTANCE**  
to the Skyline Smooth Premier Slab



Light Buff\*



Medium Grey\*

\*Stock in select regions



White



Natural



Charcoal



Sandstone



Caramel  
SS0076



Muted Brown  
SS0075



Brown

## SERIES™ FINISH SPECIAL ORDER

**ENDURACOLOR™**  
**PLUS** ARCHITECTURAL FINISHES



Black Granite



Crystalline Basalt



Crystal Rose



Golden Tan  
(SRI 45)



Ice Grey  
(SRI 38)



Mineral Ice Grey  
(SRI 33)



Mocha Brown

## UMBRIANO® FINISH SPECIAL ORDER

**ENDURACOLOR™**  
**PLUS** ARCHITECTURAL FINISHES



Summer Wheat  
(SRI 48)



Autumn Sunset  
(SRI 32)



Harvest Brown



Grenada White



Winter Marvel  
(SRI 38)



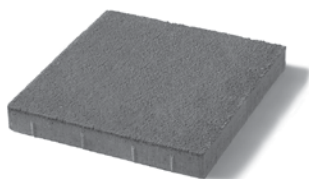
French Grey



Midnight Sky



Summer Rose



23½ x 23½ x 2"  
606 x 606 x 50mm  
*Ideal for Pedestals*



23½ x 23½ x 2"  
600 x 600 x 50mm





**PRODUCT:** Skyline™ - Series™ finish - Mineral Ice Grey  
**PROJECT:** Kemper Lakes Business Center, Lake Zurich, IL  
**DESIGNER:** BrightView Landscapes, LLC

# SERIES™

**ENDURACOLOR™**  
**PLUS** ARCHITECTURAL FINISHES



Black Granite



Crystalline Basalt



Crystal Rose



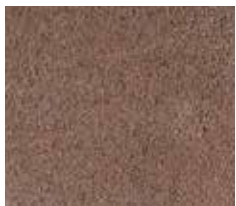
Golden Tan (SRI 45)



Ice Grey (SRI 38)



Mineral Ice Grey (SRI 33)



Mocha Brown - Chicago



Mocha Brown - New York



Mountain Mist (SRI 29)



Onyx Black



Peppered Granite

## TECHNICAL ADVANTAGES

Granite, Quartz and Marble surface materials.



Skyline™ Series  
 23 $\frac{7}{8}$  x 23 $\frac{7}{8}$  x 2"  
 606 x 606 x 50mm  
*Ideal for Pedestals*



Skyline Series  
 23 $\frac{1}{2}$  x 23 $\frac{1}{2}$  x 2"  
 600 x 600 x 50mm



23 $\frac{1}{2}$  x 23 $\frac{1}{2}$  x 2 $\frac{3}{4}$  or 4"  
 600 x 600 x 70 or 100mm



11 $\frac{1}{16}$  x 23 $\frac{1}{2}$  x 2 $\frac{3}{4}$  or 4"  
 300 x 600 x 70 or 100mm





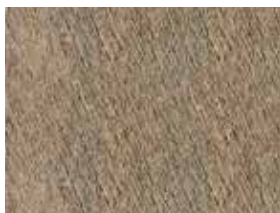
**PRODUCT:** Il Campo - Granite Blend  
**PROJECT:** Cornell Community Centre, Markham, ON  
**DESIGNER:** The MBTW Group

# IL CAMPO®

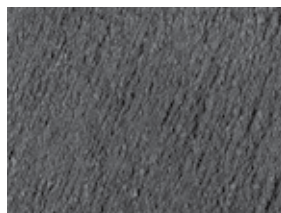
**ENDURACOLOR™**



Bavarian Blend



Coffee Creek



Dark Charcoal



Granite Blend



Heritage Brown



Mocha



Oakwood



River



Santa Fe



Sierra



23½ x 23½ x 2¾ or 4"  
 600 x 600 x 70 or 100mm

## TECHNICAL ADVANTAGES

### BRUSHED FINISH

Graphically interesting etched lines

Consult your regional Product Data Resource Guide for locally stocked colors. Additional Special Order colors available.  
 Il Campo 24 x 24" is special order; please contact your local Unilock Representative for availability and available custom options.





PRODUCT: Beacon Hill XL - Opal  
PROJECT: Private Residence



# BEACON HILL™ FLAGSTONE XL

ENDURACOLOR™



Almond Grove



Alpine Grey



Bavarian



Birch



Coffee Creek



Fossil



New York Blend



Platinum



River



Sierra



Slate Blue



Steel Mountain



Sycamore



Tuscany



Walnut

# BEACON HILL™ SMOOTH XL

ENDURACOLOR™



Almond Grove Fusion



Bavarian



Birch



Copper Ridge



Fossil



Granite



Granite Fusion



Oak Brown Fusion



Opal Blend



Sierra



Sierra Fusion



Steel Grey



Steel Mountain



Tuscany



XL Rectangle  
21 x 35 x 2<sup>3</sup>/<sub>8</sub>"  
540 x 900 x 60mm



ONTARIO ONLY - XL Rectangle  
21 x 28 x 2<sup>3</sup>/<sub>8</sub>"  
540 x 720 x 60mm





**PRODUCT:** Rivenstone - Bluestone  
**PROJECT:** Central Park Zoo, Manhattan, NY  
**DESIGNER:** Central Park Zoo

# RIVENSTONE™

STONEMARK™



Bluestone



Canyon



Sahara



23½ x 30 x 1¾"  
 600 x 760 x 45mm



23½ x 23½ x 1¾"  
 600 x 600 x 45mm



17½ x 23½ x 1¾"  
 450 x 600 x 45mm



11½ x 23½ x 1¾"  
 300 x 600 x 45mm

## TECHNICAL ADVANTAGES

### REALA™ TECHNOLOGY

Cast from historic brick, cobble and stone





**PRODUCT:** Yorkstone - Iron River  
**PROJECT:** Private Roof Deck, Chicago, IL  
**DESIGNER:** Chicago Green Design

# YORKSTONE™

**STONEMARK™**



Honey Gold



Iron River (SRI 61)



23½ x 23½ x 1¾"  
600 x 600 x 45mm



17½ x 23½ x 1¾"  
450 x 600 x 45mm



11½ x 23½ x 1¾"  
300 x 600 x 45mm

## TECHNICAL ADVANTAGES

### REALA™ TECHNOLOGY

Cast from historic brick, cobble and stone

*Consult your regional Product Data Resource Guide for locally stocked colors.*





**PRODUCT:** Natural Stone - Black River  
**PROJECT:** 99 Davisville, Toronto, ON  
**DESIGNER:** Deltterra Construction

# NATURAL STONE



**Autumn Harvest (SRI 33)**  
 Sandstone  
 Natural Cleft Edge



**Indian Coast (SRI 55)**  
 Sandstone  
 Sawn Edge



**Winter Mist (SRI 27)**  
 Limestone  
 Sawn Edge



**Stone Cliff Grey (SRI 28)**  
 Sandstone  
 Natural Cleft Edge



**Black River (SRI 4)**  
 Limestone  
 Sawn Edge



23% x 35 1/2 x 7/8"  
 600 x 900 x 22mm



23% x 23% x 7/8"  
 600 x 600 x 22mm



17 3/4 x 23% x 7/8"  
 450 x 600 x 22mm



11% x 23% x 7/8"  
 300 x 600 x 22mm



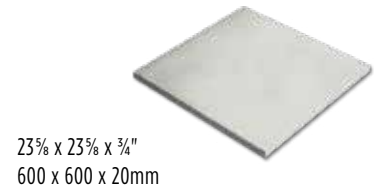


**PRODUCT:** Porcelain - Gotham Nero  
**PROJECT:** 3033 N. Clark, Chicago, IL  
**DESIGNER:** Owner

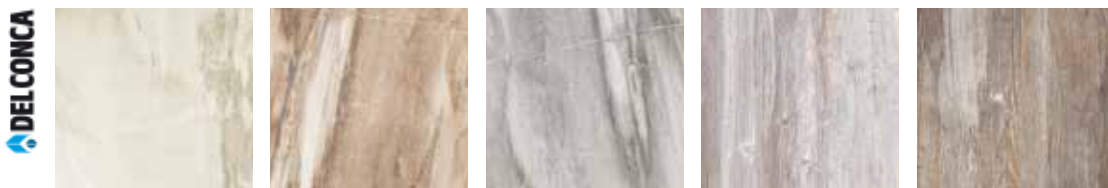
# PORCELAIN TILE



Travstone Beige    Travstone Noce    Gotham Beige    Gotham Grey    Gotham Nero



23 $\frac{3}{8}$  x 23 $\frac{3}{8}$  x  $\frac{3}{4}$ "  
 600 x 600 x 20mm



Epokal Beige    Epokal Beige Scuro    Epokal Grey    DaVinci Birch    DaVinci Driftwood



Epokal Only  
 15 $\frac{3}{4}$  x 31 $\frac{1}{2}$  x  $\frac{3}{4}$ "  
 400 x 800 x 20mm



Beola Bianca    Graustein    Golden Stone    Eikon Gae    Eikon Titanio



23 $\frac{1}{2}$  x 23 $\frac{1}{2}$  x  $\frac{3}{4}$ "  
 600 x 600 x 20mm

Consult your regional Product Data Resource Guide for locally stocked colors.





# U-CARA™ WALL



**LOOK INSIDE!**  
 U-Cara fascia panels hang easily on the patented **Sure Track™** backer block.



Sure Track  
 Standard Backer  
 6 x 8 x 6"  
 150 x 200 x 150mm



Sure Track  
 Large Backer  
 6 x 8 x 12"  
 150 x 200 x 300mm



Standard Fascia Panel  
 6" x 18 3/8" x 2 5/16"  
 150 x 466 x 60mm



Standard Fascia  
 Half Panel  
 6 x 9 7/16 x 2 5/16"  
 150 x 233 x 60mm



Closed-End Fascia Panel  
 6" x 20 7/8" x 2 5/16"  
 15 x 530 x 60mm



Universal Coping  
 2 3/4 x 19 x 14"  
 70 x 482 x 355mm



Universal Base Unit  
 2 x 19 x 14"  
 55 x 482 x 355 mm

CORNER BUNDLE



# U-CARA DESIGN PALETTE

U-Cara fascia panels are available in a variety of colors and textures, which include exclusive **Unilock® EnduraColor finishes.**

## UMBRIANO® FACE



FRENCH GREY



WINTER MARVEL



MIDNIGHT SKY



SUMMER WHEAT



HARVEST BROWN

## SERIES™ FACE



BLACK GRANITE



PEPPERED GRANITE

## PITCHED FACE



ALMOND GROVE FUSION



BAVARIAN



GRANITE FUSION



OPAL BLEND



RIVER



SIERRA



STEEL GREY



STEEL MOUNTAIN

## SMOOTH PREMIER FACE



ALMOND GROVE FUSION



BAVARIAN



CREAM



GRANITE FUSION



GRAPHITE



OPAL BLEND



SIERRA



TUSCANY

### TECHNICAL ADVANTAGES

**ENDURACOLOR™**  
PLUS ARCHITECTURAL FINISHES

Refined surface and long-lasting color

### EASYCLEAN™ STAIN RESISTANCE

Factory sealed to provide integral surface protection from stains

### COLORFUSION™ TECHNOLOGY

Subtly mottled color finish

### TECHNICAL ADVANTAGES

**ENDURACOLOR™**  
PLUS ARCHITECTURAL FINISHES

Refined surface and long-lasting color

Granite, Quartz and Marble surface materials.

### TECHNICAL ADVANTAGES

**ENDURACOLOR™**

Refined surface and long-lasting color

### TECHNICAL ADVANTAGES

**ENDURACOLOR™**

Refined surface and long-lasting color





# RIVERCREST® WALL



Buff



Coastal Slate

### TECHNICAL ADVANTAGES

#### REALA™ TECHNOLOGY

Cast from historic brick, cobble and stone

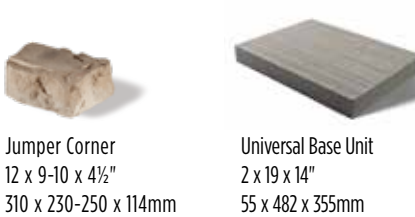
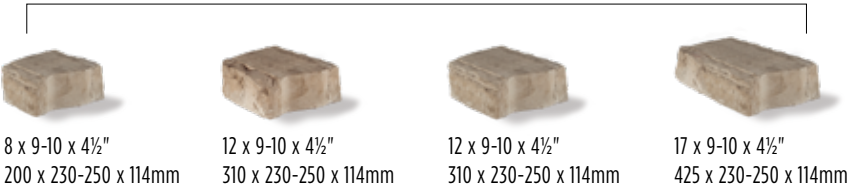
#### RANDOM WALL BUNDLE



#### CORNER BUNDLE



#### JUMPER WALL BUNDLE



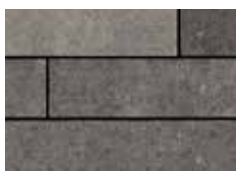




# LINEO™ DIMENSIONAL WALL



Almond Grove



Granite Blend



Limestone



Mahogany Ash



Midnight Charcoal



Platinum



Sandalwood



Sandstone



Sierra



Sierra - Chicago



Walnut

## RANDOM WALL BUNDLE



12 x 4 x 8"  
300 x 100 x 200mm



16 x 4 x 8"  
400 x 100 x 200mm



20 x 4 x 8"  
500 x 100 x 200mm



24 x 4 x 8"  
600 x 100 x 200mm



Pillar Unit  
16 x 4 x 8"  
400 x 100 x 200mm



Universal Base Unit  
2 x 19 x 14"  
55 x 482 x 355mm

Consult your regional Product Data Resource Guide for locally stocked colors. For coping options, we recommend Ledgestone™ or Natural Stone from Unilock®; see page 24 for more information.





# WALL COPING OPTIONS

LEDGESTONE™



Buff



Grey

## TECHNICAL ADVANTAGES

### REALA™ TECHNOLOGY

Cast from historic brick, cobble and stone



Coping Unit  
12 x 24 x 2 3/4"  
305 x 610 x 75mm



Fullnose Unit  
12 x 24 x 1 3/4"  
305 x 610 x 45mm

NATURAL STONE



Indian Coast



Autumn Harvest



Stone Cliff Grey



Black River



Natural Edge Coping Unit  
12 x 48 or 72 x 2"  
300 x 1200 or 1820 x 50mm

16 x 48 or 72 x 2"  
400 x 1200 or 1820 x 50mm



Fullnose Coping Unit  
12 x 48 or 72 x 2"  
200 x 1200 or 1820 x 50mm







**PRODUCT:** Umbriano® - Summer Wheat and Series™ - Onyx Black  
**PROJECT:** Hubbard Place, Chicago, IL  
**DESIGNER:** Daniel Weinbach & Partners, Ltd.



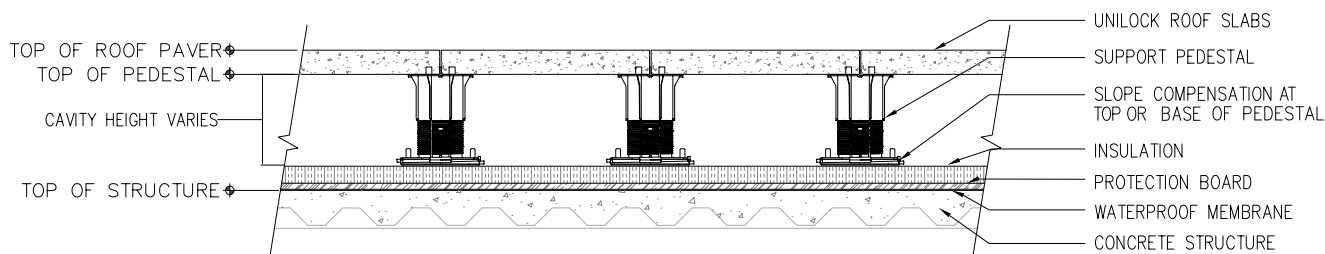
# ROOF DECK INSTALLATION SYSTEMS

The cross sections below are examples of the type of installation system and technical features of Unilock products. Unilock shall not be deemed responsible for improper use of the product or of damage deriving from any use different from those recommended and/or installation procedures not in line with the following instructions relevant to a raised installation.

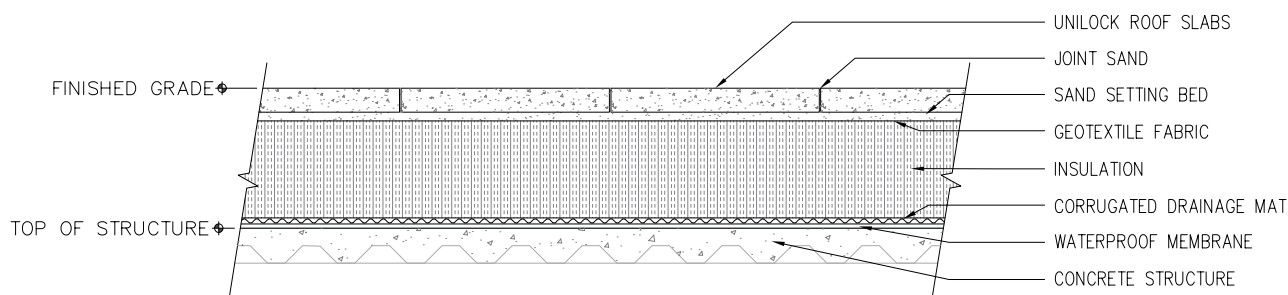
**All roof top slab/pedestal installations must be engineered by a professional engineer.**

## PEDESTAL SYSTEM

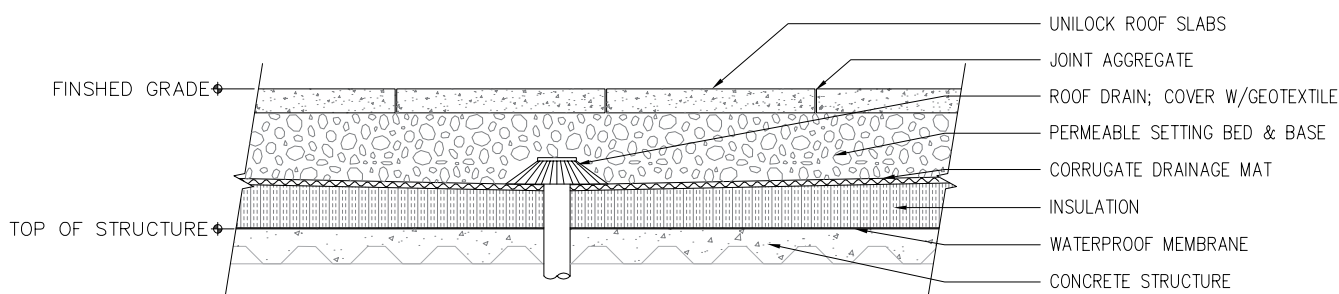
Unilock offers adjustable and stackable pedestal systems for your project. Contact your Unilock Representative to learn more. Specific installation details may vary based on pedestal height, load-bearing requirements, safety standards and wind-lift.



## SAND SET WITH DRAINAGE MAT AND INSULATION

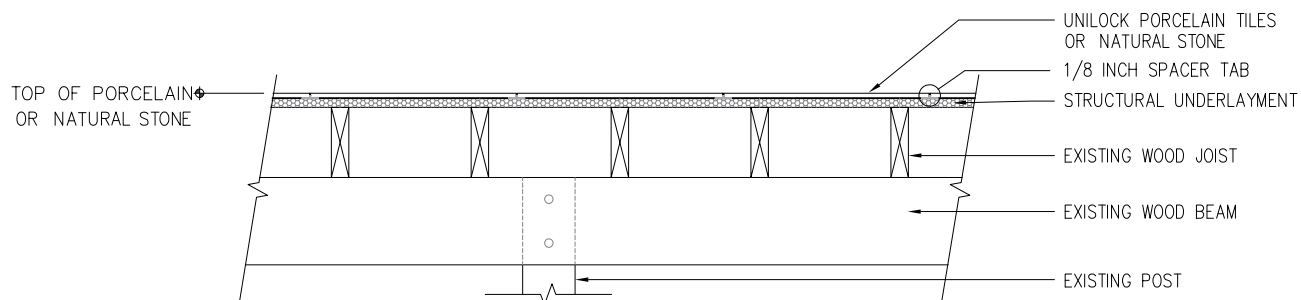


## GRANULAR BASE SYSTEM



## DECK RETROFIT SYSTEM

Unilock offers structural underlayment systems for your project. Contact your Unilock Representative to learn more.







©Tim Benson 2015

**PRODUCT:** Umbriano® - Winter Marvel  
**PROJECT:** Private Office, Chicago, IL  
**DESIGNER:** Wolff Landscape Architecture





**UNILOCK**<sup>®</sup>

DESIGNED TO CONNECT.

UNILOCK.COM | 1-800-UNILOCK

---

BOSTON (508) 278-4536	BUFFALO (716) 822-6074	CHICAGO (630) 892-9191	KANSAS CITY (913) 417-7984
CLEVELAND (330) 927-4000	DETROIT (248) 437-7037	MILWAUKEE (262) 742-3890	NEW YORK (845) 278-6700
MID-ATLANTIC (202) 798-2060	TORONTO (416) 646-9000		

©2018 Hengestone Holdings, Inc.

Fairstone is a trademark of Marshalls PLC.  
By permission of Ceramiche Caesar S.p.A. Via Canaletto 49, 41040 Spezzano di Fiorano (Mo), Italy, which is  
the sole proprietor of the trademark and some of the images in this catalog.