



UNILOCK[®]
DESIGNED TO CONNECT.™

ARCHITECTURAL PAVEMENTS AND RETAINING WALLS



BRINGING YOUR VISION TO LIFE

Designed and installed in some of the most prestigious commercial spaces in North America, Architects, Landscape Architects and Engineers trust Unilock to bring their architectural vision to life and to withstand the toughest rigor of a commercial environment.

ARCHITECT & LANDSCAPE ARCHITECT: Ross Barney Architects





McDONALD'S CHICAGO FLAGSHIP

The new Chicago Flagship celebrates the pure simplicity and enduring authenticity of McDonald's, welcoming both residents and visitors to a playful and informal gathering place in the heart of the city.

The site is a full city block, just steps off Michigan Avenue, occupied since 1983 by the iconic "Rock 'n Roll" McDonald's. The new design rebalances car-pedestrian traffic creating a city oasis where people can eat, drink and meet. Landscape area was increased to include an expansive pedestrian-centric space, a restaurant in a civic plaza with outdoor seating, park area and more than 70 trees as well as native and drought resilient plants throughout.

McDonald's corporate commitment to sustainability is at the core of the new restaurant design. One of the many design elements is the permeable paving used throughout the site to reduce stormwater runoff and the heat island effect. The paving used in sidewalks, entrances and areas adjacent to the building use the 3 x 12" Plank Permeable Paver with special order Series™ finish designed to handle vehicular and pedestrian loads while the Eco-Line® multi-unit platform with a Smooth Premier finish handles the demands of the drive-thru lanes and parking lot. The restaurant is applying for LEED certification.



APPLICATIONS

OFFICES

Successful commercial design incorporates elements which enhance a company's brand image and the building's architectural style. Linear patterns, color and texture are used to encourage flow and create stunning visual effects without compromising function. The wide range of Unilock sizes and styles allow you to create just the right look and feel.

TOP LEFT

PROJECT: IBEW Local 134. Chicago, IL
DESIGN: Wolff Landscape Architecture
PRODUCT: 6 x 24" with Smooth Premier finish in Opal, Steel Grey and Chamois

TOP RIGHT

PROJECT: Northwest Corporate Park. Burlington, MA
DESIGN: Michael D'Angelo Landscape Architecture LLC
PRODUCT: 4 x 8" with Series™ and Il Campo® finishes in Mineral Ice Grey and Granite



PROJECT: Vineyard Worship Center. Columbus, OH



PROJECT: Corporate Campus. Schaumburg, IL



PROJECT: National Comedy Center. Jamestown, NY



APPLICATIONS

ACADEMIC & HEALTHCARE

The high-traffic demands of academic and healthcare applications require products that perform. Unilock® EnduraColor™ Architectural Finishes give you the confidence that you are choosing beauty that will stand the test of time. These surfaces offer the most extensive selection of colors, textures and sizes, enabling you to bring life to your unique vision for the space.

TOP LEFT

PROJECT: Rowan College at Burlington County.
Mount Laurel, NJ
DESIGN: Sikora Wells Appel
PRODUCT: 12 x 24" with Umbriano® finish in French Grey and Winter Marvel

TOP RIGHT

PROJECT: DePaul School of Music. Chicago, IL
DESIGN: Antunovich Associates
Wolff Landscape Architecture
PRODUCT: 4 x 12" Plank with Series™ finish in Coral Gem



PROJECT: New Trier High School. Winnetka, IL



PROJECT: University of Pittsburgh. Pittsburgh, PA



PROJECT: William M. Meredith School. Philadelphia, PA



APPLICATIONS

COMMERCIAL RETAIL

In commercial environments, Unilock pavers and retaining walls offer a wide range of design solutions. Whether you are working with our standard product palette or taking advantage of our extensive custom capabilities, you will have the right products to bring your vision to life. Adding atmosphere, scale, flow and harmony, you will have the selection you need to meet your design objectives.

TOP LEFT

PROJECT: Clarksburg Premium Outlets.
Clarksburg, MD

DESIGN: Simon Group / Terraplan Landscape Architects
PRODUCT: Artline™ Platform with Smooth Premier finish in Steel Mountain

TOP RIGHT

PROJECT: Grand Island Welcome Center.
Grand Island, NY

DESIGN: Stantec Rochester
PRODUCT: 8 x 16" Rectangle with Umbriano® finish in Autumn Sunset and Summer Wheat



PROJECT: Linear Park, Assembly Row. Somerville, MA



PROJECT: Suburban Square. Ardmore, PA



PROJECT: Bow Market. Somerville, MA



APPLICATIONS

GOLF COURSES & RESORTS

Creating a relaxing retreat, ensuring harmony with the natural surrounding, conveying the excitement and energy of the city or evoking the resort's world-class brand image, are all statements of your design and Unilock has the right product for each setting. Stunning architectural finishes and color options provide you with the opportunity to design what hasn't been designed before.

TOP LEFT

PROJECT: Niagara Falls Country Club. Lewiston, NY
DESIGN: Villani Landscape
PRODUCT: Richcliff® and Rivercrest® Wall

TOP RIGHT

PROJECT: Mistwood Golf Club. Romeoville, IL
DESIGN: James and Todd Mcwethy
PRODUCT: Bristol Valley®



PROJECT: Bishops Bay Country Club. Middleton, WI



PROJECT: Residence Inn by Marriott. Columbus, OH



PROJECT: Valley Lo Club. Glenview, IL



APPLICATIONS

STREETSCAPES

Creating urban centers with visual appeal and style, while reflecting the character of the town or city, demands the right products to capture the spirit of the space. Our extensive range of exclusive textures, colors and sizes allow you to explore the design diversity required with products that will stand up to the application. High-traffic roads require heavy-duty paving and with Unilock, using the right unit paver can make a powerful impression.

TOP LEFT

PROJECT: Plymouth Rock. Plymouth, MA
DESIGN: BETA Group Inc.
PRODUCT: Town Hall® Special Order Color

TOP RIGHT

PROJECT: The Beverly
DESIGN: Land Art Design
PRODUCT: 5 x 10" Permeable Eco-Priora™ with Il Campo® finish in Santa Fe and Squares/Rectangles with Umbriano® finish in Winter Marvel/Midnight Sky



PROJECT: Wauwatosa Streetscape. Wauwatosa, WI



PROJECT: Downtown Belleville. Belleville, ON



PROJECT: Wharf District. Washington, DC



APPLICATIONS

PARKS & RECREATION

Seamlessly complement the beauty of gardens, fountains and other natural or man-made design elements, with the confidence that the paving material you select will stand up to the rigor of its environment. Unilock products offer advanced surface technologies that deliver a variety of benefits including stain resistance and easy cleaning properties. This makes them an ideal choice for high-traffic pedestrian areas.

TOP LEFT

PROJECT: Playground 52. Bronx, NY
DESIGN: New York City Parks Department
PRODUCT: Hex with Umbriano® finish in Summer Wheat

TOP RIGHT

PROJECT: Indianapolis Motor Speedway, Indianapolis, IN
DESIGN: Browning Day Mullins Dierdorf
PRODUCT: 3 x 12" Permeable Plank with Series™ finish in Special Order Colors



PROJECT: Little Caesars Arena. Detroit, MI



PROJECT: Veterans Square & Cenotaph. Markham, ON



PROJECT: Humber Bay Shores Park. Toronto, ON



APPLICATIONS

URBAN PLAZAS

For centuries, Europeans have been gathering in public squares for farmers' markets, community events and entertainment. This tradition continues in modern day North America with citizens drawn to public spaces to relax or catch up with friends. The extensive collection of Unilock styles, colors and textures provides infinite design choices to reflect the surrounding environment and to bring a sense of community to any urban outdoor space.

TOP LEFT

PROJECT: Fountain Square. Evanston, IL
DESIGN: Teska Associates, Inc.
PRODUCT: 3 x 12" Permeable Plank with Umbriano® finish in Grenada White, Winter Marvel and French Grey

TOP RIGHT

PROJECT: 135 Yorkville Avenue. Toronto, ON
DESIGN: Janet Rosenberg & Studio
PRODUCT: 8 x 16" with Umbriano® finish in Winter Marvel and Midnight Sky



PROJECT: Glassboro Town Square. Glassboro, NJ



PROJECT: Southwest Block 12 Park. Hoboken, NJ



PROJECT: DPD Resilient Corridors Site 7. Chicago, IL



APPLICATIONS

MULTI-FAMILY HOUSING

Inviting outdoor spaces are essential in every multi-family development. Using a variety of textures, colors and sizes, you can create spaces that are flexible, serving a full range of activities to encourage socialization, yet offer solitude. Taking advantage of the site's exposure to sun, air and views, you can create a journey through the courtyard's social and private, open and secluded, active and passive spaces.

TOP LEFT

PROJECT: Muse Condo. Toronto, ON
DESIGN: The Planning Partnership
PRODUCT: 4 x 4" and 4 x 8" with Smooth Premier finish in Special Order Colors

TOP RIGHT

PROJECT: Edge 1909 Apartments. Pittsburgh, PA
DESIGN: PVE
PRODUCT: Artline™ Platform with Smooth Premier finish in Platinum



PROJECT: Laguna Apartments. Jersey City, NJ



PROJECT: Soho Lofts. Jersey City, NJ



PROJECT: Sixth Street Mews. Columbus, OH



APPLICATIONS

ROOF DECKS

The opportunity to reclaim a functional space and turn it into an attractive destination has never been more timely. Unilock offers a full line of architectural roof deck pavers and slabs with the same great finishes used for on-grade applications. This makes it easier than ever to create harmony between the building's outdoor space and the site paving.

TOP LEFT

PROJECT: One York. Toronto, ON
DESIGN: The NAK Design Group
PRODUCT: 8 x 16" with Umbriano® finish in Winter Marvel, 4 x 8" Il Campo® finish in Granite Blend

TOP RIGHT

PROJECT: The Huntington. Burlington, MA
DESIGN: BSC Group
PRODUCT: Beacon Hill™ with Smooth Premier finish in Steel Mountain



PROJECT: One East Delaware. Chicago, IL



PROJECT: 99 Tremont @ Oak Square. Brighton, MA



PROJECT: Lothrop Hall, Univ. of Pittsburgh. Pittsburgh, PA



APPLICATIONS

PERMEABLE

Environmentally conscious product choices are more in demand than ever. Over the last 25 years, Unilock has developed an extensive collection of innovative products for environmental concerns such as stormwater management. Now rainwater harvesting and water quality concerns can be alleviated by designing in style with beautiful colors and textures, while promoting sustainability.

TOP LEFT

PROJECT: McDonald's Chicago Flagship. Chicago, IL
DESIGN: Ross Barney Architects
PRODUCT: Eco-Line® Platform with Smooth Premier finish in Granite Fusion

TOP RIGHT

PROJECT: LC New Albany. New Albany, OH
DESIGN: Lifestyle Communities Columbus
PRODUCT: Eco-Optiloc™ Standard finish in Rustic Red



PROJECT: Westmont Alleyways. Westmont, IL



PROJECT: Bentley University Arena. Waltham, MA



PROJECT: Holy Trinity School. Richmond Hill, ON



APPLICATIONS

HEAVY-DUTY & PARKING LOTS

For maximum performance where load capacity, truck and trailer (H-20 & HS-20) loading or everyday vehicular traffic are factors, Unilock can provide you with the right products. Heavy-duty pavers are available in traditional and permeable versions, in standard finishes as well as custom color and finish options to ensure that your design vision is achieved.

TOP LEFT

PROJECT: Glen Ellyn Streets. Glen Ellyn, IL
DESIGN: RHMG Engineers
PRODUCT: Town Hall®

TOP RIGHT

PROJECT: Mount Lebanon High School. Pittsburgh, PA
DESIGN: Werley Associates
PRODUCT: Eco-Optiloc™ with Standard finish in Limestone



PROJECT: Athletic & Recreation Center. Woodridge, IL



PROJECT: Jay Stream Middle School. Carol Stream, IL



PROJECT: Park Place. Geneva, IL



APPLICATIONS

SEGMENTAL RETAINING WALLS

Unilock has the right wall for every design scenario; from hand-installed to machine-set, from 2 feet to 40 feet high, we have products to meet the demands of your design. Speak with your Unilock Representative to explore the possibilities.

TOP LEFT

PROJECT: The Huntington. Burlington, MA
DESIGN: BSC Group
PRODUCT: Concord Wall™ XL/Pisa® XL in Almond Grove

TOP RIGHT

PROJECT: Lotus Condominiums. Toronto, ON
DESIGN: Terraplan Landscape Architects
PRODUCT: U-Cara® Wall with Umbriano® finish in Winter Marvel



PROJECT: Second Street. Geneva, IL



PROJECT: Victor Crossing. Victor, NY



PROJECT: Rosina Foods. Buffalo, NY

UNILOCK TECHNOLOGIES

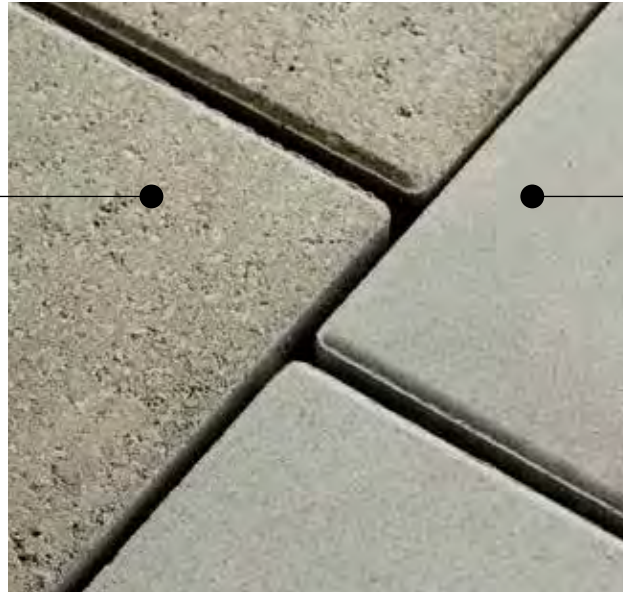
Unilock is the **only company** in North America with memberships in Eurobeton and Stein + Design, two **prestigious European** concrete product innovation groups, which give us exclusive access to leading edge product designs and manufacturing processes.



UNILOCK QUALITY GUARANTEED

CLASSIC

Our budget-friendly, Unilock Classic pavers and walls are manufactured to exceed ASTM standards for quality and strength. Available in classic shapes and styles, these products utilize a traditional **product mix of large and small aggregates**, that's consistent from top to bottom, with color mixed throughout.



ENDURACOLOR™

The refined surface of Unilock Enduracolor products is achieved with a **two-step manufacturing process** that combines a base of coarser aggregates for a **stronger foundation**, with concentrated color and **wear-resistant finer aggregates on top**. This process protects the surface from the appearance of fading over time because the top layer prevents large, lighter color aggregates from ever showing through.

ENDURACOLOR™ ARCHITECTURAL FINISHES

ONLY UNILOCK OFFERS ENDURACOLOR ARCHITECTURAL FINISHES.

These products set a new standard for everlasting beauty thanks to proprietary blends of some of nature's highest performing minerals such as granite and quartz, combined with manufacturing technologies that are exclusive to Unilock.



EXCLUSIVE UNILOCK TECHNOLOGIES

REALA™

A multitude of natural stone surfaces, brick and historic cobblestones were cast to create Unilock products utilizing Reala technology. The result is a wide variety of authentic textures with consistent dimensions which are more cost efficient to install.



REALA TECHNOLOGY PRODUCTS:
COPTHORNE®, COURTSTONE®, RICHCLIFF®, RIVERCREST® WALL AND TOWN HALL®

ULTIMA™

Only Unilock has the technology to manufacture Ultima Concrete here in North America, resulting in pavers and walls with up to four times the strength of poured concrete.

Unilock Town Hall pavers are built to last

Deteriorating clay brick pavers exposed to deicing salt



ULTIMA CONCRETE TECHNOLOGY PRODUCTS:
COPTHORNE®, COURTSTONE®, RICHCLIFF® AND TOWN HALL®

COLORFUSION™

Color and granite particles are randomly dispersed using proprietary ColorFusion technology to achieve a unique mottled surface that resembles natural granite.



COLORFUSION TECHNOLOGY PRODUCTS:
UMBRIANO® AND U-CARA®

EASYCLEAN™

Unlike after-market sealers which merely coat the top, EasyClean goes beyond the surface and becomes integral to the product during manufacturing. The result is enhanced surface color and protection from stains.

EASYCLEAN STAIN RESISTANCE PRODUCTS:
ARCANA, SENZO™ AND UMBRIANO®

There are two Clean Factors (CF®) to choose from:

CLEAN FACTORS (CF)	CF 90	CF 100
Pavers are pre-sealed at the factory	*	*
Enhanced resistance to weathering	*	*
Reduced dirt absorption	*	**
Stains from leaves, coffee, ketchup, mustard, wine and BBQ oils are easier to remove	*	**

UNILOCK

ELEGANCE COLLECTION

ELEGANCE™

Deep, rich colors and a multitude of unique **Reala™ textures** combine to deliver the timeless beauty of Unilock Elegance. From the timeworn look of European cobblestones, to the classic luxury of riven natural stone slabs, our Elegance collection offers styles you can't get anywhere else. And thanks to Ultima Concrete, the look you purchase is the look that will last, with up to **4x the strength** of poured-in-place concrete.



COPTHORNE®



Inspired by the rich color and timeworn beauty of European street pavers and cast using Reala Technology for an authentic surface appearance, Copthorne uses Ultima Concrete Technology to deliver up to four times the strength of conventional poured concrete.



TECHNICAL ADVANTAGES

Refined surface and long-lasting color

REALA™ TECHNOLOGY

Cast from historic brick, cobble and stone

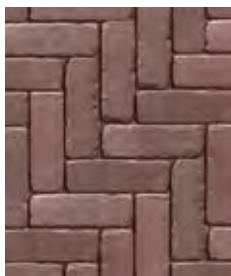
ULTIMA™ CONCRETE TECHNOLOGY

4x stronger than poured-in-place concrete

COLORS



BASALT *



BURGUNDY RED *



BURNT CLAY *



OLD OAK *



BURGUNDY RED /
BURNT CLAY / OLD
OAK BLENDED ON SITE



STEEL BLUE



2½ x 7⅞ x 2⅜" *
(6.5 x 20 x 6cm)

* Available for quick ship across North America.



Modeled after historic North American clay street pavers, Town Hall textures were cast from a multitude of different surfaces using Reala Technology, and Ultima Concrete Technology was used to create superior durability.



TECHNICAL ADVANTAGES

Refined surface and long-lasting color

REALA™ TECHNOLOGY

Cast from historic brick, cobble and stone

ULTIMA™ CONCRETE TECHNOLOGY

4x stronger than poured-in-place concrete

COLORS



BASALT *



BURGUNDY RED *



BURNT CLAY *



OLD OAK *



BURGUNDY RED
BURNT CLAY
OLD OAK
BLENDED ON SITE



HERITAGE CLAY *



HERITAGE RED *



HERITAGE 2
COLOR BLEND
BLENDED ON SITE



4 x 9¾ x 2¾" *
(10 x 25 x 7cm)

Town Hall is also available for permeable installations.

* Available for quick ship across North America.

Inspired by the texture of natural cut flagstone. Richcliff is cast using Reala Technology, which ensures a completely random and natural appearance. Ultima Concrete Technology makes Richcliff up to four times stronger than conventional poured concrete.



TECHNICAL ADVANTAGES

Refined surface and long-lasting color

REALA™ TECHNOLOGY

Cast from historic brick, cobble and stone

ULTIMA™ CONCRETE TECHNOLOGY

4x stronger than poured-in-place concrete

COLORS



DAWN MIST *



PEBBLE TAUPE *



PEBBLE TAUPE / DAWN MIST
BLENDED ON SITE



SMOKE SHALE *

RANDOM BUNDLE (all units sold together) *



LARGE RECTANGLE
12 x 9 x 2³/₈"
(30 x 22.6 x 6cm)



SQUARE
9 x 9 x 2³/₈"
(22.6 x 22.6 x 6cm)



SMALL RECTANGLE
6 x 9 x 2³/₈"
(15 x 22.6 x 6cm)



LARGE RECTANGLE *
21 x 12 x 2³/₈"
(52.8 x 30.2 x 6cm)

* Available for quick ship across North America.

COURTSTONE®



Courtstone brings a luxurious, old-world elegance to every project with Ultima which provides up to four times the strengths of conventional poured concrete. Using Reala Technology, the unique shapes were cast from real European cobblestones but manufactured with a consistent base for efficient installation.



TECHNICAL ADVANTAGES

Refined surface and long-lasting color

REALA™ TECHNOLOGY
Cast from historic brick, cobble and stone

ULTIMA™ CONCRETE TECHNOLOGY
4x stronger than poured-in-place concrete

COLORS



BASALT *



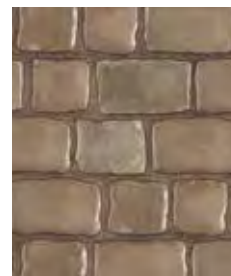
BELGIAN BLUE *



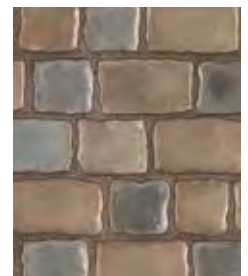
BASALT /
BELGIAN BLUE
BLENDED ON SITE



DAWN MIST *



PEBBLE TAUPE *



DAWN MIST /
PEBBLE TAUPE
BLENDED ON SITE

RANDOM BUNDLE (all units sold together) *



XL RECTANGLE
5 1/8 x 8 3/8 x 2 3/8"
(13 x 21.5 x 6cm)



LARGE RECTANGLE
5 1/8 x 7 1/4 x 2 3/8"
(13 x 18.5 x 6cm)



RECTANGLE
5 1/8 x 6 1/2 x 2 3/8"
(13 x 16.5 x 6cm)



SMALL RECTANGLE
5 1/8 x 5 3/4" x 2 3/8"
(13 x 14.5 x 6cm)



SQUARE
5 1/8 x 5 1/8 x 2 3/8"
(13 x 13 x 6cm)

* Available for quick ship across North America.

UNILOCK FINISH OPTIONS

Unilock has an extensive collection of in stock and quick ship products to suit your project. Our **vast array** of sizes, edges, finish and color options make it easy to achieve your design vision. Speak with your Unilock Representative about in stock options available in your market.



ARCHITECTURAL FINISHES

ENDURACOLOR™



UMBRIANO® MOTTLED FINISH
with ColorFusion™ and EasyClean™



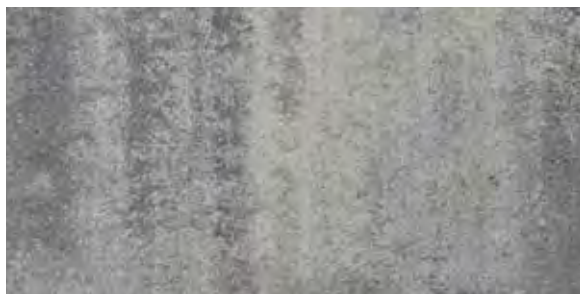
SENZO™ MATTE FINISH
with EasyClean™



SERIES™ EXPOSED GRANITE FINISH



IL CAMPO® BRUSHED FINISH



SMOOTH PREMIER FINISH



FLAGSTONE PREMIER FINISH

CLASSIC



STANDARD FINISH

ARCHITECTURAL FINISHES

UMBRIANO®

ENDURACOLOR™

The unique mottled surface of Umbriano is achieved with ColorFusion™ Technology which randomly disperses rich color and granite particles to achieve a natural, non-slip texture. Factory sealed with EasyClean™, an integral surface protection from stains, it is ideal for high traffic and demanding commercial spaces.

COLORS (Consult your regional Product Data Resource Guide to find locally stocked colors)



WINTER MARVEL (SRI 38)



FRENCH GREY



MIDNIGHT SKY



SUMMER WHEAT (SRI 48)



HARVEST BROWN

SPECIAL ORDER COLORS*



GRENADA WHITE (SRI 52)



SUMMER ROSE



AUTUMN SUNSET (SRI 32)



TECHNICAL ADVANTAGES

Refined surface and long-lasting color

EASYSOFT™ STAIN RESISTANCE - CF 90

Factory sealed to provide integral surface protection from stains

COLORFUSION™ TECHNOLOGY

Subtly mottled color finish



Design award winner 2011

ARCHITECTURAL FINISHES SERIES™

ENDURACOLOR™

The unique surface texture and long term performance of Series makes it one of our most popular pavers for public squares, streetscapes and other commercial applications. Natural granite and quartz aggregates throughout its micro-pebbled surface create speckles of color and sparkle which is only enhanced as the product is exposed to outdoor elements over time.

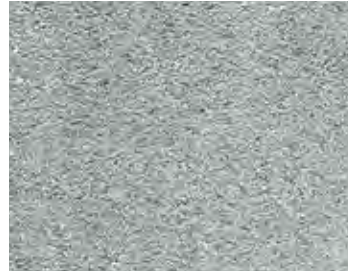
COLORS (Consult your regional Product Data Resource Guide to find locally stocked colors)



PEPPERED GRANITE (SRI 60)



ICE GREY (SRI 38)



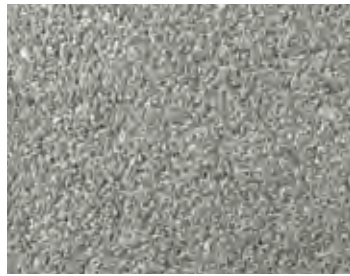
MINERAL ICE GREY (SRI 33)



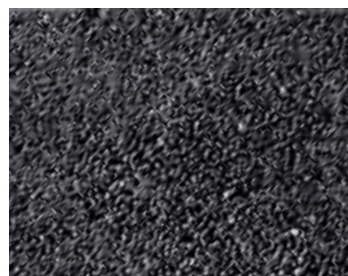
CRYSTAL ROSE



GLACIER



MOUNTAIN MIST (SRI 29)



ONYX BLACK



BLACK GRANITE



GOLDEN SAND

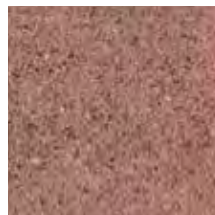


GOLDEN TAN

SPECIAL ORDER COLORS*



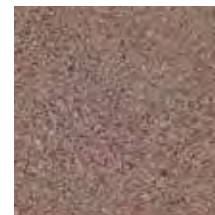
BUFF



CABERNET RED



CORAL GEM



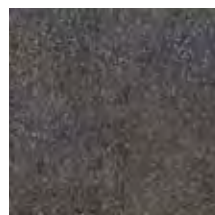
MOCHA BROWN



PLATINUM GREY (SRI 29)



CRYSTALLINE BASALT



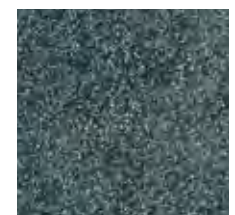
GREY



LAURENTIAN GREEN



BARITONE BLACK



STARLIGHT



TECHNICAL ADVANTAGES

Refined surface and long-lasting color
Granite, Quartz and Marble
surface materials.

ARCHITECTURAL FINISHES

SENZO™

ENDURACOLOR™

The unique colors of Senzo are well-suited to contemporary designs. As well, Senzo is factory sealed with EasyClean™, an integral surface protection from stains.



TECHNICAL ADVANTAGES

Refined surface and long-lasting color

EASYSLEEN™ STAIN RESISTANCE - CF 100

Factory sealed to provide integral surface protection from stains

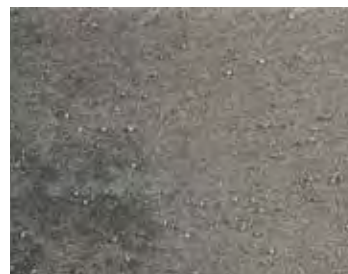
COLORS (Consult your regional Product Data Resource Guide for stocked colors)



CASTANO



CREMO (SRI 49)

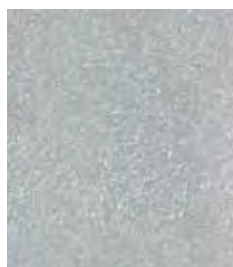


NUVOLA

SPECIAL ORDER COLORS*



BIANCO



GRIGIO
(Grey Blend)



MEDITERANO
(Orange Blend) (SRI 38)

*Special order colors are available, minimum quantities will apply. Not all colors are stocked in all regions. * Please contact your Unilock Representative for more details.*

ARCHITECTURAL FINISHES

IL CAMPO®

ENDURACOLOR™

Created with technology that is exclusive to Unilock, the etched lines on the surface of Il Campo make it a richly detailed, striking and slip resistant choice for virtually any application.



TECHNICAL ADVANTAGES

Refined surface and long-lasting color

BRUSHED FINISH

Graphically interesting etched lines

COLORS (Consult your regional Product Data Resource Guide to find locally stocked sizes and colors)



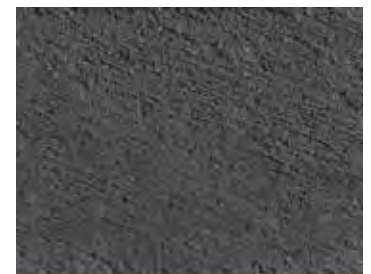
LIMESTONE



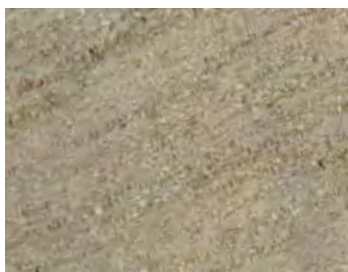
GRANITE



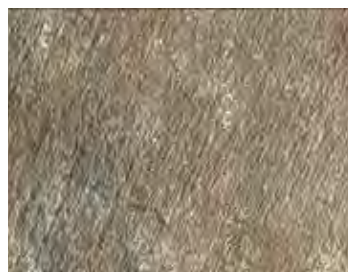
PLATINUM



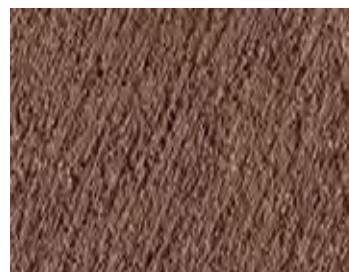
DARK CHARCOAL



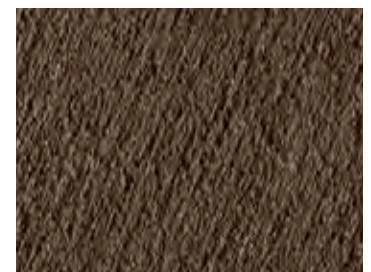
SANDSTONE



BAVARIAN BLEND



HERITAGE BROWN



MOCHA

ARCHITECTURAL FINISHES

FLAGSTONE PREMIER

ENDURACOLOR™

Using EnduraColor facemix technology, Flagstone Premier delivers a long-lasting, colorfast, flagstone texture.



TECHNICAL ADVANTAGES

Refined surface and long-lasting color

COLORS (Consult your regional Product Data Resource Guide to find locally stocked colors)



GRANITE



STEEL MOUNTAIN



ALPINE GREY



GRANITE FUSION



PLATINUM



FOSSIL



RIVER



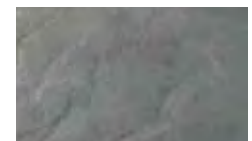
ALMOND GROVE



ALMOND GROVE
FUSION



NEW YORK BLEND



SLATE BLUE



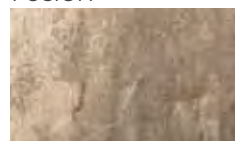
TUSCANY



BIRCH



COFFEE CREEK



BAVARIAN



OAK BROWN FUSION



RIVERBANK



SIERRA

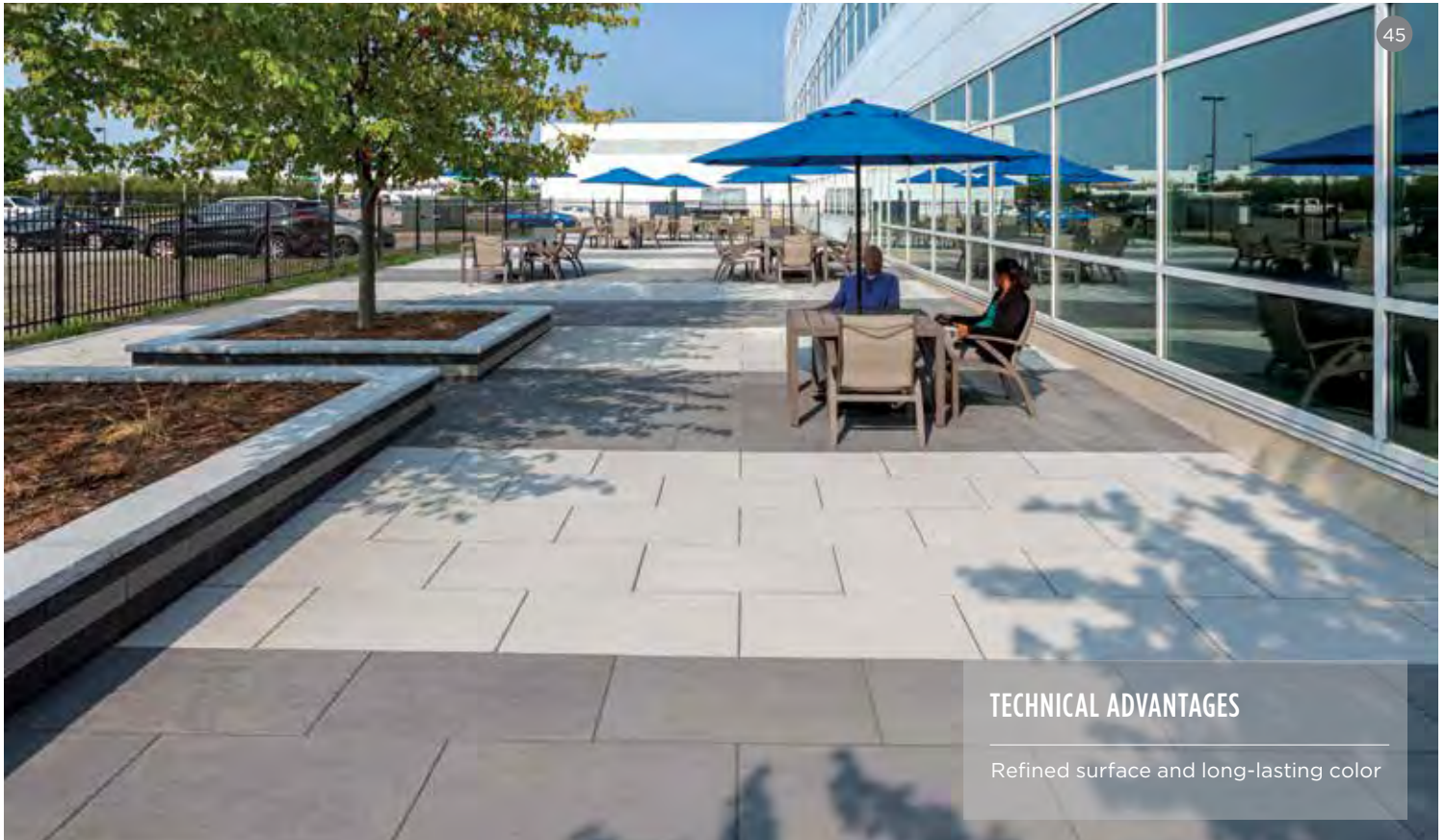


SYCAMORE

ARCHITECTURAL FINISHES SMOOTH PREMIER

ENDURACOLOR™

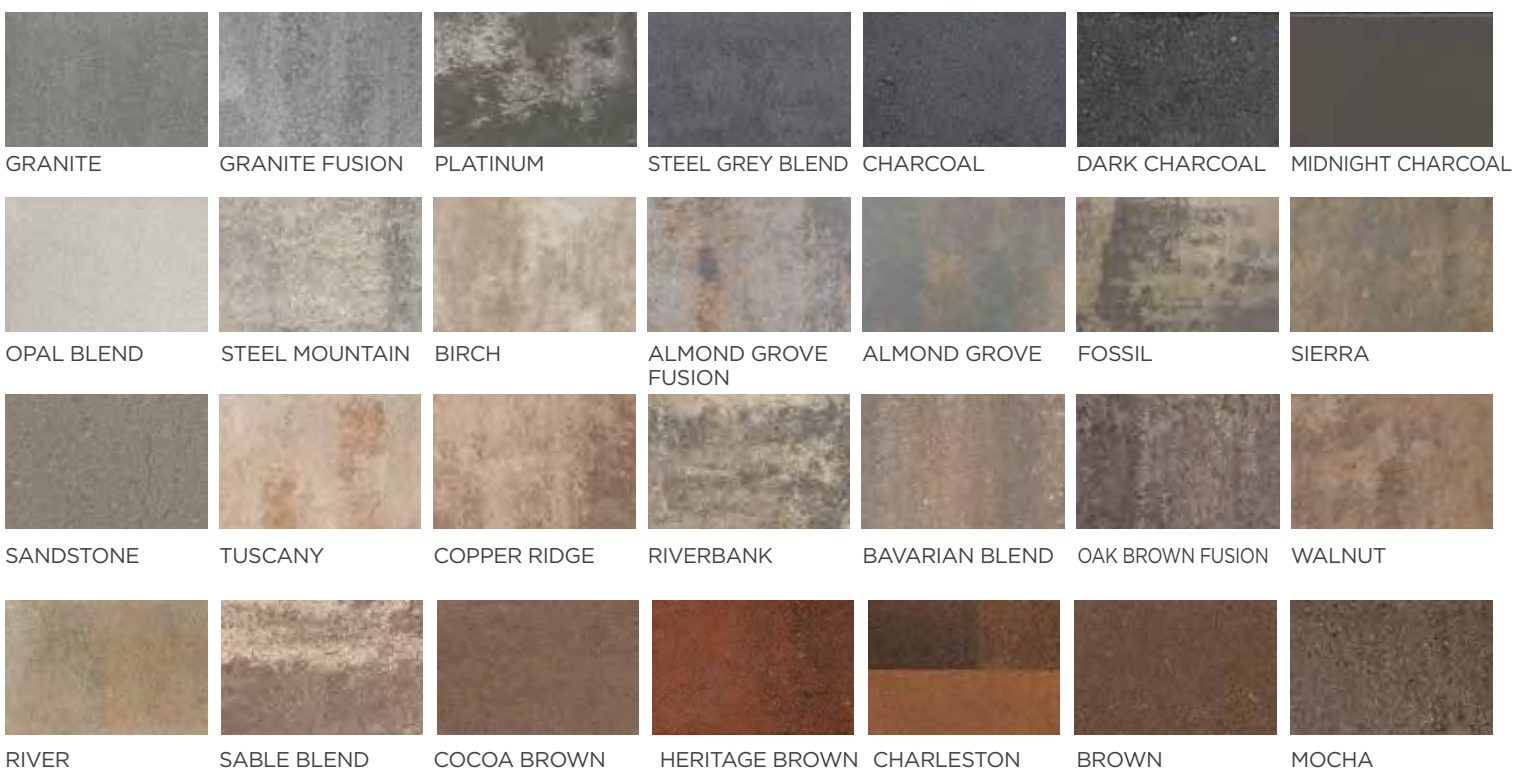
Using EnduraColor facemix technology, Smooth Premier delivers a long-lasting, colorfast, smooth, contemporary texture.



TECHNICAL ADVANTAGES

Refined surface and long-lasting color

COLORS (Consult your regional Product Data Resource Guide to find locally stocked colors)



ARCHITECTURAL FINISHES STANDARD



COLORS (Consult your regional Product Data Resource Guide to find locally stocked colors)



UNILOCK

SIZE COLLECTIONS



ARCHITECTURAL SIZES

SLABS

23 1/2 x 23 1/2 x 2 (60 x 60cm) T: 5cm	23 3/4 x 23 7/8 (60.6 x 60.6cm) T: 5cm	17 7/8 x 23 7/8 (45.3 x 60.6cm) T: 5cm	11 1/8 x 23 7/8 (30.1 x 60.6cm) T: 5cm	11 1/16 x 23 7/8 (30 x 60cm) T: 5cm

SQUARES

36 x 36 (90 x 90cm) T: 10cm	24 x 24 (60 x 60cm) T: 5, 7 or 10cm	16 x 16 (40 x 40cm) T: 7, 8 or 10cm	12 x 12 (30 x 30cm) T: 7, 8 or 10cm	8 x 8 (20 x 20cm) T: 7, 8 or 10cm	6 x 6 (15 x 15cm) T: 7 or 8cm	4 x 4 (10 x 10cm) T: 7cm

RECTANGLES

18 x 36 (45 x 90cm) T: 10cm	16 x 24 (40 x 60cm) T: 10cm	12 x 24 (30 x 60cm) T: 5, 7, 10 or 15cm	12 x 18 (30 x 45cm) T: 10cm	8 x 16 (20 x 40cm) T: 7 or 10cm	7 x 14 (18 x 36cm) T: 6 or 8cm	6 x 12 (15 x 30cm) T: 7, 8 or 10cm	5 x 10 (12 x 24cm) T: 8cm	6 x 8 (15 x 20cm) T: 7cm	4 x 8 (10 x 20cm) T: 6, 7 or 8cm	3 x 6 (7.5 x 15cm) T: 10cm

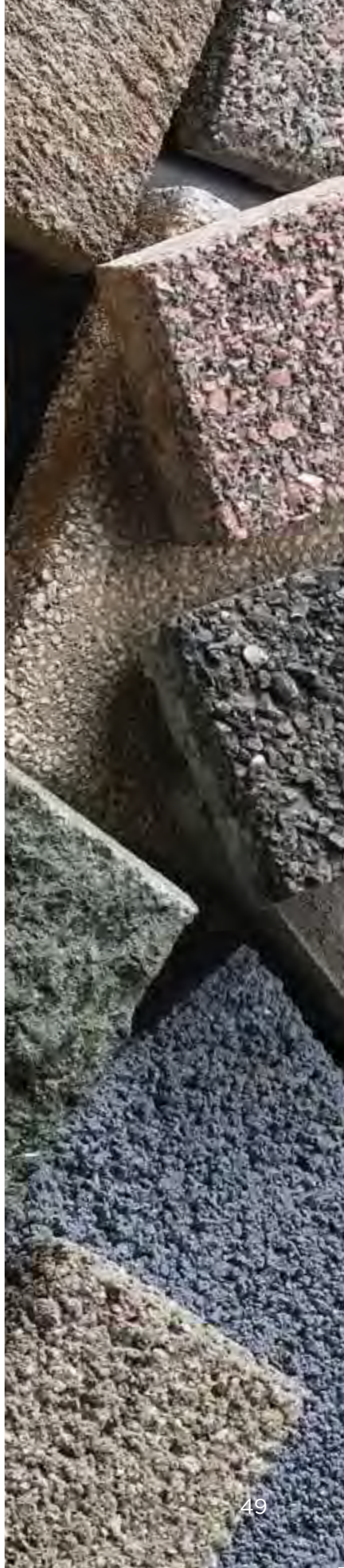
PLANKS

12 x 36 (30 x 90cm) T: 10cm	8 x 24 (20 x 60cm) T: 10 or 15cm	6 x 24 (15 x 60cm) T: 7 or 15cm	4 x 16 (10 x 40cm) T: 10cm	4 x 12 (10 x 30cm) T: 7, 8 or 10cm	3 x 12 (7.5 x 30cm) T: 10cm	2 1/4 x 9 1/2 (6 x 24cm) T: 7cm

RANDOM BUNDLES		
Artline Platform 6" - 17 1/2" x 4" and 7 1/2" (17-45 x 12.5 and 18.75cm) T: 7cm or 10cm	Beacon Hill Platform 21 x 14, 14 x 14, 7 x 14" (54 x 36, 36 x 36, 18 x 36cm) T: 7 or 10cm	
Thornbury Platform 13 1/2" x 16 1/2", 13 1/2" x 8", 6" x 8" (35 x 42, 35 x 21, 17 x 21cm) T: 7 or 8cm	Tribeca Platform 5" x 12, 5" x 9, 5" x 7" (13 x 30.5, 13 x 23, 13 x 17.5cm) T: 6cm	Small Random Platform 6 x 8, 6 x 6, 4 x 6" (15 x 20, 15 x 15, 10 x 15cm) T: 7cm

GEOMETRICS			
8 x 8" (20 x 20cm) T: 7cm	10" x 10 1/4" (26 x 26cm) T: 8cm	6x12x16 1/4" (15x30x42.4cm) T: 7 or 8cm	8" x 5 5/8" (14.7 x 22.4cm) T: 8cm

PERMEABLE OPTIONS				
8 x 8" (20 x 20cm) T: 8cm	10" x 10 1/4" (26 x 26cm) T: 8cm	9" x 9 9/8" (25 x 25cm) T: 8cm	4 x 16" (10 x 40cm) T: 10cm	3 x 12" (7.5 x 30cm) T: 10cm
12 x 12" (30 x 30cm) T: 10cm	10 x 10" (24 x 24cm) T: 8cm	5 x 10" (12 x 24cm) T: 8cm	5 x 5" (12 x 12cm) T: 8cm	Eco-Line® Random Bundle 9" - 14" x 3 1/8" and 4" T:10cm



Not all shapes and sizes are available in all regions, or in all finish or edge options (not shown). Consult your Unilock Representative for more information. All measurements are nominal. T = height / thickness of the slab or paver

COLLECTIONS

SLABS

SKYLINE™

FINISH + COLORS (Consult your regional Product Data Resource Guide to find locally stocked colors)

SMOOTH PREMIER

COLORS

SIZES



Light Buff



Medium Grey

23⁷/₈ x 23⁷/₈ x 2" (5cm)



This product can be manufactured in a variety of special order colors and textures. Minimum quantities will apply. Please contact your Unilock Representative for more details.

ARCANA

The silky, matte texture and unique speckled color palette of Arcana is created by fine blasting its surface to expose a combination of natural granite, quartz and marble particles. The non-slip surface is factory sealed with EasyClean™, an integral surface protection from stains, making Arcana extremely durable and ideal for high traffic pedestrian areas.



11⁷/₈ x 23⁷/₈ x 2"
(30.1 x 60.6 x 5cm)



17⁷/₈ x 23⁷/₈ x 2"
(45.3 x 60.6 x 5cm)

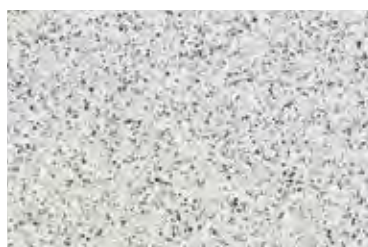


23⁷/₈ x 23⁷/₈ x 2"
(60.6 x 60.6 x 5cm)

COLORS (Consult your regional Product Data Resource Guide to find locally stocked colors)



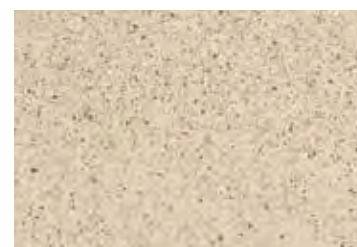
VIVANTO



MODENA



CORVARA



LUGANO



TECHNICAL ADVANTAGES

Refined surface and long-lasting color

EASYCLEAN™ STAIN RESISTANCE

Factory sealed to provide integral surface protection from stains

Arcana is not recommended for vehicular traffic.

COLLECTIONS SQUARES

PRODUCT SPECIFICATIONS



6 x 6 x 2³/₄"
(15 x 15 x 7cm)



8 x 8 x 2³/₈"
(20 x 20 x 6cm)



12x 12 x 2³/₄"
(30 x 30 x 7cm)



16 x 16 x 2³/₄"
(40 x 40 x 7cm)



24x 24 x 2³/₄"
(60 x 60 x 7cm)

FINISH + COLORS (Consult your regional Product Data Resource Guide to find locally stocked colors)

UMBRIANO® FINISH



COLORS



SIZES

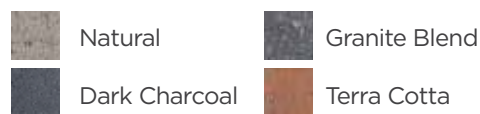
16 x 16 x 2³/₄ (7cm) *
24 x 24 x 2³/₄ (7cm) *

SERIES™ FINISH

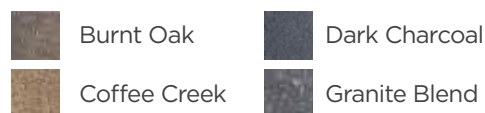


6 x 6 x 2³/₄(7cm)

STANDARD FINISH



8 x 8 x 2³/₈" (6cm)



6 x 6 x 2³/₄ (7cm)
12 x 12 x 2³/₄ (7cm)



COLLECTIONS

RECTANGLES



4 x 8 x 2 3/8"
(10 x 20 x 6cm)



6 x 12 x 2 3/4"
(15 x 30 x 7cm)



7 x 14 x 2 3/8" or 3 1/8"
(18 x 36 x 6 or 8cm)



8 x 16 x 2 3/4"
(20 x 40 x 7cm)



12 x 24 x 2 3/4"
(30 x 60 x 7cm)



21 x 28 x 2 3/8" (CDA)
(54 x 72 x 6cm)



21 x 35 x 2 3/8" (USA)
(54 x 90 x 6cm)

FINISH + COLORS (Consult your regional Product Data Resource Guide to find locally stocked colors)

UMBRIANO[®] FINISH

COLORS

SIZES



French Grey*



Winter Marvel*



Summer Wheat*

8 x 16 x 2 3/4" (7cm) *
12 x 24 x 2 3/4" (7cm) *



Midnight Sky*



Harvest Brown



French Grey



Winter Marvel



Summer Wheat

7 x 14 x 3 1/8" (8cm)

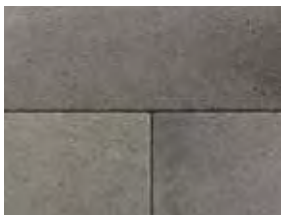


Midnight Sky



Harvest Brown

SENZO[™] FINISH



Castano *

8 x 16 x 2 3/4" (7cm) *



Crema *



Nuvola *

SERIES[™] FINISH



Black Granite *



Ice Grey



Mineral Ice Grey

4 x 8 x 2 3/4" (7cm) *



Crystal Rose



Golden Tan



Onyx Black



Black Granite



Mountain Mist

7 x 14 x 3 1/8" (8cm)



Ice Grey



Golden Sand



Black Granite



Mountain Mist



Glacier

8 x 16 x 2 3/4" (7cm)

IL CAMPO® FINISH



COLORS

Dark Charcoal*	Heritage Brown	Granite Blend
Bavarian	Mocha	
Limestone	Sandstone	

SIZES

4 x 8" x 2³/₄" (7cm) *

8 x 16 x 2³/₄" (7cm)

SMOOTH PREMIER



Brown	Fossil	Mocha
Charcoal	Granite Blend	River
Dark Charcoal	Heritage Brown	Sierra
Charleston		

4 x 8 x 2³/₈" (6cm)

Opal Blend	Midnight Charcoal
------------	-------------------

7 x 14 x 2³/₈" (6cm)
7 x 14 x 3¹/₈" (8cm)

Opal Blend	Almond Grove Fusion	Oak Brown Fusion
Tuscany	Granite Fusion	

21 x 28 x 3¹/₈" (8cm)

Bavarian	Fossil	Steel Grey
Copper Ridge	Opal Blend	Steel Mountain
Granite Fusion	Sierra	Tuscany

21 x 35 x 2³/₈" (6cm)

FLAGSTONE PREMIER



Almond Grove	Fossil	Slate Blue
Alpine Grey	New York	Steel Mountain
Bavarian	Platinum	Sycamore
Birch	River	Tuscany
Coffee Creek	Sierra	Walnut

21 x 35 x 2³/₈" (6cm)

STANDARD FINISH



Almond Grove	Granite *	Rustic Red *
Autumn Red	Natural	Sandstone
Beechwood	Prairie	Sierra *
Charcoal	Red	St Clair
Coffee Creek	River Blend	Terra Cotta *

4 x 8 x 2³/₈" (6cm) *

Burnt Oak	Granite Blend
Coffee Creek	Dark Charcoal

6 x 12 x 2³/₄" (7cm)

COLLECTIONS PLANKS



8 x 24 x 4 or 6"
(20 x 60 x 10 or 15cm)

6 x 24 x 2¾ or 6"
(15 x 60 x 7cm or 15cm)

4 x 16 x 4"
(10 x 40 x 10cm)

4 x 12 x 4"
(10 x 30 x 10cm)

3 x 12 x 4"
(7 x 30 x 10cm)

9½ x 2¼ x 2¾"
(24 x 6 x 7cm)

FINISH + COLORS (Consult your regional Product Data Resource Guide to find locally stocked colors)

UMBRIANO® FINISH

COLORS

SIZES



French Grey



Summer Wheat



Winter Marvel

8 x 24 x 2¾" (7cm)

SERIES™ FINISH



Black Granite

4 x 12 x 4" (10cm)
8 x 24 x 4" (10cm)

IL CAMPO® FINISH



Granite Blend

4 x 12 x 4" (10cm)
8 x 24 x 4" (10cm)

SMOOTH PREMIER



Sandstone

4 x 12 x 4" (10cm)



Opal Blend*



Steel Grey Blend*

4 x 16 x 4" (10cm) *



Opal Blend



Steel Grey Blend

8 x 24 x 4" (10cm)



Charleston



Dark Charcoal*

9½ x 2¼ x 2¾" (7cm) *



Cocoa Brown*



Sable Blend*



COLLECTIONS

RANDOM BUNDLE

Artline™ PLATFORM

RANDOM BUNDLE (all units sold together)



6¾ x 4⅞ x 2¾"
(16.9 x 12.5 x 7cm)

10⅜" x 4⅞ x 2¾"
(26.25 x 12.5 x 7cm)

13⅝ x 4⅞ x 2¾"
(33.75 x 12.5 x 7cm)

17¼ x 4⅞ x 2¾"
(45 x 12.5 x 7cm)

8⅞ x 7½ x 2¾"
(22.5 x 18.75 x 7cm)

13⅝ x 7½ x 2¾"
(33.75 x 18.75 x 7cm)

17¼ x 7½ x 2¾"
(45 x 18.75 x 7cm)

FINISH + COLORS (Consult your regional Product Data Resource Guide to find locally stocked colors)

UMBRIANO® FINISH

COLORS

SIZES



French Grey



Midnight Sky



Winter Marvel

Artline Platform

IL CAMPO® FINISH



Bavarian Blend



Granite Blend



Platinum

Artline Platform

SMOOTH PREMIER



Birch



Granite



Steel Mountain

Artline Platform



Bavarian Blend



Granite Fusion



Tuscany



Copper Ridge



Platinum



Walnut



Riverbank



Sierra

10cm (4") Artline is available by special order only. Minimum quantities apply.

This product can be manufactured in a variety of special order colors and textures. Minimum quantities will apply. Please contact your Unilock Representative for more details.



COLLECTIONS

RANDOM BUNDLE

Beacon Hill™ PLATFORM

RANDOM BUNDLE (all units sold together)



LARGE RECTANGLE
21 x 14 x 2³/₈" or 3¹/₈"
(54 x 36 x 6cm or 8cm)



SQUARE
14 x 14 x 2³/₈" or 3¹/₈"
(36 x 36 x 6cm or 8cm)



SMALL RECTANGLE
7 x 14 x 2³/₈" or 3¹/₈"
(18 x 36 x 6cm or 8cm)

RECTANGLE COMBINATION OPTIONS

7 x 14 x 2³/₈" or 3¹/₈"
21 x 35 x 2³/₈" (6cm) (US)
21 x 28 x 2³/₈" (6cm) (CDA)

FINISH + COLORS (Consult your regional Product Data Resource Guide to find locally stocked colors)

UMBRIANO® FINISH

COLORS

SIZES



French Grey *	Winter Marvel *	Summer Wheat *	Beacon Hill Platform 2 ³ / ₈ " (6cm) *
Midnight Sky *	Harvest Brown		
French Grey *	Winter Marvel *	Summer Wheat *	Beacon Hill Platform 3 ¹ / ₈ " (8cm) *
Midnight Sky *	Harvest Brown		

SERIES™ FINISH



Mineral Ice Grey		Beacon Hill Platform 2 ³ / ₈ " (6cm)
Black Granite	Mountain Mist	Beacon Hill Platform 3 ¹ / ₈ " (8cm)
Ice Grey	Golden Sand	

SMOOTH PREMIER



Almond Grove Fusion	Fossil	Sierra	Beacon Hill Platform 2 ³ / ₈ " (6cm) *
Bavarian Blend	Granite Fusion	Steel Mountain	
Birch	Oak Brown Fusion	Steel Grey Blend	Beacon Hill Platform 3 ¹ / ₈ " (8cm)
Copper Ridge	Opal Blend *	Tuscany	
Almond Grove Fusion	Oak Brown Fusion	Tuscany	Beacon Hill Platform 3 ¹ / ₈ " (8cm)
Granite Fusion	Opal Blend		

* Available for quick ship across North America.

Beacon Hill 6cm not recommended for vehicular traffic.

This product can be manufactured in a variety of special order colors and textures. Minimum quantities will apply. Please contact your Unilock Representative for more details.

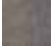
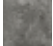




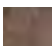


FLAGSTONE PREMIER

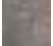
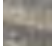









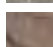




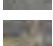

COLORS

SIZES



 Almond Grove	 Granite Fusion	 Tuscany
 Alpine Grey	 Oak Brown Fusion	
 Bavarian Blend	 Sycamore	

Beacon Hill Platform 2 $\frac{3}{8}$ " (6cm)

 Almond Grove	 Fossil	 Sierra
 Almond Grove Fusion	 Granite Fusion	 Slate Blue
 Alpine Grey	 New York Blend	 Steel Mountain
 Bavarian Blend	 Oak Brown Fusion	 Sycamore
 Birch	 Platinum	 Tuscany *
 Coffee Creek	 River	 Walnut

Beacon Hill Platform 3 $\frac{1}{8}$ " (8cm) *

Beacon Hill 6cm is not recommended for vehicular traffic.

COLLECTIONS

RANDOM BUNDLE

Thornbury™ PLATFORM

RANDOM BUNDLE (all units sold together)



LARGE RECTANGLE
13¾ x 16½ x 2¾"
(35 x 42 x 7cm)



MEDIUM RECTANGLE
13¾ x 8¼ x 2¾"
(35 x 21 x 7cm)



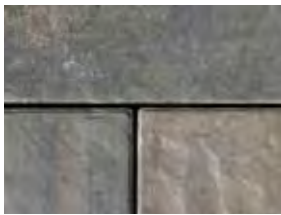
SMALL RECTANGLE
6⅞ x 8¼ x 2¾"
(17.3 x 21 x 7cm)

FINISH + COLORS (Consult your regional Product Data Resource Guide to find locally stocked colors)

FLAGSTONE PREMIER

COLORS

SIZES



Almond Grove



Riverbank



Granite



Sierra

Thornbury
Platform 2¾" (7cm)



COLLECTIONS

RANDOM BUNDLE

Small Random PLATFORM

RANDOM BUNDLE (all units sold together)



6 x 8 x 2³/₄"
(15 x 20 x 7cm)



6 x 6 x 2³/₄"
(15 x 15 x 7cm)



4 x 6 x 2³/₄"
(10 x 15 x 7cm)

FINISH + COLORS (Consult your regional Product Data Resource Guide to find locally stocked colors)

IL CAMPO® FINISH



COLORS



Bavarian Blend



Heritage Brown

SIZES

Small Random
Platform 2³/₄" (7cm)



COLLECTIONS

GEOMETRICS

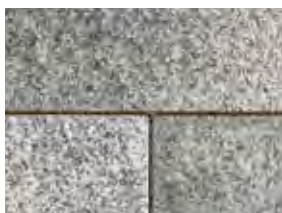
Hex

This traditional urban paver shape now available in many special order finishes and colors to give it a more modern aesthetic.



8 x 8 x 2 3/4"
(20 x 20 x 7cm)
SPECIAL ORDER

SPECIAL ORDER FINISH OPTIONS



UMBRIANO[®]
Mottled Finish



SENZO™
Matte Finish



SERIES™
Exposed Granite Finish



IL CAMPO[®]
Brushed Finish



SMOOTH PREMIER
Finish

SPECIAL ORDER COLOR OPTIONS*



This product can be manufactured in a variety of special order colors and textures. Minimum quantities will apply. Please contact your Unilock Representative for more details.

Optiloc[®]

Optiloc is a high performance, heavy duty industrial paver that is one of the best solutions for vehicular pavements. Possessing L-shaped, tri-axis locking principle offers a sleeker, rectilinear look, which can also be laid mechanically. For large scale commercial projects, special order colors and textures are available.



SPECIAL ORDER FINISH OPTIONS



SERIES™
Exposed Granite Finish



IL CAMPO™
Brushed Finish



SMOOTH PREMIER
Finish

SPECIAL ORDER COLOR OPTIONS*



This product can be manufactured in a variety of special order colors and textures. Minimum quantities will apply. Please contact your Unilock Representative for more details.

UNILOCK PERMEABLE

Since Unilock **introduced permeable** pavers to North America more than twenty-five years ago, we have **steadily increased** our selection of sizes, shapes, colors and finishes. Our permeable pavers are suitable for a variety of applications and have joint spacing that complies with the Americans with Disabilities Act.



COLLECTIONS

PERMEABLE ELEGANCE

Town Hall®

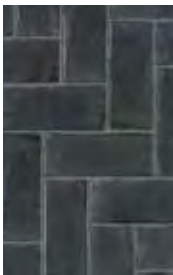
The Town Hall street paver has been designed to satisfy both traditional and permeable installation methods while maintaining a time-worn, historical and distressed appearance.



4 x 9¾ x 2¾" *
(10 x 25 x 7cm)

Joint Width 9mm
Void Space 6.5%
ADA Compliant

COLORS



BASALT *



BURGUNDY RED *



BURNT CLAY *



OLD OAK *



BURGUNDY RED
BURNT CLAY
OLD OAK
BLENDED ON SITE



HERITAGE CLAY *

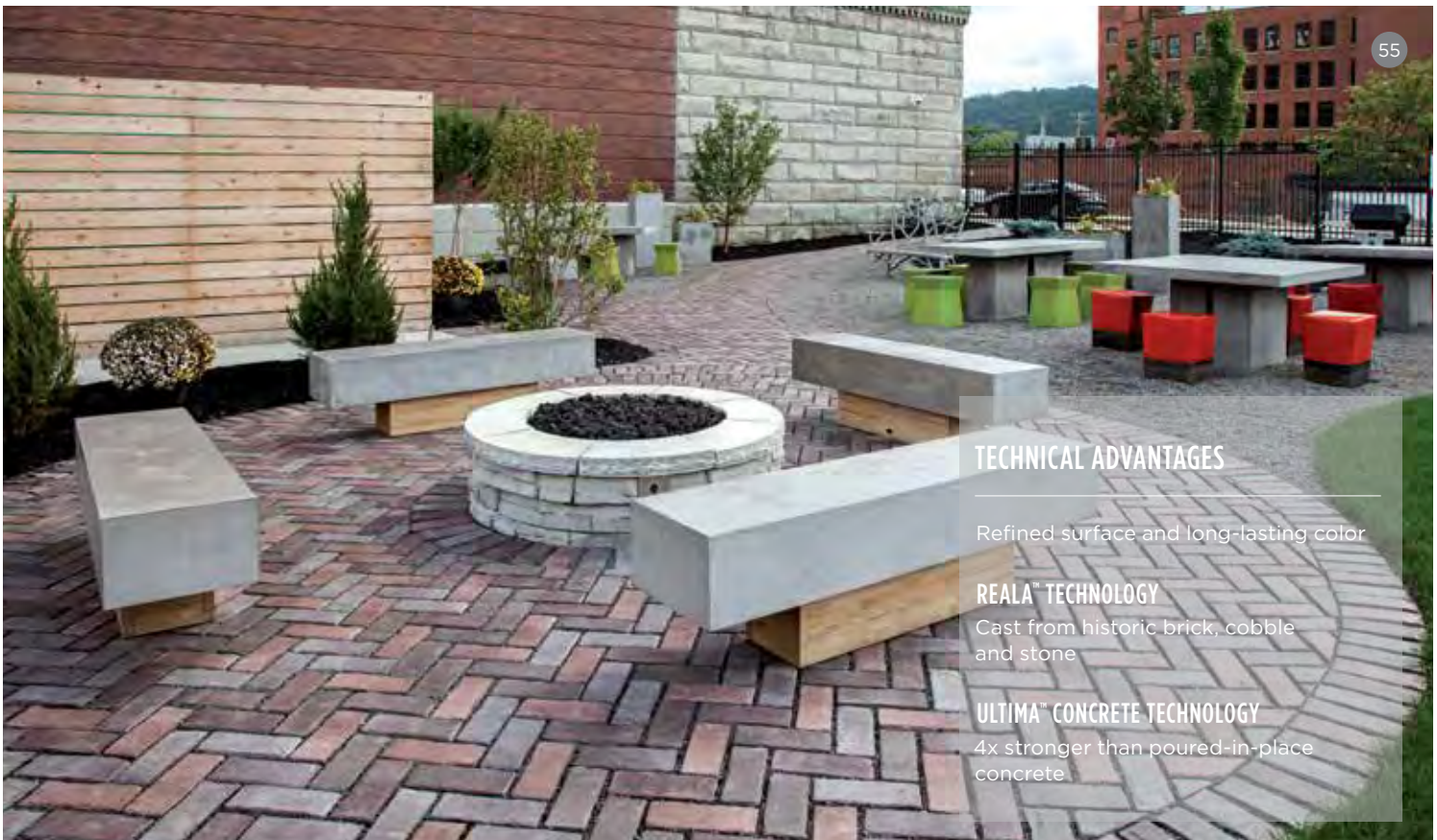


HERITAGE RED *



HERITAGE 2
COLOR BLEND
BLENDED ON SITE

* Available for quick ship across North America.



55

TECHNICAL ADVANTAGES

Refined surface and long-lasting color

REALA™ TECHNOLOGY

Cast from historic brick, cobble and stone

ULTIMA™ CONCRETE TECHNOLOGY

4x stronger than poured-in-place concrete

COLLECTIONS

PERMEABLE SQUARES



12 x 12 x 3/8"
(30 x 30 x 8cm)
SPECIAL ORDER

Joint Width 7mm
Void Space 3.6%
ADA Compliant



Eco-Priora™
10 x 10 x 3/8"
(24 x 24 x 8cm)
SPECIAL ORDER

Joint Width 7mm
Void Space 4.6%
ADA Compliant



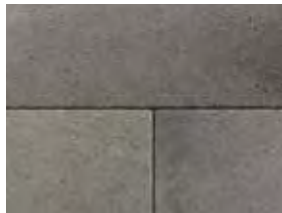
Eco-Priora™
5 x 5 x 3/8" **
(12 x 12 x 8cm)
SPECIAL ORDER

Joint Width 7mm
Void Space 9%
ADA Compliant

SPECIAL ORDER FINISH OPTIONS



UMBRIANO™
Mottled Finish



SENZO™
Matte Finish



SERIES™
Exposed Granite Finish



IL CAMPO™
Brushed Finish



SMOOTH PREMIER
Finish

SPECIAL ORDER COLOR OPTIONS*



*This product can be manufactured in a variety of special order colors and textures. Minimum quantities will apply.**Available in select markets. Please contact your Unilock Representative for more details.*

COLLECTIONS

PERMEABLE RECTANGLES



Eco-Priora™ Joint Width 7mm
 5 x 10 x 3 1/8" Void Space 6.8%
 (12 x 24 x 8cm) ADA Compliant

Herringbone bundles are available for mechanical installation in select markets. Ask your Unilock Representative for more details.




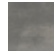


FINISH + COLORS (Consult your regional Product Data Resource Guide to find locally stocked colors)

SMOOTH PREMIER

COLORS

SIZES

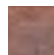



- | | | |
|---|--|---|
|  Beechwood |  Heritage Brown |  River Blend |
|  Granite Blend |  Natural |  Sierra |

5 x 10 x 3 1/8" (8cm)

STANDARD FINISH



- | |
|--|
|  Heritage Brown |
|  Sandstone |

5 x 10 x 3 1/8" (8cm)



This product can be manufactured in a variety of special order colors and textures. Minimum quantities will apply. Please contact your Unilock Representative for more details.

COLLECTIONS

PERMEABLE PLANKS



4 x 16 x 4"
(10 x 40 x 10cm) Joint Width 7mm
Void Space
ADA Compliant



3 x 12 x 4"
(7 x 30 x 10cm) Joint Width 7mm
Void Space 9.3%
ADA Compliant

FINISH + COLORS (Consult your regional Product Data Resource Guide to find locally stocked colors)

UMBRIANO® FINISH

COLORS

SIZES



Midnight Sky



Winter Marvel

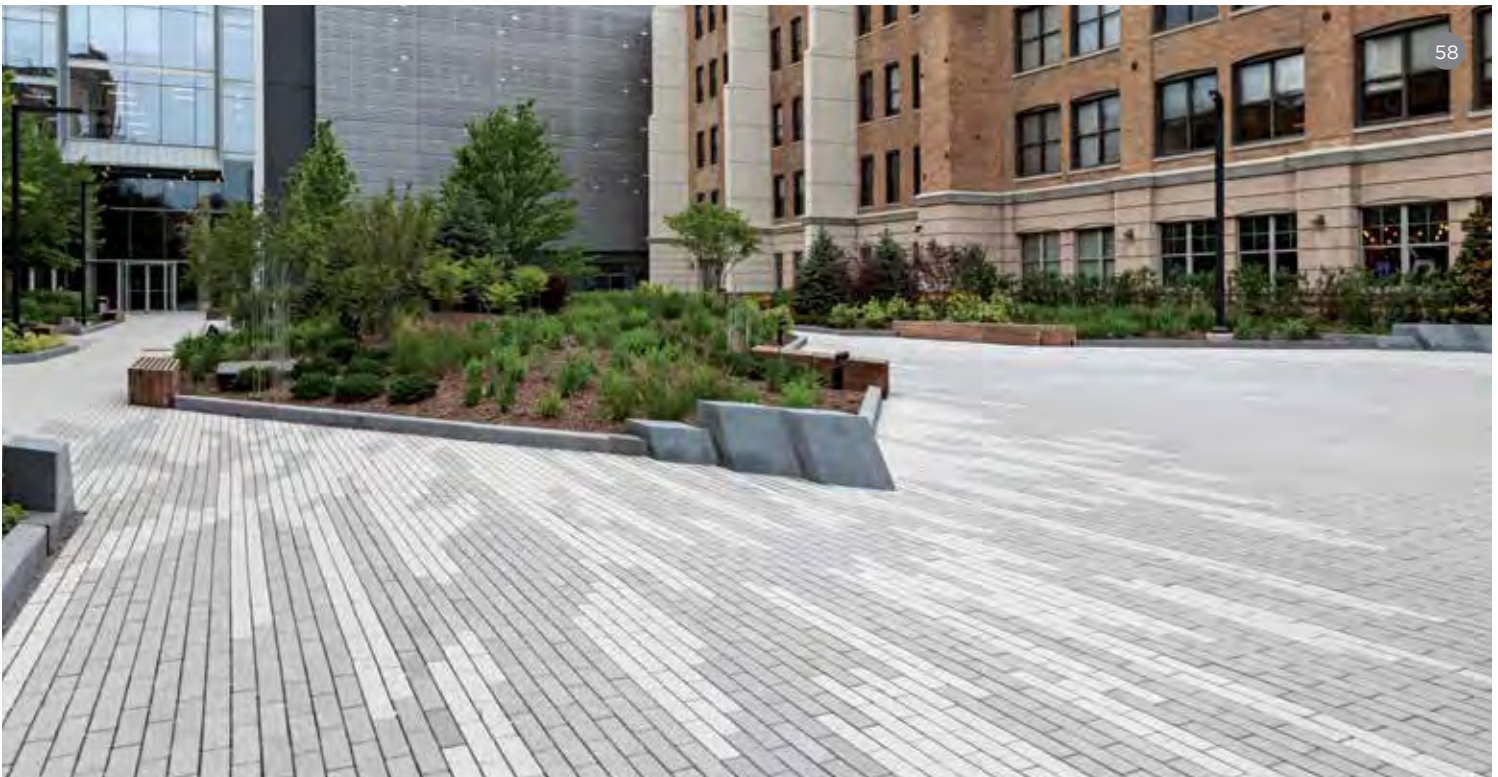
3 x 12 x 4" (10cm)

SMOOTH PREMIER



Opal Blend

3 x 12 x 4" (10cm)



This product can be manufactured in a variety of special order colors and textures. Minimum quantities will apply. Please contact your Unilock Representative for more details.



Tribeca Cobble™ PLATFORM

RANDOM BUNDLE (all units sold together) *

Joint Width 10mm
Void Space 5.6%

LARGE RECTANGLE
5 1/8" x 12" x 2 3/8"
(13cm x 30.5cm x 6cm)

SMALL RECTANGLE
5 1/8" x 9" x 2 3/8"
(13cm x 23cm x 6cm)

SQUARE
5 1/8" x 7" x 2 3/8"
(13cm x 17.5cm x 6cm)

COLORS (Consult your regional Product Data Resource Guide to find locally stocked colors)



CRYSTALLINE BASALT *



PEPPERED GRANITE *

* Available for quick ship across North America.



TECHNICAL ADVANTAGE

Refined surface and long-lasting color
Granite, Quartz and Marble
surface materials.

Thornbury™ PLATFORM

RANDOM BUNDLE (all units sold together)

Joint Width 11-18 mm
Void Space 4.4%



LARGE RECTANGLE
13¾ x 16½ x 2¾"
(35 x 42 x 7cm)



MEDIUM RECTANGLE
13¾ x 8¼ x 2¾"
(35 x 21 x 7cm)



SMALL RECTANGLE
6⅞ x 8¼ x 2¾"
(17.3 x 21 x 7cm)



FINISH + COLORS (Consult your regional Product Data Resource Guide to find locally stocked colors)

SMOOTH PREMIER

COLORS

SIZES







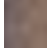


-  Almond Grove
-  Steel Mountain

Thornbury
Platform 2¾" (7cm)

FLAGSTONE PREMIER



-  Almond Grove
-  Alpine Grey
-  Bavarian Blend
-  Birch
-  New York Blend
-  Sierra
-  Sycamore

Thornbury
Platform 2¾" (7cm)





Eco-Line® PLATFORM

Joint Width 6.25mm
Void Space 5.8%
ADA Compliant

RANDOM BUNDLE (all units sold together)



14 x 3⁵/₁₆ x 4"
(35.7 x 8.4 x 10cm)

12¹/₂ x 3⁵/₁₆ x 4"
(31.7 x 8.4 x 10cm)

11 x 3⁵/₁₆ x 4"
(27.7 x 8.4 x 10cm)

9³/₈ x 3⁵/₁₆ x 4"
(23.7 x 8.4 x 10cm)

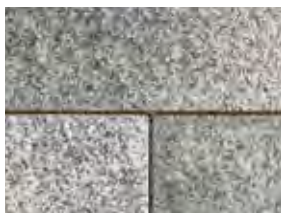
14 x 4¹/₂ x 4"
(35.7 x 11.4 x 10cm)

12¹/₂ x 4¹/₂ x 4"
(31.7 x 11.4 x 10cm)

11 x 4¹/₂ x 4"
(27.7 x 11.4 x 10cm)

9³/₈ x 4¹/₂ x 4"
(23.7 x 11.4 x 10cm)

SPECIAL ORDER FINISH OPTIONS



UMBRIANO®
Mottled Finish



SERIES™
Exposed Granite Finish



IL CAMPO®
Brushed Finish



SMOOTH PREMIER
Finish

SPECIAL ORDER COLOR OPTIONS*



*This product can be manufactured in a variety of special order colors and textures. Minimum quantities will apply. Please contact your Unilock Representative for more details.
Designed for mechanical installation.*



Hex



8 x 8 x 3/4"
(20 x 20 x 8cm)
SPECIAL ORDER

Joint Width 10mm
Void Space 4.2%
ADA Compliant

SPECIAL ORDER FINISH OPTIONS



UMBRIANO[®]
Mottled Finish



SENZO[™]
Matte Finish



SERIES[™]
Exposed Granite Finish



IL CAMPO[®]
Brushed Finish



SMOOTH PREMIER
Finish

SPECIAL ORDER COLOR OPTIONS*



This product can be manufactured in a variety of special order colors and textures. Minimum quantities will apply. Please contact your Unilock Representative for more details.

COLLECTIONS

PERMEABLE GEOMETRICS

Dura-Flow™

This latest evolution of permeable pavement is purposely shaped in a joint size, radius and angle to promote flow dynamics that facilitate easier cleaning and joint maintenance.



9 7/8" x 9 7/8" x 3 1/8"
(25cm x 25cm x 8cm)

Joint Width 12mm
Void Space 8%
ADA Compliant

SPECIAL ORDER FINISH OPTIONS



UMBRIANO®
Mottled Finish



SERIES™
Exposed Granite Finish



IL CAMPO®
Brushed Finish



SMOOTH PREMIER
Finish

SPECIAL ORDER COLOR OPTIONS*



This product can be manufactured in a variety of special order colors and textures. Minimum quantities will apply. Please contact your Unilock Representative for more details.

COLLECTIONS

PERMEABLE GEOMETRICS

Eco-Optiloc™

Eco-Optiloc is one of the best solutions for vehicular pavements. It seamlessly combines both superior load-bearing properties and drainage capabilities.



10¼ x 10¼ x 3⅞" *
(26cm x 26cm x 8cm)

Joint Width 12mm
Void Space 7.3%
ADA Compliant

STANDARD FINISH

COLORS

SIZES



Natural *

10¼ x 10¼ x 3⅞" (8cm) *

* Available for quick ship across North America.



64

*This product can be manufactured in a variety of special order colors and textures. Minimum quantities will apply. * Please contact your Unilock Representative for more details.*

UNILOCK

STANDALONE PRODUCTS



STANDALONE PRODUCTS

BRUSSELS BLOCK



COLORS (Consult your regional Product Data Resource Guide to find locally stocked colors)



SANDSTONE *
(SRI 40-MA)



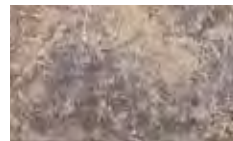
ALMOND GROVE



DESERT SAND



COFFEE CREEK



MAHOGANY



SIERRA



LIMESTONE *
(SRI 29-ON)



NEW YORK BLEND



MIDNIGHT CHARCOAL



DIMENSIONAL PAVER
8 x 12 x 4"
(20 x 30 x 10cm)



XL STONE *
8 $\frac{1}{4}$ x 13 $\frac{3}{4}$ x 2 $\frac{3}{4}$ "
(20.8 x 34.8 x 7cm)



STANDARD STONE *
6 $\frac{7}{8}$ x 8 $\frac{1}{4}$ x 2 $\frac{3}{4}$ "
(17.4 x 20.8 x 7cm)



HALF STONE *
4 $\frac{1}{8}$ x 6 $\frac{7}{8}$ x 2 $\frac{3}{4}$ "
(10.4 x 17.4 x 7cm)

* Available for quick ship across North America.

STANDALONE PRODUCTS

BRONTE™ STREET PAVER

Ideal for heavy-duty applications with superior load-bearing properties. The interlocking tongue and groove provides maximum performance where vehicle turning creates a twist load on the paver.

66



COLORS



NATURAL - DISTRESSED FINISH
SPECIAL ORDER

SPECIAL ORDER COLOR OPTIONS*



8 $\frac{5}{8}$ " x 5 $\frac{1}{2}$ " x 4"
(22cm x 14cm x 10cm)

*Special Order colors are available, minimum quantities will apply. * Please contact your Unilock Representative for more details.*

LEED® CREDIT OPPORTUNITIES

LEED, Leadership in Energy & Environmental Design, is a green building certification program that recognizes best-in-class building strategies and practices that have a positive impact on the health of occupants, while promoting renewable, clean energy. To receive LEED certification, building projects satisfy prerequisites and earn points to achieve different levels of certification. Unilock products can help with your certification goals.

POTENTIAL LEED CREDITS FOR UTILIZING PERMEABLE PAVERS

RAINWATER MANAGEMENT: LEED V4

Up to three points can be achieved for retaining rainwater onsite based on the percentile kept. 85% (zero lot line projects only) • 3 points, 95% - 2 points and 98% - 3 points. (all except Healthcare - subtract one point)
See LEED v4 for more specific project/site details.

MATERIALS AND RESOURCES: LEED V4


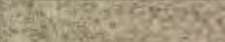



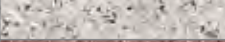


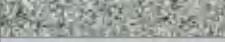
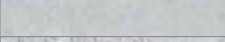
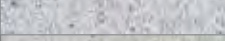
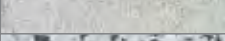
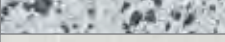
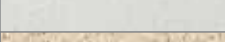

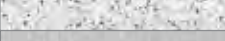
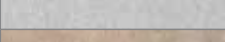
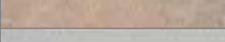
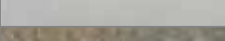
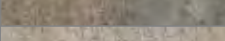

- Building Product Disclosure and Optimization - Sourcing of Raw Materials - Sourcing of Raw Materials and Extraction • 1 point
- Building Product Disclosure and Optimization - Sourcing of Raw Materials - Leadership Extraction Practices • 1 point
- Building Product Disclosure and Optimization - Material Ingredient Reporting- Material Ingredient Reporting • 1 point
- Building Product Disclosure and Optimization - Material Ingredient Reporting - Material Ingredient Optimization • 1 point
- Building Product Disclosure and Optimization - Environmental Product Declaration • 1 point

HEAT ISLAND REDUCTION - NON-ROOF: LEED V4

Paving materials with a three-year aged solar reflectance (SR) value of at least 0.28. If three-year aged value information is not available, use materials with an initial SR of at least 0.33 at installation OR use an open grid pavement at least 50% pervious • 2 points (except Healthcare - 1 point)
See LEED v4 for more specific site calculations.

SOLAR REFLECTANCE

Solar Reflectance Index (SRI) is a criterion used by USGBC that measures values of sunlight and radiation bouncing from built surfaces. It is used to measure urban heat island effects in city centers. Dark pavement absorbs heat during the day and then releases it at night. This process creates a situation that causes urban centers to stay warmer all the time which contributes to air pollution and increased energy consumption. Careful selection of materials and colors can help reduce urban heat island effects.

SAMPLE OF QUALIFIED UNILOCK COLORS (≥33)				
Surface Finish	Color	Swatch	Solar Reflectance	SRI*
Umbriano® (mottled)	Grenada White		0.45	52
	Summer Wheat		0.42	48
	Winter Marvel		0.35	38
Series™ (exposed Granite)	Golden Tan		0.40	45
	Chardonnay Tan		0.39	44
	Peppered Granite		0.38	42
	Coral Gem		0.37	41
	Ice Grey		0.35	38
	Mineral Ice Grey		0.31	33
	SS0080		0.44	50
	SS0025		0.42	48
	SS0014		0.41	46
	SS0026		0.37	41
SS0088		0.32	34	
Arcana	Lugano		0.46	53
	Modena		0.46	53
Smooth Premier	TX Active White		0.46	53
	Tuscany Blend		0.39	44
	Opal		0.32	34
Standard Finish	River		0.32	34
	Nevada		0.31	33

Values may change slightly by region due to variations in local aggregate and granite. Please be sure to contact your Unilock Representative for a comprehensive and current list of SRI product values.



RECYCLED CONTENT

SUPPLEMENTARY CEMENTITIOUS MATERIALS (SCM)

Concrete is a mixture of sand, coarse granite, water and the principal cementitious material which is Portland cement. Today, most concrete recipes also contain supplementary cementitious material (SCM) admixtures. These can be by-products from other processes or natural materials that may or may not have been further processed for use in concrete. These materials may include Fly Ash (Class C or F), Ground Granulated Blast Furnace Slag (GGBFS), Silica Fume, Natural Pozzolans, recycled glass and more.

These admixtures can contribute toward achieving the cumulative minimum recycled content criteria for Leadership Extraction Practices.

Speak with your Unilock Representative about local SCM's available for custom orders.

PROJECT: Little Caesars Arena. Detroit, MI

DESIGN: SmithGroup

PRODUCT: Artline™ Platform - Series™ finish in custom colors

Development in The District Detroit is a dynamic entertainment destination that includes the newly built Little Caesars Arena. The district planning and site design establishes the infrastructure for a range of events that will see the streets, plazas and open spaces fill with fans, festivals and entertainment. The complex site has heavy demands for site use as well as LEED goals. The Artline pavers used for the plaza spaces are manufactured with recycled aggregates, the use of pozzolans replacing a substantial portion of the Portland cement, in combination with being manufactured locally contributing towards Materials and Resources credits. This once vacant space is now transformed into walkable streets and open spaces that allow people from across the region to recreate, contemplate and celebrate.

UNILOCK CUSTOMIZATION

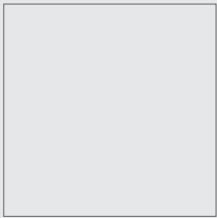
Unilock allows you to **customize products** to suit your project. Our **vast array** of sizes, edges, finish and color options make it easy to achieve your design vision. Choose your shape or your finish first and then narrow down your color range. Then call your Unilock Representative for all of the special order options available in your market.





CHOOSE YOUR SHAPE

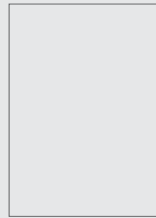
SLABS



23½ x 23½ x 2 (60 x 60cm)
T: 5cm



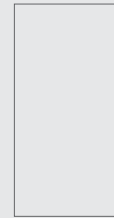
23½ x 23½" (60.6 x 60.6cm)
T: 5cm



17½ x 23½" (45.3 x 60.6cm)
T: 5cm

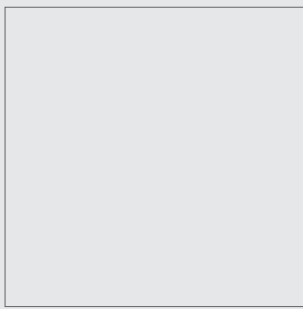


11½ x 23½" (30.1 x 60.6cm)
T: 5cm

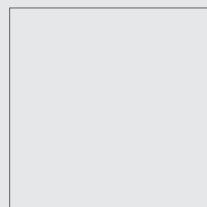


11½ x 23½ (30 x 60cm)
T: 5cm

SQUARES



36 x 36" (90 x 90cm)
T: 10cm



24 x 24" (60 x 60cm)
T: 5, 7 or 10cm



16 x 16" (40 x 40cm)
T: 7, 8 or 10cm



12 x 12" (30 x 30cm)
T: 7, 8 or 10cm



8 x 8" (20 x 20cm)
T: 7, 8 or 10cm

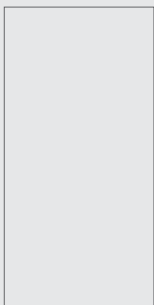


6 x 6" (15 x 15cm)
T: 7 or 8cm

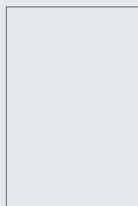


4 x 4" (10 x 10cm)
T: 7cm

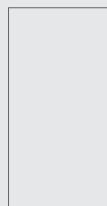
RECTANGLES



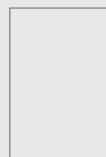
18 x 36" (45 x 90cm)
T: 10cm



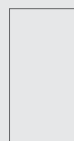
16 x 24" (40 x 60cm)
T: 10cm



12 x 24" (30 x 60cm)
T: 5, 7, 10 or 15cm



12 x 18" (30 x 45cm)
T: 10cm



8 x 16" (20 x 40cm)
T: 7 or 10cm



7 x 14" (18 x 36cm)
T: 6 or 8cm



6 x 12" (15 x 30cm)
T: 7, 8 or 10cm



5 x 10" (12 x 24cm)
T: 8cm



6 x 8" (15 x 20cm)
T: 7cm



4 x 8" (10 x 20cm)
T: 6, 7 or 8cm

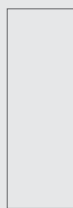


3 x 6" (7.5 x 15cm)
T: 10cm

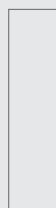
PLANKS



12 x 36" (30 x 90cm)
T: 10cm



8 x 24" (20 x 60cm)
T: 10 or 15cm



6 x 24" (15 x 60cm)
T: 7 or 15cm



4 x 16" (10 x 40cm)
T: 10cm



4 x 12" (10 x 30cm)
T: 7, 8 or 10cm



3 x 12" (7.5 x 30cm)
T: 10cm



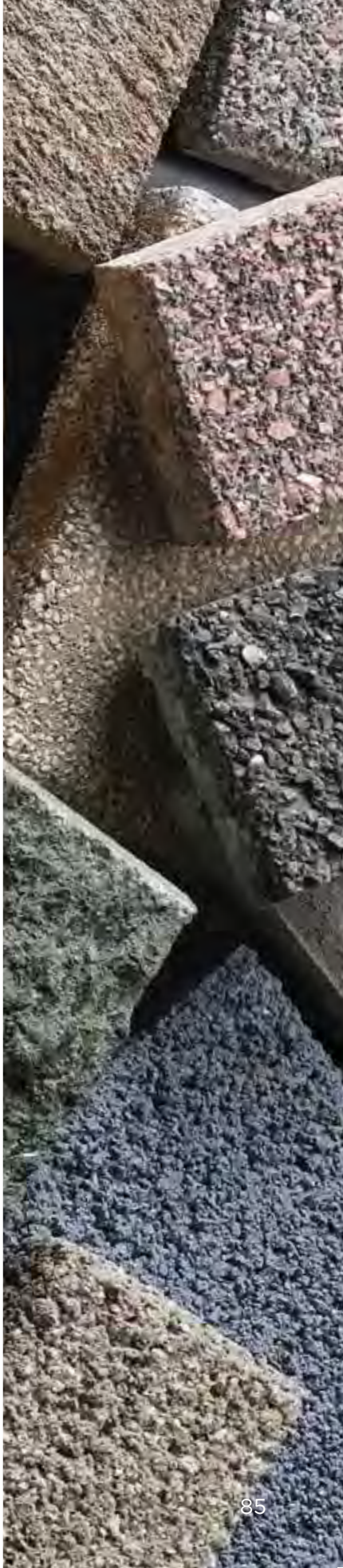
2¼ x 9½" (6 x 24cm)
T: 7cm

RANDOM BUNDLES		
Artline Platform 6" - 17" x 4" and 7" (17-45 x 12.5 and 18.75cm) T: 7cm or 10cm	Beacon Hill Platform 21 x 14, 14 x 14, 7 x 14" (54 x 36, 36 x 36, 18 x 36cm) T: 7 or 10cm	
Thornbury Platform 13" x 16", 13" x 8", 6" x 8" (35 x 42, 35 x 21, 17 x 21cm) T: 7 or 8cm	Tribeca Platform 5" x 12, 5" x 9, 5" x 7" (13 x 30.5, 13 x 23, 13 x 17.5cm) T: 6cm	Small Random Platform 6 x 8, 6 x 6, 4 x 6" (15 x 20, 15 x 15, 10 x 15cm) T: 7cm

GEOMETRICS			
8 x 8" (20 x 20cm) T: 7cm	10" x 10" (26 x 26cm) T: 8cm	6x12x16" (15x30x42.4cm) T: 7 or 8cm	8" x 5" (14.7 x 22.4cm) T: 8cm

PERMEABLE OPTIONS				
8 x 8" (20 x 20cm) T: 8cm	10" x 10" (26 x 26cm) T: 8cm	9" x 9" (25 x 25cm) T: 8cm	4 x 16" (10 x 40cm) T: 10cm	3 x 12" (7.5 x 30cm) T: 10cm
12 x 12" (30 x 30cm) T: 10cm	10 x 10" (24 x 24cm) T: 8cm	5 x 10" (12 x 24cm) T: 8cm	5 x 5" (12 x 12cm) T: 8cm	Eco-Line® Random Bundle 9" - 14" x 3 1/6" and 4" T:10cm

Not all shapes and sizes are available in all regions, or in all finish or edge options (not shown). Contact your Unilock Representative for more information. All measurements are nominal. T = height / thickness of the slab or paver



SELECT DESIRED FINISH

CALL YOUR UNILOCK REPRESENTATIVE.

Styling our products to your unique design ideas is what we do best. Call us early in the design process to ensure every detail is accurate, from shape and finish, to color and edge detail. Let's see what we can create together!

ENDURACOLOR™



UMBRIANO® Mottled Finish
with ColorFusion™ and EasyClean™



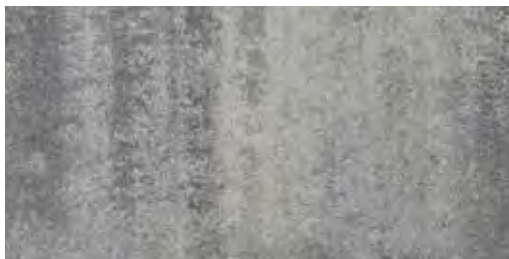
SENZO™ Matte Finish
with EasyClean™



SERIES™ Exposed Granite Finish



IL CAMPO® Brushed Finish

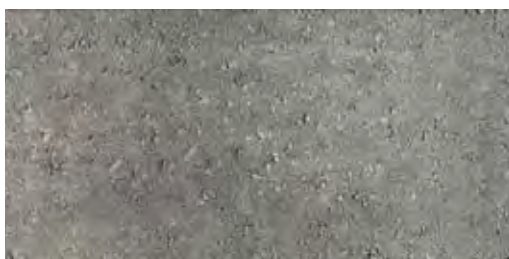


SMOOTH PREMIER Finish



FLAGSTONE PREMIER Finish

CLASSIC



STANDARD Finish

AND COLOR

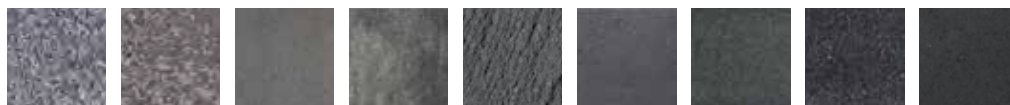
THIS PALETTE IS YOURS TO DISCOVER AND EXPAND



COOL GREY HUES



WARM GREY HUES



BLACK HUES



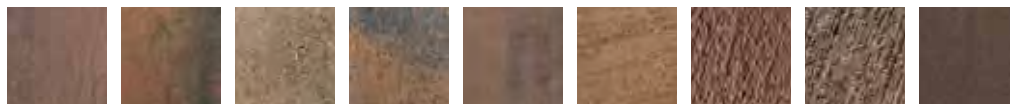
COOL COLOR HUES



WARM COLOR HUES



RED COLOR HUES



BROWN COLOR HUES

Minimum custom or special order production quantities apply. Extended lead times may apply. Contact your Unilock Representative to confirm all details before creating your specification.



APPLICATION BY SIZE, BY THICKNESS AND PRODUCT

	Product	Product Size	Thickness	Pedestrian	Commercial Pedestrian*	Light-Duty Vehicular	Commercial Vehicular	Heavy-Duty	Permeable
<p>The aspect ratio of the paver unit (length / height = aspect ratio) directly correlates to the recommended usage.</p> <p>A ratio of 3:1 or less is recommended for Commercial and Heavy-Duty Vehicular applications.</p> <p>4:1 for Residential and Light-Duty Vehicular applications.</p> <p>and over 5:1 for Pedestrian only.</p> <p>Reference the chart as a guideline and contact your Unilock Representative for more information.</p>		36 x 36	10 cm	✓					
		18 x 36	10 cm	✓					
		24 x 24	15 cm	✓	✓	✓			
		24 x 24	10 cm	✓	✓	✓			
		24 x 24	7 cm	✓					
		24 x 24	5 cm	✓					
		24 x 24	4.5 cm	✓					
		18 x 24	5 cm	✓					
		18 x 24	4.5 cm	✓					
		18 x 18	4.5 cm	✓					
		16 x 24	10 cm	✓	✓	✓**			
		12 x 24	15 cm	✓	✓	✓	✓		
		12 x 24	10 cm	✓	✓	✓**			
		12 x 24	7 cm	✓					
		12 x 24	5 cm	✓					
		12 x 24	4.5 cm	✓					
		12 x 18	10 cm	✓	✓	✓	✓	✓	
		8 x 24	15 cm	✓	✓	✓			
		8 x 24	10 cm	✓	✓	✓**			
		6 x 24	15 cm	✓	✓	✓	✓		
		6 x 24	7 cm	✓					
		16 x 16	10 cm	✓	✓	✓	✓	✓	
		16 x 16	8 cm	✓	✓	✓	✓		
		16 x 16	7 cm	✓	✓	✓	✓		
		8 x 16	10 cm	✓	✓	✓	✓	✓	
		8 x 16	7 cm	✓	✓	✓	✓		
		4 x 16	10 cm	✓	✓	✓	✓	✓	✓
		12 x 12	10 cm	✓	✓	✓	✓	✓	
		12 x 12	8 cm	✓	✓	✓	✓		
		12 x 12	7 cm	✓	✓	✓	✓		✓
		12 x 12	4.5 cm	✓					
		6 x 12	10 cm	✓	✓	✓	✓	✓	
		6 x 12	8 cm	✓	✓	✓	✓	✓	
		6 x 12	7 cm	✓	✓	✓	✓		
		10 x 10	8 cm	✓	✓	✓	✓	✓	✓
		5 x 10	8 cm	✓	✓	✓	✓	✓	✓
	8 x 8	7 cm	✓	✓	✓	✓	✓		
	6 x 8	7 cm	✓	✓	✓	✓	✓		
	4 x 12	10 cm	✓	✓	✓	✓	✓		
	4 x 12	8 cm	✓	✓	✓	✓			
	4 x 12	7 cm	✓	✓	✓	✓			
	3 x 12	10 cm	✓	✓	✓	✓	✓	✓	
	6 x 6	8 cm	✓	✓	✓	✓	✓		
	6 x 6	7 cm	✓	✓	✓	✓			
	5 x 5	8 cm	✓	✓	✓	✓		✓	
	4 x 8	8 cm	✓	✓	✓	✓	✓		
	4 x 8	7 cm	✓	✓	✓	✓			
	4 x 8	6 cm	✓	✓	✓	✓			
	4 x 4	7 cm	✓	✓	✓	✓			
	3 x 6	10 cm	✓	✓	✓	✓	✓		
	Anchorlock®		8 cm	✓	✓	✓	✓	✓	
	Artline™		7 cm	✓					
	Artline™		10 cm	✓	✓	✓			
	Beacon Hill™		8 cm	✓	✓	✓			
	Beacon Hill™		6 cm	✓					
	Bristol Valley™		6 cm	✓					
	Brussels Block ¹		7 cm	✓	✓	✓			
	Brussels Dimensional™ Paver		10 cm	✓	✓	✓	✓		
	City Park Paver™		7 cm	✓	✓	✓	✓		✓ (8cm)
	Copthorne ⁺		6 cm	✓	✓	✓	✓		
	Courtstone ⁺		6 cm	✓	✓	✓	✓		
	Dura-Mat™		10 cm	✓		✓			✓
	Eco-Line™		10 cm	✓	✓	✓	✓	✓	✓
	Eco-Optiloc™		8 cm	✓	✓	✓	✓	✓	✓
	Mattoni		7 cm	✓	✓	✓			
	Optiloc ⁺		8 cm	✓	✓	✓	✓	✓	
	Richcliff™		6 cm	✓	✓	✓	✓		
	Thornbury™		7 cm	✓	✓	✓			✓
	Town Hall™		7 cm	✓	✓	✓	✓		✓

All pavements require a site specific design.

A Herringbone laying pattern is essential for most vehicular trafficked pavements and becomes more critical as the demands on the pavements increase. Please contact your local Unilock Representative for specific design details. This chart is only a guideline.

* Subject to occasional light duty service vehicles

** installed on a concrete base

UNILOCK RETAINING WALLS

A great retaining wall should provide an **aesthetic that blends** subtly with the environment and **surrounding architecture**. Segmental retaining walls have been the choice of Landscape Architects, Designers and Engineers who are looking for classic, clean lines and timeless appeal.



Use U-Cara to build retaining walls, seat walls, pillars, planters, fire features, grill islands and more!

WALL AND STEPS
Cream Smooth Premier panels and
Buff Universal Coping

FIRE FEATURE
Granite Fusion pitched with
Grey Universal Coping



U-CARA®

The U-Cara Multi-Face Wall System represents a revolution in wall design.

This patented system, exclusive to Unilock, is comprised of two basic components:

- | Sure Track™ backer blocks provide dimensionally accurate structure
- | U-Cara fascia panels provide unlimited design options

1 Choose your Block



FOR LOW WALLS

SURE TRACK*
STANDARD BACKER
5⁷/₈ x 7⁷/₈ x 5⁷/₈"
(15 x 20 x 15cm)



FOR HIGH WALLS

SURE TRACK*
LARGE BACKER
5⁷/₈ x 6⁷/₈ x 11³/₄"
(15 x 17.5 x 30cm)

2 Select your Fascia style



FASCIA PANEL*
5⁷/₈ x 18³/₈ x 2³/₈"
(15 x 46.6 x 6cm)

Closed End Panels for Corners

CORNER BUNDLE (units sold together)



STANDARD FASCIA HALF PANEL*
5⁷/₈ x 9³/₁₆ x 2³/₈"
(15 x 23.3 x 6cm)



CLOSED-END FASCIA PANEL*
5⁷/₈ x 20⁷/₈ x 2³/₈"
(15 x 53 x 6cm)

Coping and Base Units



UNIVERSAL COPING*
19 x 14 x 2³/₄"
(48.2 x 35.5 x 7 cm)



UNIVERSAL BASE UNIT*
19 x 14 x 2"
(48.2 x 35.5 x 5.5 cm)

U-CARA® Exclusively from Unilock
US Patent: 9,453,341 International Patents Pending

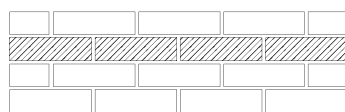
* Available for quick ship across North America.



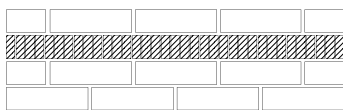
U-Cara Fascia panels can be placed anywhere on the Sure Track™ Backer Block, allowing for a variety of patterns, color and texture combinations not possible with other systems.



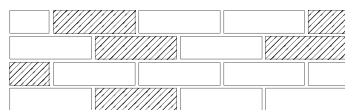
1/2 Running Bond



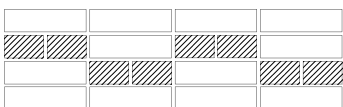
1/2 Running Bond with Linear Accents



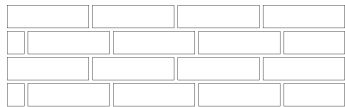
1/2 Running Bond with Paver Accents



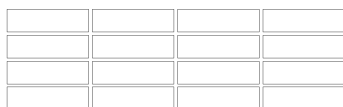
1/2 Running Bond with Random Accents



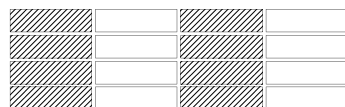
Mixed Bond



1/3 Running Bond



Stacked Bond



Stacked Bond with Accents



LOOK INSIDE!

U-Cara fascia panels hang easily on the patented **Sure Track** backer block.

UMBRIANO® FINISH



FRENCH GREY *



WINTER MARVEL *



MIDNIGHT SKY



SUMMER WHEAT *



HARVEST BROWN

SERIES™ FACE



BLACK GRANITE



PEPPERED GRANITE

PITCHED FACE



ALMOND GROVE FUSION



BAVARIAN



GRANITE FUSION*



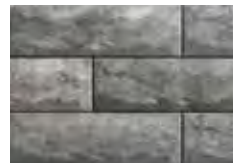
OPAL BLEND



RIVER



SIERRA



STEEL GREY



STEEL MOUNTAIN

SMOOTH PREMIER FACE



ALMOND GROVE FUSION



BAVARIAN



CREAM



GRANITE FUSION *



GRAPHITE



OPAL BLEND



SIERRA



TUSCANY*

TECHNICAL ADVANTAGES

ENDURACOLOR™

Refined surface and long-lasting color

EASYSOFT™ STAIN RESISTANCE - CF 90

Factory sealed to provide integral surface protection from stains

COLORFUSION™ TECHNOLOGY

Subtly mottled color finish

TECHNICAL ADVANTAGES

ENDURACOLOR™

Refined surface and long-lasting color

Granite, Quartz and Marble surface materials.

TECHNICAL ADVANTAGES

ENDURACOLOR™

Refined surface and long-lasting color

TECHNICAL ADVANTAGES

ENDURACOLOR™

Refined surface and long-lasting color

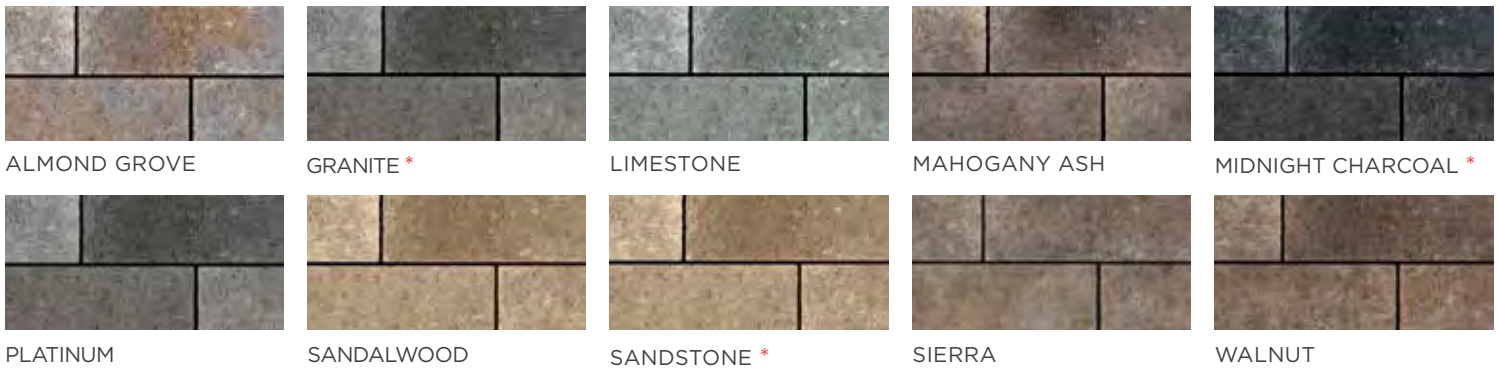
LINEO™ DIMENSIONAL STONE

Contemporary and sleek lines define Lineo Dimensional Stone with a linear multi-length plank look. Ideal for garden walls, pillars and other outdoor vertical elements, Lineo Dimensional Stone offers up modern design and exceptional flexibility.



69

COLORS (Consult your regional Product Data Resource Guide to find locally stocked colors)



* Available for quick ship across North America.

RIVERCREST® WALL



With the award-winning Rivercrest Wall system, you get the character and flexibility of natural stone with the durability, affordability and ease of installation of manufactured concrete. The unique engineered S-shape and patent pending-design creates vertical and lateral interlock for added strength, making it ideal for retaining walls up to 1.8m (6.0') when combined with geogrid reinforcement.



TECHNICAL ADVANTAGES

REALA™ TECHNOLOGY

Cast from historic brick, cobble and stone

COLORS (Consult your regional Product Data Resource Guide to find locally stocked colors)



BUFF *



COASTAL SLATE *

RANDOM (all units sold together) *



STANDARD UNIT 1
8 x 9-10 x 2¼"
(20 x 23-25 x 5.7cm)



STANDARD UNIT 2
12 x 9-10 x 2¼"
(31 x 23-25 x 5.7cm)



STANDARD UNIT 3
12 x 9-10 x 2¼"
(31 x 23-25 x 5.7cm)



STANDARD UNIT 4
17 x 9-10 x 2¼"
(42.5 x 23-25 x 5.7cm)



LONG CORNER UNIT
12 x 9-10 x 2¼"
(31 x 23-25 x 5.7cm)



SHORT CORNER UNIT
10 x 9-10 x 2¼"
(25 x 23-25 x 5.7cm)

CORNER BUNDLE (units sold together) *



JUMPER UNIT 1
8 x 9-10 x 4½"
(20 x 23-25 x 11.4cm)



JUMPER UNIT 2
12 x 9-10 x 4½"
(31 x 23-25 x 11.4cm)



JUMPER UNIT 3
12 x 9-10 x 4½"
(31 x 23-25 x 11.4cm)



STANDARD UNIT 4
17 x 9-10 x 4½"
(42.5 x 23-25 x 11.4cm)



JUMPER CORNER UNIT *
12 x 9-10 x 4½"
(31 x 23-25 x 11.4cm)

PILLAR UNIT *
AVAILABLE

* Available for quick ship across North America.

PISA 2®/CONCORD WALL™

The built in setback design of Pisa2/Concord Wall automatically forms the correct slope for retaining walls. Utilizing the tapered components, you can form curved or straight walls and steps. For faster construction and a more linear look, XL units are also available, double the length of the standard unit. Gravity walls up to 3.5 ft (1m) and grid reinforced walls up to 25 ft (7.5m) high under typical conditions.



71

COLORS (Consult your regional Product Data Resource Guide to find locally stocked colors)



ALMOND GROVE

BEECHWOOD

CHARCOAL

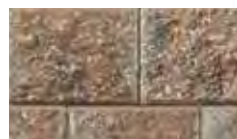
GRANITE *

MAHOGANY ASH

NATURAL



NEVADA *



RIVER



RUSTIC RED



SANDSTONE



SIERRA *



ST CLAIR



STANDARD
8 x 6 x 12"
(20 x 15 x 30cm)



TAPERED *
8 x 6 x 12"
(20 x 15 x 30cm)



CORNER *
12 x 6 x 8"
(30 x 15 x 20cm)



PISA COPING
12 x 3 x 12"
(30 x 7.5 x 30cm)



XL UNIT
16 x 6 x 12"
(40 x 15 x 30cm)

* Available for quick ship across North America.

ROMAN PISA® / ROMAN WALL®

The antiqued, split face of Roman Wall makes it a more rugged-looking alternative to Concord Wall/Pisa2. The built in setback design automatically forms the correct slope for retaining walls, and tapered units make it simple to build in straight or curved applications. Gravity walls up to 3.5 ft (1m) and grid reinforced walls up to 25 ft (7.5m) high under typical conditions.



COLORS (Consult your regional Product Data Resource Guide to find locally stocked colors. Not available in all markets)



ALMOND GROVE



BEECHWOOD



GRANITE



RIVER



SIERRA



STANDARD
8 x 6 x 12"
(20 x 15 x 30cm)



TAPERED
8 x 6 x 12"
(20 x 15 x 30cm)



CORNER
12 x 6 x 8"
(30 x 15 x 20cm)



ROMAN COPING
12 x 3 x 12"
(30 x 7.5 x 30cm)

SIENA STONE®

Bold and dramatic, this large scale wall block (smallest unit weighs 380lbs each) strikes an impressive profile when used for a heavy-duty retaining wall or as treads in large outdoor staircases. The long lines and split face of SienaStone makes it an attractive alternative to more utilitarian-looking wall blocks. Gravity walls up to 10 ft (3m) or grid reinforced up to 40 ft (12m) under typical conditions.



COLORS (Consult your regional Product Data Resource Guide for measurements and locally stocked colors)



NATURAL



BROWN**



GRANITE**



MAHOGANY ASH**



NEVADA**



SIERRA**

PRODUCT SPECIFICATIONS



STANDARD 333



STANDARD 500



STANDARD 925



COPING

SIENA STONE® SMOOTH

WALL



GRANITE



STANDARD / COPING /
CORNER 375

STEPS



TAN



LIGHT GREY



MIDNIGHT
CHARCOAL

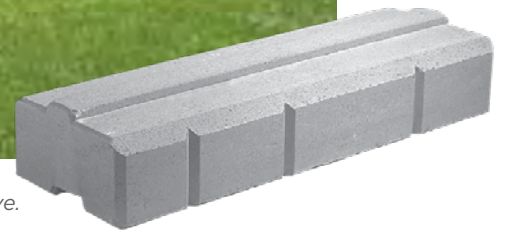


48" & 72" STEP

Refer to Product Data Resource Guide for unit measurements. SienaStone also available in: Corner 90 Right & Left, Corner 45 Right & Left, Closed-End Coping. For detailed product information and local color availability contact your Unilock Representative. ** Available only in Closed-End Coping in most markets.

DURAHOLD®

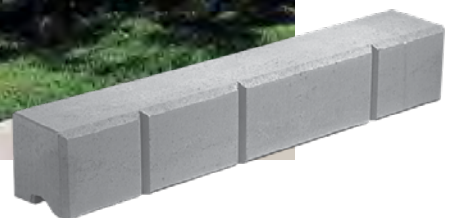
A great alternative to “poured-in-place” concrete. The large size of DuraHold (1680lbs./762kg.) makes it an appropriate choice for demanding structures up to 40ft. (12.2m). Proper engineering and a good selection of components make this an exceptional wall system for gravity, tie-back or grid-reinforced walls. Gravity walls up to 6 ft (1.8 m) in typical conditions.



For detailed product information and local color availability contact your Unilock Representative.

DURAHOLD2®

DuraHold2 is similar to DuraHold in appearance, but is almost half the size, (820lbs./363kg.), making it economical in terms of material cost, speed and efficiency for lower retaining walls. Concrete tiebacks or Geogrid reinforcement expands the various engineering options, allowing for structures up to 25 ft. (7.62m) high. Gravity walls up to 4 ft (1.2 m) in typical conditions.

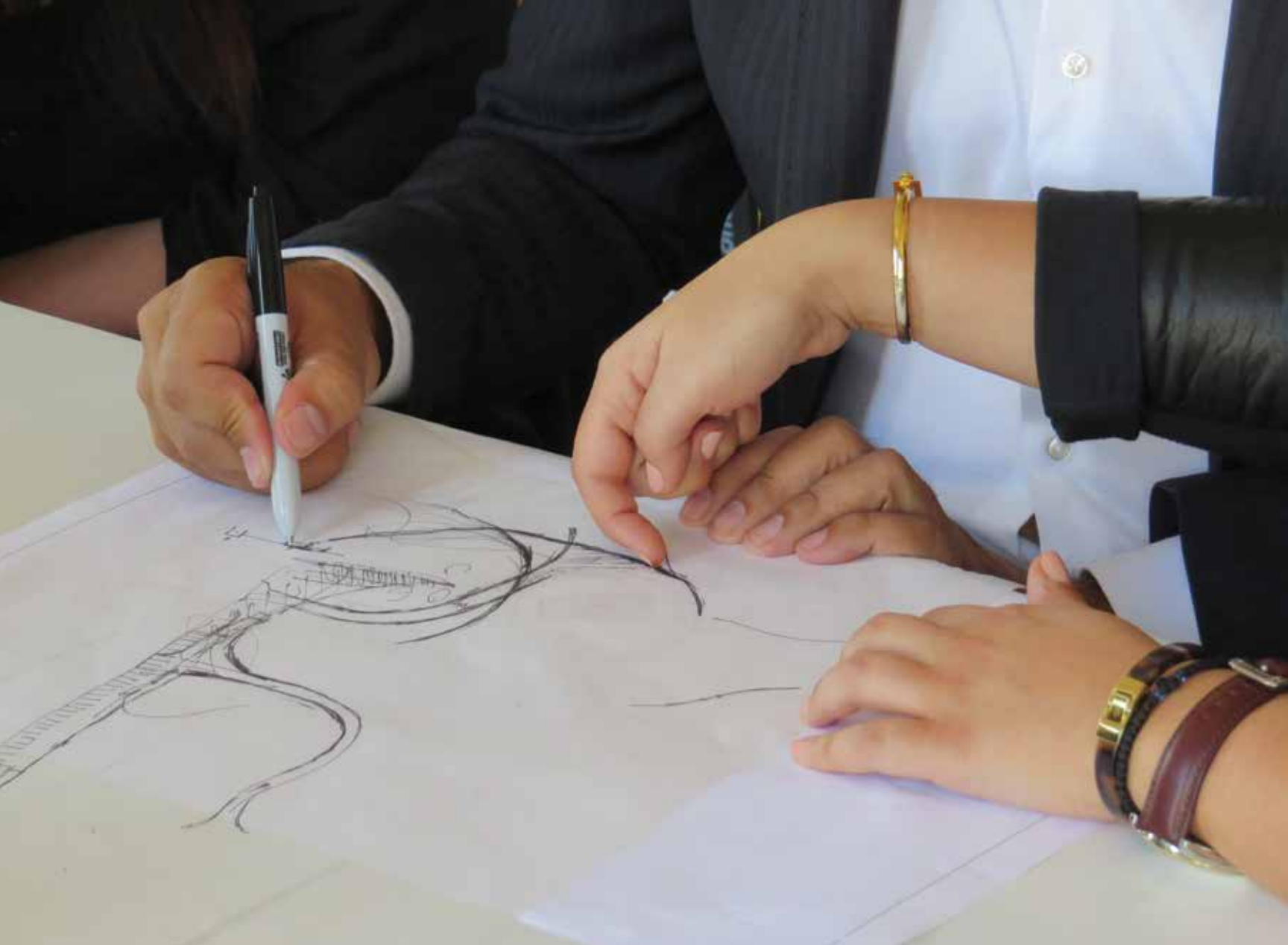


For detailed product information and local color availability contact your Unilock Representative.

PHOTO INDEX

#	Project Name	City	State	Finish - Product Shape	Project Size	Designer	Page
1	Vineyard Worship Center	Columbus	OH	Umbriano® - Rectangle/Square	10,000	Vineyard Columbus / Reichle Brothers	4
2	Corporate Campus	Schaumburg	IL	Series™ - Rectangle/Square	23,000	Goettsch Partners/Hoerr Schaudt Landscape Architects	5
3	The National Comedy Center	Jamestown	NY	Series™/ Il Campo®/Town Hall®	11,000	Clark, Patterson and Lee Architects	5
4	New Trier High School	Winnetka	IL	Smooth Premier - Plank/Rectangle	30,000	Wight & Company	6
5	University of Pittsburgh	Pittsburgh	PA	Smooth Premier - Plank/Artline	9,230	La Quatra Bonci	7
6	William M. Meredith School	Philadelphia	PA	Town Hall®	1,100	Stantec Philadelphia	7
7	Linear Park, Assembly Row	Somerville	MA	Senzo® - Rectangle	3,000	Copley Wolff Design Group	8
8	Suburban Square	Ardmore	PA	Umbriano® - Rectangle /Plank	16,000	Mahan Rykiel Associates	9
9	Bow Market	Somerville	MA	Smooth Premier - Permeable Eco-Priora™ Rectangle	7,000	Merritt Chase	9
10	Bishops Bay Country Club	Middleton	WI	Smooth Premier - Thornbury™ Permeable and Town Hall	2,000	Olsen Toon	10
11	Residence Inn by Marriott	Columbus	OH	Umbriano® - Rectangles	4,000	Timberwood Landscape	11
12	Valley Lo Country Club	Glenview	IL	Smooth Premier - Permeable Eco-Priora™ Rectangle	9,250	BSB Design	11
13	Wauwatosa Streetscape	Wauwatosa	WI	Series™ - Plank	25,000	Saiki Design	12
14	Downtown Streetscape	Belleville	ON	Series™ - Rectangle	120,000	Brown + Storey Architects Inc.	13
15	Wharf District	Washington	DC	Umbriano® - Plank	20,000	Michael Vargason LA	13
16	Little Caesars Arena	Detroit	MI	Series™ - Artline / Town Hall®/ Umbriano®	76,000	SmithGroup Ann Arbor	14
17	Veterans Square & Cenotaph	Markham	ON	Smooth Premier - Plank	5,000	Vertechs Design Inc.	15
18	Humber Bay Shores Park Palace Pier Node	Toronto	ON	Series™ - Square	6,000	LEES+ Associates	15
19	Glassboro Town Square	Glassboro	NJ	Smooth Premier/Umbriano® - Permeable Plank	19,000	Clarke Caton Hintz	16
20	Southwest Block 12 Park	Hoboken	NJ	Series™ - Permeable Plank	16,000	Starr Whitehouse	17
21	DPD Resilient Corridors Site 7	Chicago	IL	Umbriano® - Permeable Hex	3,300	AECOM / Hey & Associates, Inc	17
22	Laguna Apartments	Jersey City	NJ	Copthorne® / Courtstone®	6,500	Persistent Contracting	18
23	Soho Lofts	Jersey City	NJ	Smooth Premier - Permeable Eco-Priora™ Rectangle	10,000	Urban Architecture	19
24	Sixth Street Mews	Columbus	OH	Copthorne® / Courtstone®	6,000	Edward Cos	19
25	One East Delaware	Chicago	IL	Arcana	3,700	Pappageorge Haymes Partners	20
26	99 Tremont @ Oak	Brighton	MA	Smooth Premier - Skyline™	3,500	Radner Design Associates, Inc.	21
27	Lothrop Hall, University of Pittsburgh	Pittsburgh	PA	Smooth Premier - Plank/Artline™ Platform	1,250	Pasheck + MTR	21
28	Westmont Alleyways	Westmont	IL	Town Hall®	16,000	Village of Westmont / Thomas Engineering	22
29	Bentley University Arena	Waltham	MA	Smooth Premier - Permeable Eco-Line®	4,700	Pate Landscape Architecture Inc.	23
30	Holy Trinity School	Richmond Hill	ON	Smooth Premier - Permeable Plank/ Eco-Line®	24,000	MHBC Planning Urban Design and Landscape Architecture	23
31	Athletic & Recreation Center	Woodridge	IL	Standard - Permeable Eco-Optiloc™	100,000	Williams Architects	24
32	Jay Stream Middle School	Carol Stream	IL	Standard - Optiloc®	88,000	ARCON Associates, Inc.	25
33	Park Place	Geneva	IL	Smooth Premier - Permeable Eco-Priora™ Rectangle	19,000	CEMCON, Ltd.	25
34	Second Street	Geneva	IL	Pitched Face - U-Cara® Wall	350	owner	26
35	Victor Crossing	Victor	NY	SonomaStone®	40,000	EDR	27
36	Rosina Foods	Buffalo	NY	Rivercrest Wall®	300	Stedmans	27
37	Voke Lofts	Worcester	MA	Copthorne®	6,000	AT Leonard Associates	32
38	The Church of Our Savior	Rye	NY	Richcliff® / Copthorne®	3,000	Lothrop Associates	34

#	Project Name	City	State	Finish - Product Shape	Project Size	Designer	Page
39	Fleet Avenue	Cleveland	OH	Courtstone® / Copthorne®	30,000	AECOM	35
40	Rowan College at Burlington County	Mount Laurel	NJ	Umbriano®	45,000	Sikora Wells Appel	39
41	191 Spring Street	Lexington	MA	Series™ - Square	11,000	Lemon Brooke	41
42	University of Illinois at Chicago Pavillion	Chicago	IL	Senzo™	2,000	Campus Design	42
43	Lofts on Monroe	Grand Rapids	MI	Il Campo® - Square/Rectangle	1,200	Integrated Architecture	43
44	Franciscan University - Egan Hall	Steubenville	OH	Flagstone Premier - Beacon Hill	13,485	Maclachlan Cornelius & Filoni	44
45	Williams International	Pontiac	MI	Smooth Premier - Beacon Hill	14,000	Harley Ellis Devereaux	45
46	Centro Square	Vaughan	ON	Standard - Square/Rectangle/Plank	20,000	Land Art Design	46
47	Fuse Cambridge	Cambridge	MA	Skyline™ - Smooth Premier finish	2,500	Halvorson Design Partnership, Inc.	50
48	Lake and Aberdeen Condo	Chicago	IL	Arcana	9,000	Hitchcock Design Group	51
49	Holland Energy Park	Holland	MI	Il Campo® - Artline™ Platform	6,500	Progressive AE	59
50	Hutchinson Metro Center	Bronx	NY	Umbriano® - Beacon Hill®	8,000	owner	61
51	Liberty Village	Toronto	ON	Flagstone Premier - Thornbury®	2,000	PMA Landscape Architects	62
52	McMaster University	Hamilton	ON	Il Campo® - Small Random	40,000	Marshall Macklin Monaghan	63
53	Academic Campus	Amherst	MA	Umbriano® - Hex	17,000	Michael Van Valkenburgh Associates	64
54	E.L Harvey & Sons	Westborough	MA	Optiloc®	12,000	Hayden Site & Utility, Inc.	65
55	Heinz Lofts	Pittsburgh	PA	Town Hall®	600	Kimicata Brothers	67
56	Plaza de las Americas	Manhattan	NY	Smooth Premier/Senzo™ - Permeable Eco-Priora™ Square	30,000	RBA Group / HOK Architects	68
57	Darien Park District Community Center	Darien	IL	Smooth Premier - Permeable Eco-Priora™ Rectangle	33,500	Wight & Company	69
58	Fulton Pocket Park	Chicago	IL	Smooth Premier - Permeable Plank	7,200	site site design group ltd.	70
59	Francis Street Parking Lot	Providence	RI	Tribeca Cobble™	150	Hali Beckman	71
60	3rd Street	Bloomington	IL	Flagstone Premier - Thornbury®	3,700	Christopher B. Burke Engineering, Ltd.	72
61	American Academy of Pediatrics	Itasca	IL	Smooth Premier - Eco-Line®	7,500	Daniel Weinbach & Partners, Ltd.	73
62	Old Town Park Condo	Chicago	IL	Series™ - Permeable Hex	9,800	Hitchcock Design Group	74
63	180 York Street	Eden Mills	ON	Dura-Flow™	1,000	R. J. Burnside & Associates Limited	75
64	Woodfield Mall	Schaumburg	IL	Eco-Optiloc®	2,000	owner	76
65	Mistwood Golf Club	Romeoville	IL	Brussels Block®/Town Hall®	13,000	James and Todd Mcwethy	78
66	Ron Joyce Children's Health Center	Hamilton	ON	Bronte™ Street Pavers	30,000	Vertech Design Landscape Architects	79
67	Kenwood Country Club	Cincinnati	OH	Smooth Premier - U-Cara® Wall	800	McGill Smith Punshon Design	90
68	Lotus Condominium	Toronto	ON	Umbriano® - U-Cara® Wall	1,100	Terraplan Landscape Architects	92
69	The Huntington	Burlington	MA	Lineo Dimensional Stone / LedgeStone Coping	2,000	BSC Group	94
70	Niagara Falls Country Club	Lewiston	NY	Rivercrest® Wall / Richicliff® /Town Hall	5,000	Villani Landscape	95
71	Brown Stone House Condominium	Middleton	WI	Pisa 2' / Concord Wall™	2,000	Risi Stone Engineering	96
72	Private Residence	Foxboro	MA	RomanWall® / RomanPisa®	2,800	Curbs, Inc	97
73	Seneca Casino & Resort	Niagara Falls	NY	SienaStone®	2,500	Risi Stone Engineering	98
74	Cobble Hotel & Suites	Erie	PA	DuraHold™	4,100	Risi Stone Engineering	99
75	Charles H. Wright Museum of African American History	Detroit	MI	DuraHold2™	1,000	owner	99



UNILOCK PROJECT SUPPORT

Take advantage of our years of industry-leading expertise and unparalleled personal attention and collaboration, to ensure every intricate detail of your project runs smoothly. Our level of support is tailored to meet your needs, including:

- | Product customization
- | Budget pricing
- | Providing specifications, cross sections and details
- | Lunch and Learn continuing education credits
- | Samples
- | Outdoor Idea Centers



CUSTOM OPTIONS

Every project is unique. We have the expertise, technology and capabilities to create just what you need. Talk to your local representative about combining the many shapes, finishes and colors offered by Unilock to create the ideal product for your project.

UVISION® AND SAMPLES

Choosing the perfect product has never been easier. Our Uvision design software conveys your design in a rendering to aid your client with visualization. And when the time comes to finalize your product selection, your Unilock Representative will bring you all the real life samples you need.

OUTDOOR IDEA CENTERS

Unilock's Outdoor Idea Centers provide you with the perfect places for inspiration and great destinations for client feedback. When you visit be sure to see, touch and experience all that Unilock has to offer and ask our knowledgeable team any questions you have.

LUNCH AND LEARN

At Unilock, there is always something new. Ask your Unilock Representative about a Lunch and Learn session that also earns you valuable continuing education credits.

We're here to help through every step of your project. Talk to your Unilock Representative today to get all the details.

INDEX



Academic and Healthcare	6
Application Chart	88
Arcana	51
Architectural Finishes	37
Architectural Sizes	48
Artline™ Platform.....	58
Beacon Hill Platform.....	60
Bronte™ Street Paver.....	79
Brussels Block®	78
Color Options.....	87
Commercial Retail	8
Concord Wall™	92
Copthorne®	32
Courtstone®	35
Customization	82
Dura-Flow™	75
DuraHold®	99
DuraHold2®	99
Eco-Line™	73
Eco-Optiloc™	76
Elegance Collection.....	31
EnduraColor™.....	29
Finish Options.....	36
Flagstone Premier	44
Geometrics.....	64
Geometric Permeable.....	74
Golf Courses and Resorts.....	10
Heavy Duty and Parking Lots	24
Hex	64
Hex Permeable	74
Il Campo®.....	43
LEED.....	80
Lineo™ Dimensional Stone.....	94
Multi-Family Housing	18
Offices.....	4
Optiloc®	65
Parks and Recreation	14
Permeable	22
Permeable Collection.....	66
Photo Index.....	100
Pisa2®	96
Project Support.....	102
Planks.....	56
Planks Permeable	70
Random Bundles.....	58
Random Bundles Permeable	71
Rectangles	54
Rectangles Permeable.....	69
Recycled Content	81
Retaining Walls.....	89
Richcliff®	34
Rivercrest® Wall	95
Roof Decks.....	20
RomanPisa®	97
RomanWall®.....	97
Segmental Retaining Walls.....	26
Senzo™	42
Series™	40
SienaStone®	98
SienaStone® Smooth	98
Size Collections.....	47
Skyline™	50
Slab Collection	50
Small Random Platform	63
Smooth Premier	45
Squares.....	52
Squares Permeable.....	68
Standalone Products.....	77
Standard	46
Streetscapes.....	12
Thornbury™ Platform	62
Thornbury™ Platform Permeable.....	72
Town Hall®	33
Town Hall® Permeable.....	67
Tribeca Cobble™ Permeable	71
U-Cara® Multi-Face Wall	90
Umbriano®	38
Unilock Technologies	28
Urban Plazas	16



PROJECT: The Post at 200 Smith. Waltham, MA
DESIGN: Paul Finger Associates
PRODUCT: 12 x 24" and 6 x 24" with Umbriano®
finish in French Grey, Grenada White, Winter Marvel
and Smooth Premier finish in Sycamore

